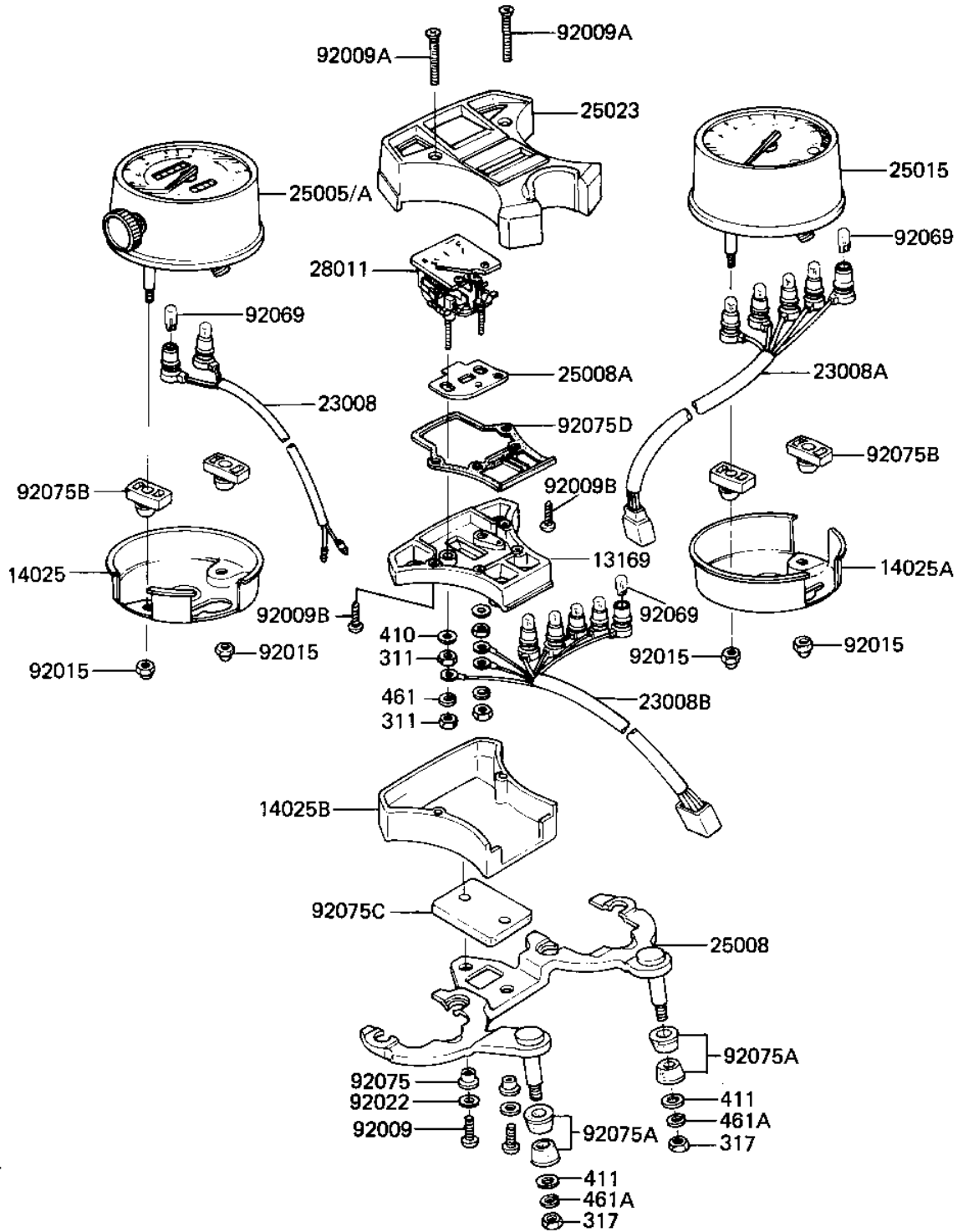


# 1981 GPz PARTS DIAGRAM

METERS

F2530-0052



# 1981 GPz PARTS LIST

## METERS

ITEM NAME	PART NUMBER	QUANTITY
PLATE,SOCKET (Ref # 13169)	13169-1426	1
COVER,SPEEDOMETER (Ref # 14025)	14025-1068	1
COVER,TACHOMETER (Ref # 14025A)	14025-1069	1
COVER,PILOT BOX,LOWER (Ref # 14025B)	14025-1368	1
SOCKET-ASSY,SPEEDOMET (Ref # 23008)	23008-1100	1
SOCKET-ASSY,TACHOMETE (Ref # 23008A)	23008-1101	1
SOCKET-ASSY,PILOT BOX (Ref # 23008B)	23008-1102	1
SPEEDOMETER,MPH (Ref # 25005)	25005-1117	1
BRACKET-METER (Ref # 25008)	25008-1038	1
BRACKET-METER,FUEL (Ref # 25008A)	25008-1039	1
TACHOMETER,(X1000RPM) (Ref # 25015)	25015-1066	1
COVER-METER CASE (Ref # 25023)	25023-1027	1
METER,FUEL (Ref # 28011)	28011-1024	1
SCREW,TAPPING,4X10 (Ref # 92009)	92009-1040	2
SCREW,COUNTERSNK,4X40 (Ref # 92009A)	92009-1092	2
SCREW,TAPPING,3.5X20 (Ref # 92009B)	92009-1121	2
NUT-CAP,5MM (Ref # 92015)	322C0500	4
WASHER,5.2X16X16X1.2T (Ref # 92022)	25009-004	2
BULB,12V3.4W (Ref # 92069)	92069-1007	12
DAMPER RUBBER,MET FIT (Ref # 92075)	25019-023	2
DAMPER RUBBER (Ref # 92075A)	92075-080	4
SHOCK DAMPER,METER (Ref # 92075B)	92075-1101	4
DAMPER,PILOT BOX,LOW (Ref # 92075C)	92075-1332	1
DAMPER,PILOT BOX (Ref # 92075D)	92075-1333	1
NUT,4MM (Ref # 311)	311B0400	4
NUT,8M/M (Ref # 317)	317B0800	2
WASHER PLAIN 4MM (Ref # 410)	410B0400	2
WASHER PLAIN 8MM (Ref # 411)	411B0800	2
WASHER SPRING 4MM (Ref # 461)	461F0400	2

# 1981 GPz PARTS LIST

METERS

ITEM NAME	PART NUMBER	QUANTITY
WASHER SPRING 8MM (Ref # 461A)	461F0800	2