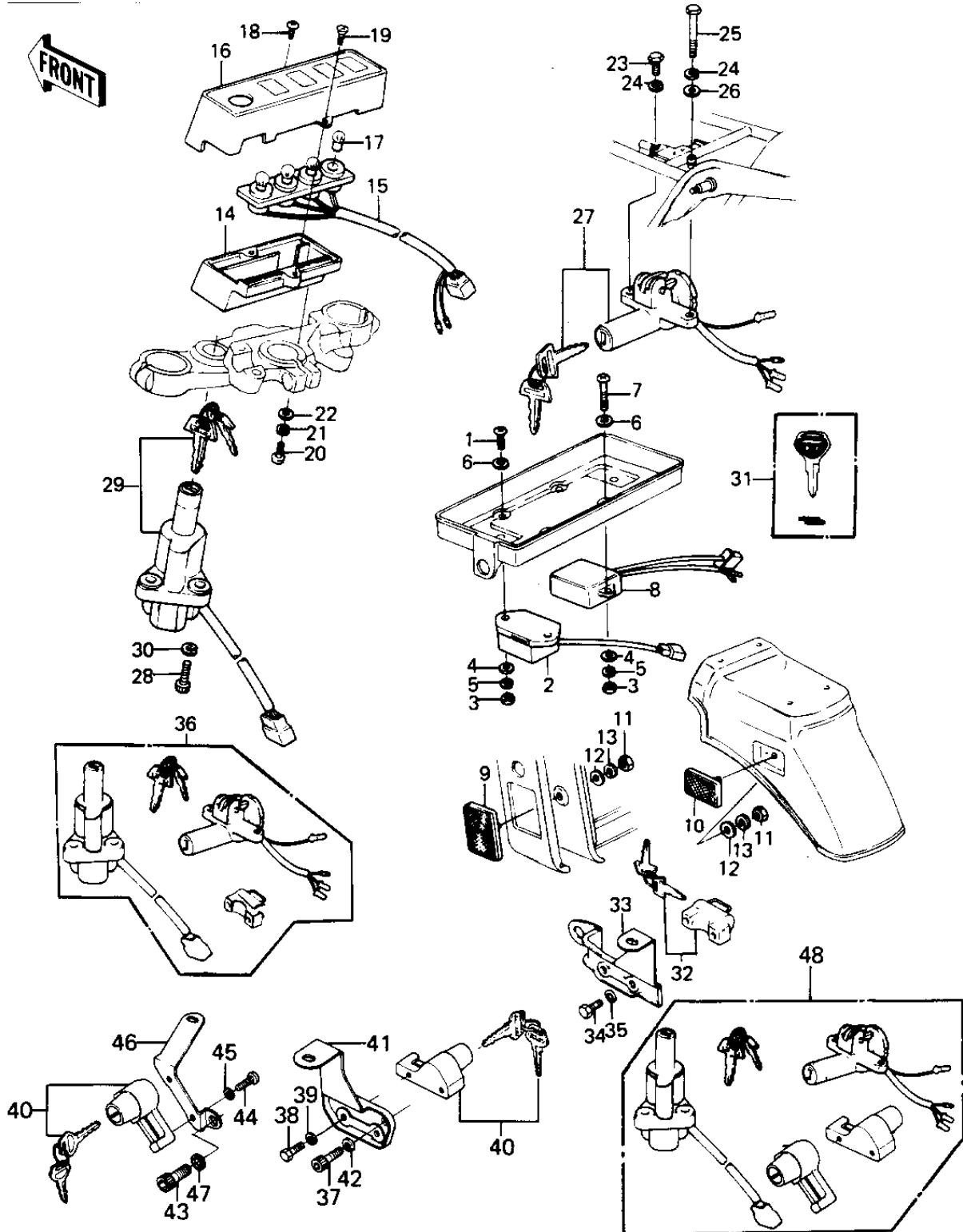


1980 KZ1300-A2 PARTS DIAGRAM

IGNITION SWITCH/LOCKS/REFLECTORS



1980 KZ1300-A2 PARTS LIST

IGNITION SWITCH/LOCKS/REFLECTORS

| ITEM NAME | PART NUMBER | QUANTITY |
|------------------------------------|-------------|----------|
| SCREW PAN HEAD 6X20 (Ref # 1) | 220B0620 | 1 |
| SWITCH,RESERVE LIGHTI (Ref # 2) | 27010-1024 | 1 |
| NUT 6MM (Ref # 3) | 311B0600 | 1 |
| NUT,LOCK 6MM (Ref # 3) | 92017-014 | 1 |
| WASHER PLAIN 6MM (Ref # 4) | 410B0600 | 1 |
| WASHER SPRING 6MM (Ref # 5) | 461F0600 | 4 |
| WASHER PLAIN (Ref # 6) | 92022-024 | 1 |
| SCREW PAN HEAD 6X35 (Ref # 7) | 220B0635 | 1 |
| SWITCH,TURN SIGNAL OP (Ref # 8) | 27010-1016 | 1 |
| REFLECTOR,REFLEX(FRON (Ref # 9) | 28012-1003 | 1 |
| REFLECTOR-REFLEX,RR (Ref # 10) | 28012-1054 | 1 |
| NUT,5MM (Ref # 11) | 311B0500 | 1 |
| WASHER PLAIN 5MM (Ref # 12) | 411B0500 | 2 |
| WASHER SPRING 5MM (Ref # 13) | 461F0500 | 5 |
| LAMP ASSY,PILOT (Ref # 14~19) | 23016-1014 | 1 |
| COVER,PILOT LAMP,LOWE (Ref # 14) | 14025-1117 | 1 |
| SOCKET ASSY,PILOT LAM (Ref # 15) | 23008-1041 | 1 |
| COVER,PILOT LAMP,UPPE (Ref # 16) | 25023-1014 | 1 |
| BULB 12V 3W (Ref # 17) | 92069-018 | 1 |
| SCREW,TAPPING,3.5X10 (Ref # 18) | 92009-1073 | 1 |
| SCREW,CNTSNK HED,4X10 (Ref # 19) | 92009-1074 | 1 |
| SCREW, PAN HEAD, 5 X 16 (Ref # 20) | 220B0516A | 1 |
| BOLT-UPSET,6X12 (Ref # 23) | 112G0612 | 1 |
| BOLT-UPSET (Ref # 25) | 112G0645 | 1 |
| WASHER PLAIN 6MM (Ref # 26) | 411B0600 | 1 |
| LOCK ASSY,SEAT (Ref # 27) | 27016-5027 | 1 |
| BOLT,SOCKET,8X22 (Ref # 28) | 120P0822 | 1 |
| IGNITION&STEERING ASY (Ref # 29) | 27016-5026 | 1 |
| WASHER SPRING 8MM (Ref # 30) | 461F0800 | 2 |

1980 KZ1300-A2 PARTS LIST

IGNITION SWITCH/LOCKS/REFLECTORS

| ITEM NAME | PART NUMBER | QUANTITY |
|---------------------------------|-------------|----------|
| KEY-LOCK,BLANK (Ref # 31) | 27008-1103 | 1 |
| LOCK ASSY,HELMET (Ref # 32) | 27016-5030 | 1 |
| BRACKET,HELMET LOCK (Ref # 33) | 32074-1009 | 1 |
| BOLT SMALL (Ref # 34) | 114G0812 | 1 |
| SWITCH-ASSY (Ref # 36) | 27004-5371 | 2 |
| BOLT-SOCKET (Ref # 37) | 120S0610 | 1 |
| BOLT HEX HEAD 5X10 (Ref # 38) | 110B0510 | 1 |
| LOCK ASSY,HELMET (Ref # 40) | 27016-5036 | 1 |
| BRACKET-LOCK,HLMT,RH (Ref # 41) | 32074-1021 | 1 |
| BOLT-SOCKET (Ref # 43) | 120S0814 | 1 |
| SCREW PAN HEAD 5X10 (Ref # 44) | 220B0510 | 1 |
| BRACKET-LOCK,HLMT,LH (Ref # 46) | 32074-1020 | 1 |