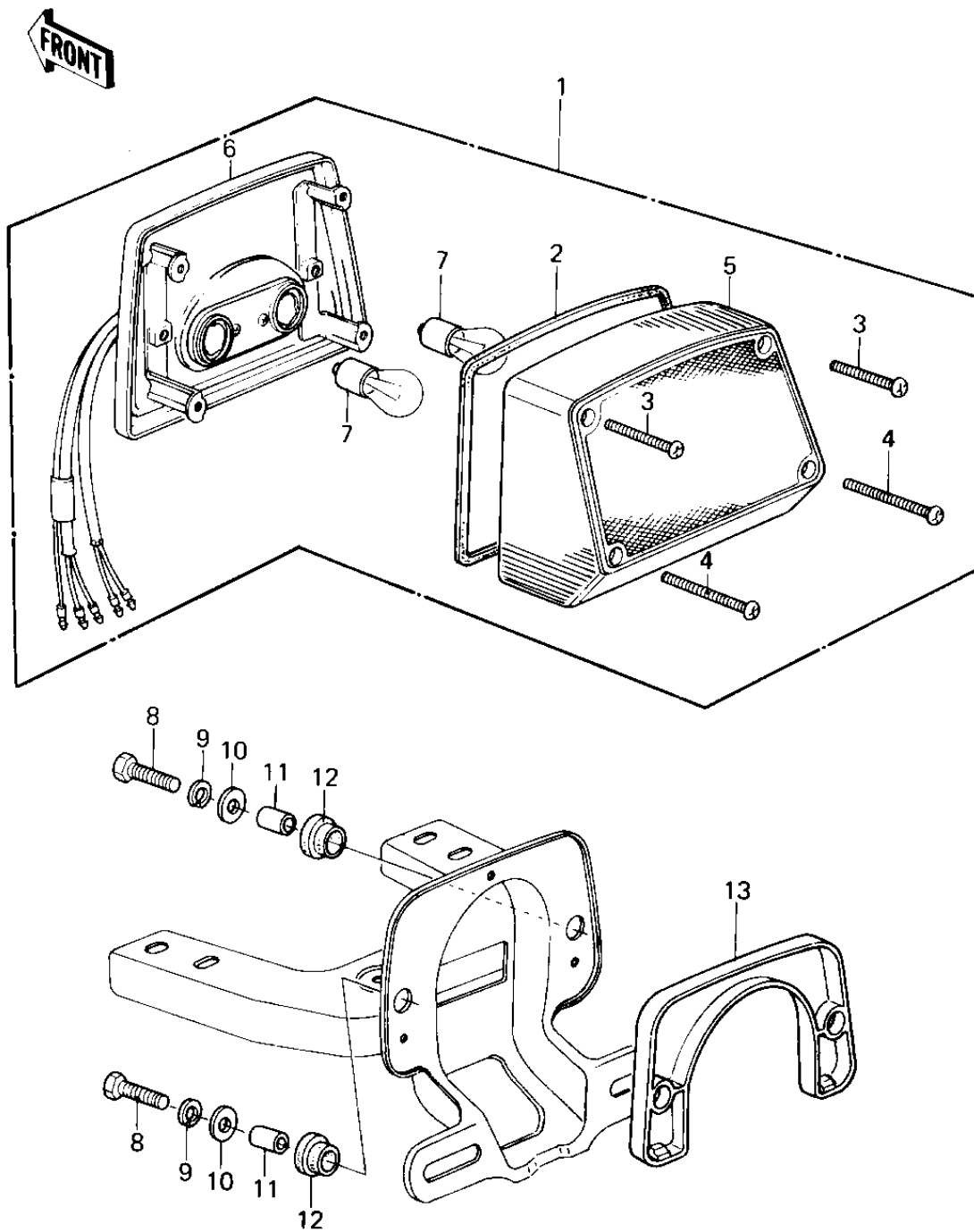


1980 KZ1300-A2 PARTS DIAGRAM

TAILLIGHT



1980 KZ1300-A2 PARTS LIST

TAILLIGHT

| ITEM NAME | PART NUMBER | QUANTITY |
|-----------------------------------|-------------|----------|
| LAMP ASSY, TAIL (Ref # 1) | 23025-1007 | 1 |
| GASKET, TAIL LAMP LENS (Ref # 2) | 11009-1098 | 2 |
| SCREW, PAN HEAD, 4X45 (Ref # 3) | 220E0445A | 1 |
| SCREW-PAN-CROS (Ref # 4) | 220R0460 | 1 |
| LENS, TAIL LAMP (Ref # 5) | 23026-1004 | 1 |
| BODY, TAIL LAMP (Ref # 6) | 23027-1003 | 1 |
| BULB, 12V 32/3CP (Ref # 7) | 92069-059 | 1 |
| BOLT-UPSET (Ref # 8) | 112G0625 | 1 |
| WASHER SPRING 6MM (Ref # 9) | 461F0600 | 1 |
| WASHER 6.5X20X1.6T (Ref # 10) | 92022-125 | 1 |
| COLLAR 6.8X10X14.5 (Ref # 11) | 92027-156 | 1 |
| DAMPER RUBBER (Ref # 12) | 92075-1092 | 1 |
| DAMPER RUBBER, TAIL LP (Ref # 13) | 92075-1111 | 1 |