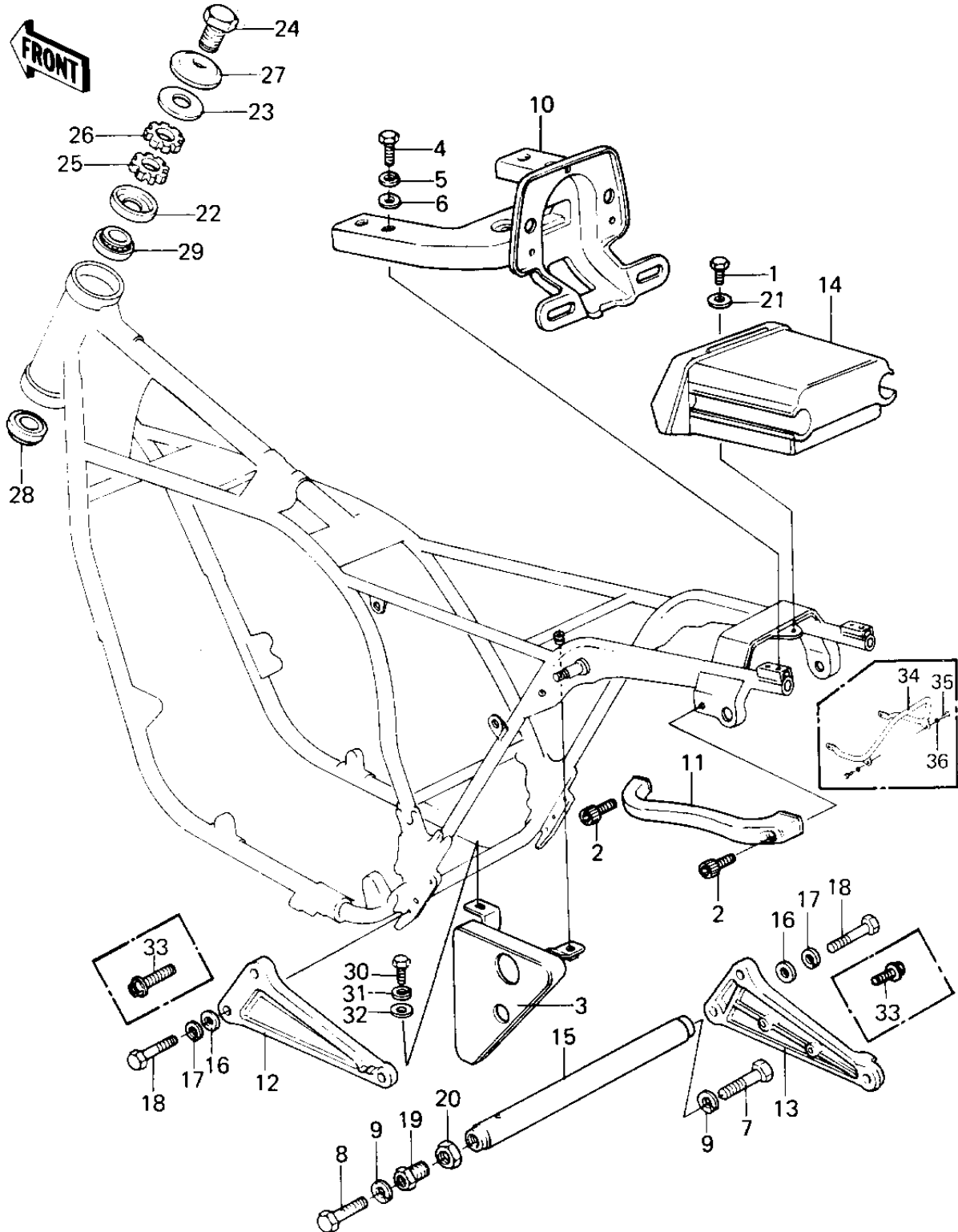


## 1980 KZ1300-A2 PARTS DIAGRAM

FRAME FITTINGS



## 1980 KZ1300-A2 PARTS LIST

### FRAME FITTINGS

ITEM NAME	PART NUMBER	QUANTITY
BOLT-UPSET 6X14 (Ref # 1)	112B0614	1
BOLT SOCKET, 8 X 20 (Ref # 2)	120Q0820	1
COVER,SEAT LOCK (Ref # 3)	14025-1246	2
BOLT-SMALL-UPSET,8X16 (Ref # 4)	115G0816	1
WASHER SPRING 8MM (Ref # 5)	461F0800	4
WASHER PLAIN 8MM (Ref # 6)	410B0800	1
BOLT,HEX HEAD,10X25 (Ref # 7)	113G1025	1
BOLT-UPSET,10X30 (Ref # 8)	112G1030	1
WASHER SPRING 10MM (Ref # 9)	461F1000	1
BRACKET,ASSY (Ref # 10)	23062-1003	1
GRIP,FRAME (Ref # 11)	32109-1012	1
STAY,MUFFLER,L.H (Ref # 12)	35011-1019	1
STAY,MUFFLER,R.H (Ref # 13)	35011-1020	1
CASE,STORAGE (Ref # 14)	39012-1001	1
CROSSMEMBER (Ref # 15)	39042-1001	1
WASHER PLAIN 8MM (Ref # 16)	411B0800	1
BOLT,HEX HEAD,8X30 (Ref # 18)	92001-1142	1
BOLT,CROSSMEMBER FITT (Ref # 19)	92001-1216	1
NUT,CROSSMEMBER FITTI (Ref # 20)	92015-1086	1
WASHER 6.5X22X1.6T (Ref # 21)	92022-237	1
CAP,STEERING STEM HEA (Ref # 22)	11012-1059	1
WASHER,WAVE (Ref # 23)	46100-003	1
BOLT,STEERG STEM HEAD (Ref # 24)	92007-031	1
NUT,STEERING STEM HEA (Ref # 25)	92015-1052	1
NUT,STEERING STEM HEA (Ref # 26)	92015-1069	1
WASHER,STEERG STM HD (Ref # 27)	92022-230	1
BEARING,ROLLER,32006 (Ref # 28)	92116-1008	1
BRG,ROLLER,HR320/28XJ (Ref # 29)	92116-1009	1
BOLT-UPSET,6X12 (Ref # 30)	112G0612	1

## 1980 KZ1300-A2 PARTS LIST

### FRAME FITTINGS

ITEM NAME	PART NUMBER	QUANTITY
WASHER SPRING 6MM (Ref # 31)	461F0600	1
WASHER PLAIN 6MM (Ref # 32)	411B0600	1
BOLT,8X28 (Ref # 33)	92001-1095	1
STAY,REAR (Ref # 34)	35011-1070	1
BOLT-SMALL-UPSET,8X14 (Ref # 35)	115B0814	1