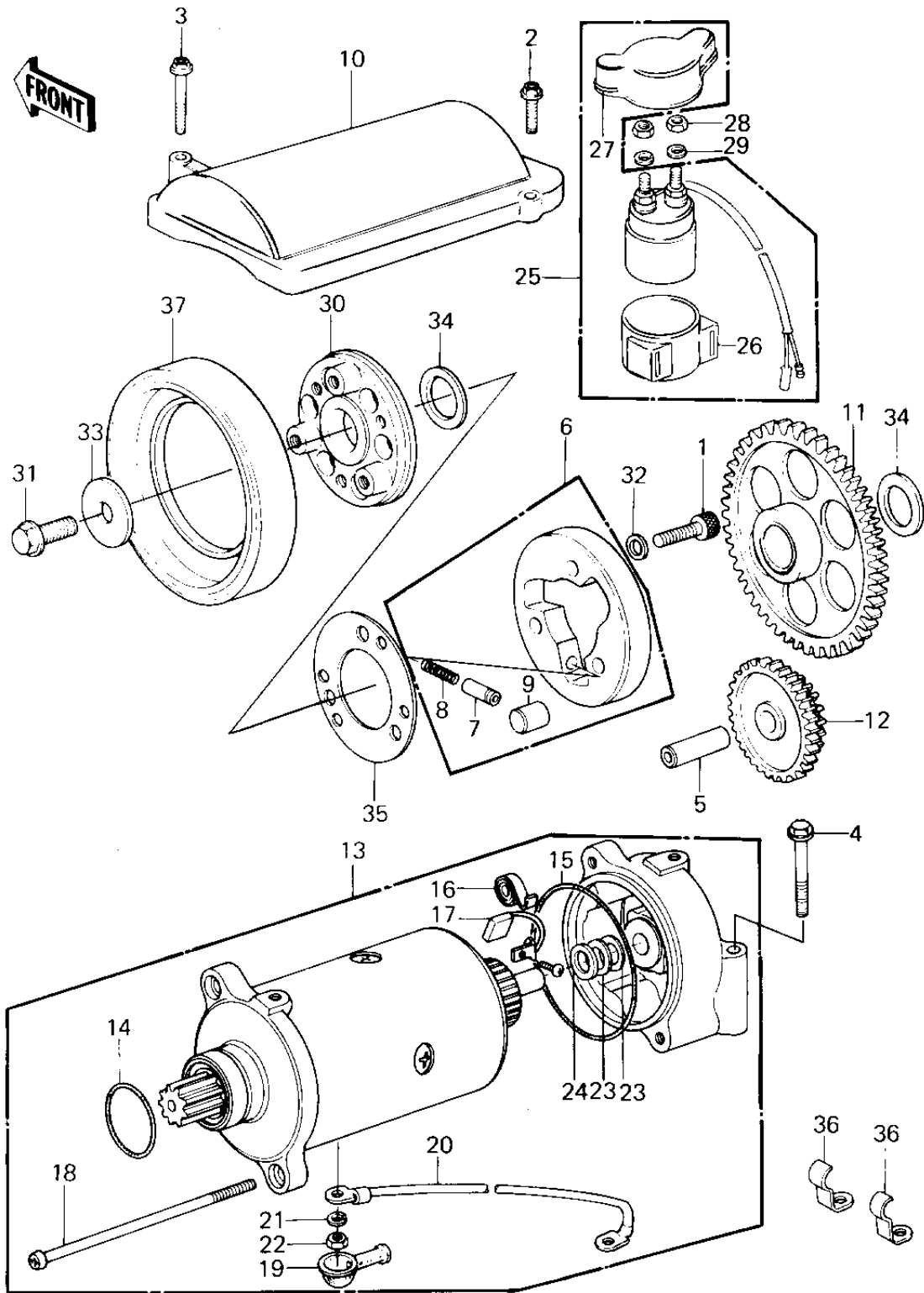


1980 KZ1300-A2 PARTS DIAGRAM

STARTER MOTOR/STARTER CLUTCH (KZ1300-A1/



1980 KZ1300-A2 PARTS LIST

STARTER MOTOR/STARTER CLUTCH (KZ1300-A1/

ITEM NAME	PART NUMBER	QUANTITY
BOLT, SOCKET, 8X30 (Ref # 1)	120P0830	1
BOLT, FLANGED, 6X25 (Ref # 2)	130B0625	1
BOLT, FLANGED, 6X40 (Ref # 3)	130B0640	1
BOLT, FLANGED, 6X55 (Ref # 4)	130G0655	1
PIN-PISTON (Ref # 5)	13002-019	1
CLUTCH-ASSY-ONEWAY (Ref # 6)	13193-1012	1
PIN (Ref # 7)	92043-087	1
SPRING (Ref # 8)	92081-110	1
ROLLER (Ref # 9)	92122-004	1
COVER, STARTER MOTOR (Ref # 10)	14025-1752	1
GEAR, STARTER CLUTCH (Ref # 11)	16085-1010	1
GEAR, STARTER REDUCTON (Ref # 12)	16085-1011	1
MOTOR ASSY, STARTER (Ref # 13)	21163-1005	1
"O" RING, STARTING MTR (Ref # 14)	21027-004	1
"O" RING, STARTING MTR (Ref # 15)	21027-003	1
SPRING, CARBON BRUSH (Ref # 16)	21040-003	1
CARBON BRUSH (Ref # 17)	21039-003	1
SCREW, PAN HEAD, 6X110 (Ref # 18)	21015-005	1
GROMMET, CORD (Ref # 19)	21017-017	1
WIRE, LEAD, STARTER MTR (Ref # 20)	26011-1054	1
WASHER SPRING 6MM (Ref # 21)	461F0600	2
NUT 6MM (Ref # 22)	312B0600	2
WASHER, THRUST, 0.2T (Ref # 23)	21025-011	1
WASHER, THRUST, 1.6T (Ref # 24)	21025-010	1
SWITCH, MAGNETIC (Ref # 25)	27010-1025	1
DAMPER MAG SWITCH SHK (Ref # 26)	21064-002	1
COVER, MAGNETIC SWITCH (Ref # 27)	14025-1165	1
HUB, TORSION DAMPER (Ref # 30)	49030-1002	1
BOLT, DAMPER, L.H. THRED (Ref # 31)	92001-1212	1

1980 KZ1300-A2 PARTS LIST

STARTER MOTOR/STARTER CLUTCH (KZ1300-A1/

ITEM NAME	PART NUMBER	QUANTITY
WASHER,PLAIN (Ref # 32)	92022-1108	1
WASHER-PLN,11X36X4 (Ref # 33)	92022-307	1
SPACER,25X34X2.3 (Ref # 34)	92026-1059	1
PLATE,CLUTCH STARTER (Ref # 35)	92026-112	1
CLAMP,LEAD WIRE (Ref # 36)	92037-1345	1
DAMPER,TORSION (Ref # 37)	92075-1118	1