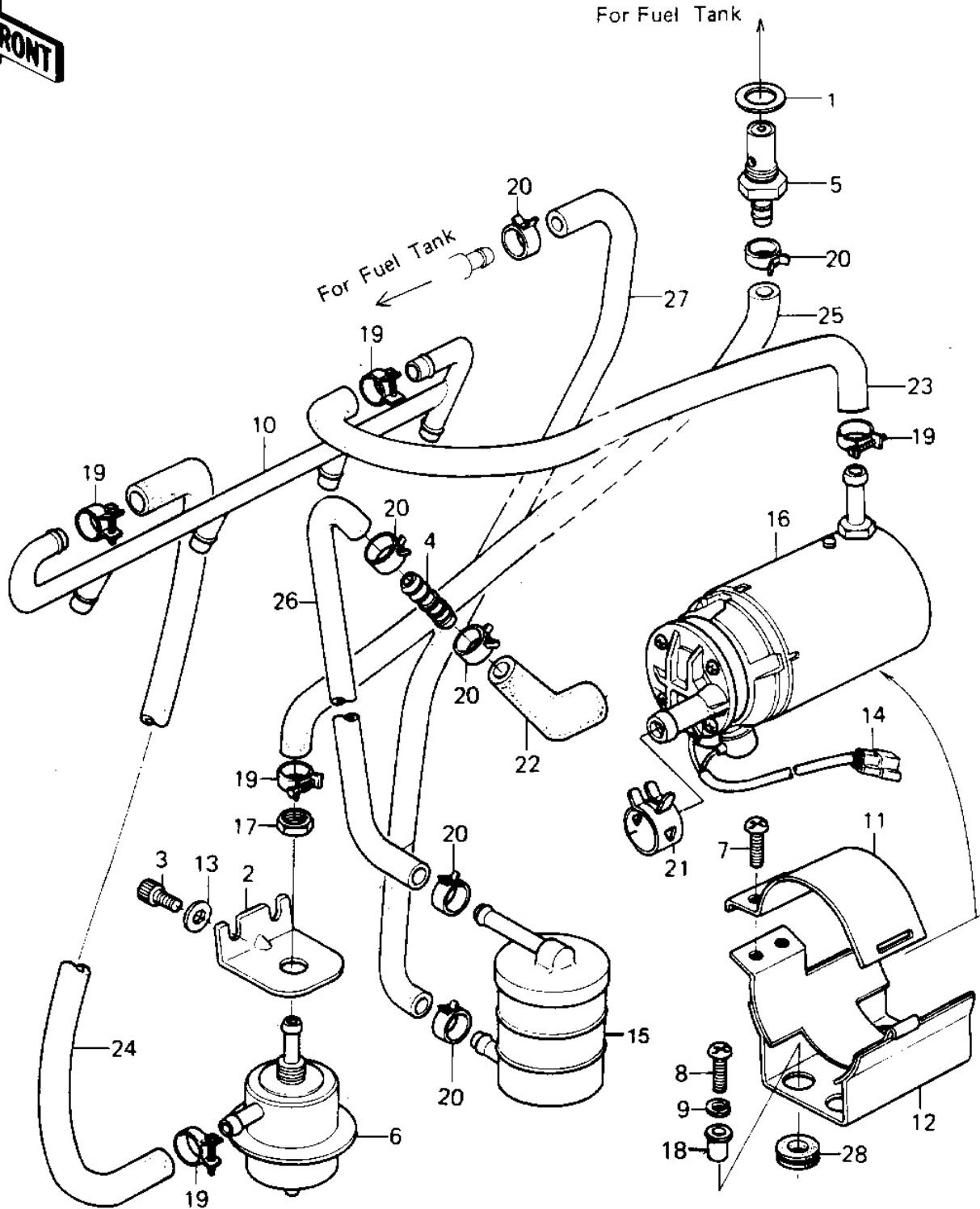


1980 Classic PARTS DIAGRAM

FUEL PUMP



1980 Classic PARTS LIST

FUEL PUMP

ITEM NAME	PART NUMBER	QUANTITY
GASKET,RELIEF VLV FIT (Ref # 1)	11009-1182	1
BKT,PRESSURE REGULATO (Ref # 2)	11034-1723	1
BOLT,SOCKET,5X8 (Ref # 3)	120P0508A	2
CONNECTOR,FUEL PUMP (Ref # 4)	13159-1006	1
VALVE ASSY,RELIEF (Ref # 5)	16130-1002	1
REGULATOR-FUEL (Ref # 6)	16162-1002	1
SCREW PAN HEAD 6X20 (Ref # 7)	220B0620	2
SCREW PAN HEAD 6X20 (Ref # 8)	220B0620	4
WASHER SPRING 6MM (Ref # 9)	461F0600	4
PIPE ASSY (Ref # 10)	31064-1002	1
BKT,FUEL PUMP FITTING (Ref # 11)	11034-1721	1
BKT,FUEL PUMP FITTING (Ref # 12)	11034-1722	1
WASHER PLAIN 5MM (Ref # 13)	410B0500	2
WIRE,FUEL PUMP LEAD (Ref # 14)	26011-1076	1
FILTER,FUEL (Ref # 15)	49019-1001	1
PUMP ASSY,FUEL (Ref # 16)	49040-1001	1
NUT,12M/M (Ref # 17)	92015-1101	1
COLLAR (Ref # 18)	92027-194	4
CLAMP (Ref # 19)	92037-1178	5
CLAMP (Ref # 20)	92037-1181	6
CLAMP (Ref # 21)	92037-1206	1
TUBE (Ref # 22)	92059-1120	1
TUBE,7.5X13.5X272 (Ref # 23)	92059-1121	1
TUBE,7.5X13.5X285 (Ref # 24)	92059-1122	1
TUBE (Ref # 25)	92059-1134	1
TUBE,7.6X14X140 (Ref # 26)	92059-1146	1
TUBE,7.6X14X360 (Ref # 27)	92059-1147	1
DAMPER RUBBER (Ref # 28)	92075-277	4