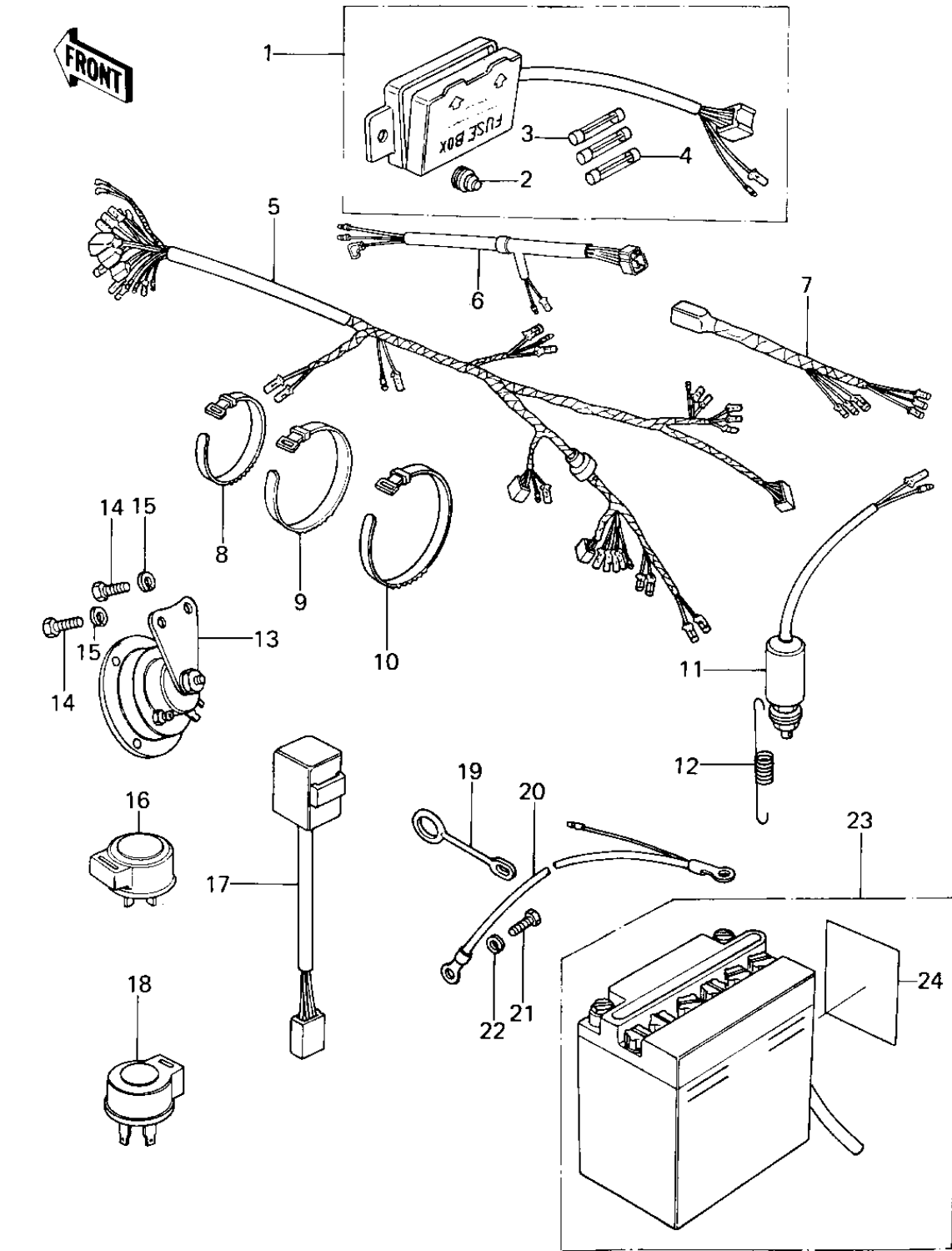


1978 KZ650-B2 PARTS DIAGRAM

CHASSIS ELECTRICAL EQUIPMENT



1978 KZ650-B2 PARTS LIST

CHASSIS ELECTRICAL EQUIPMENT

| ITEM NAME | PART NUMBER | QUANTITY |
|----------------------------------|-------------|----------|
| FUSE ASSY (Ref # 1) | 26004-035 | 1 |
| FUSE ASSY (Ref # 1) | 26004-1002 | 1 |
| DAMPER RUBBER,FUSE (Ref # 2) | 92075-279 | 1 |
| FUSE-20A (Ref # 3) | 26006-005 | 1 |
| FUSE 10A (Ref # 4) | 26006-003 | 1 |
| WIRING HARNESS,MAIN (Ref # 5) | 26001-143 | 1 |
| HARNESS,MAIN (Ref # 5) | 26001-1025 | 1 |
| HARNESS,MAIN (Ref # 5) | 26001-1131 | 1 |
| HARNESS,CENTER (Ref # 6) | 26001-1022 | 1 |
| WIRING HARNESS,REAR (Ref # 7) | 26002-063 | 1 |
| BAND,SHORT (Ref # 8) | 92072-030 | 1 |
| BAND,SHORT (Ref # 8) | 92072-030 | 1 |
| BAND,MIDDLE (Ref # 9) | 92072-031 | 1 |
| BAND,WIRING HARNESS (Ref # 10) | 92072-056 | 1 |
| SWITCH-BRAKE LAMP (Ref # 11) | 27010-017 | 1 |
| SPRING-BRAKE LAMP SW (Ref # 12) | 27011-011 | 1 |
| SPRING BRAKE LAMP SW (Ref # 12) | 27011-009 | 1 |
| HORN (Ref # 13) | 27003-076 | 1 |
| BOLT-SMALL-UPSET,8X16 (Ref # 14) | 115G0816 | 1 |
| WASHER SPRING 8MM (Ref # 15) | 461F0800 | 1 |
| RELAY,TURN SIGNAL (Ref # 16) | 27002-016 | 1 |
| SWITCH,OUTAGE,INDICTR (Ref # 17) | 28019-001 | 1 |
| RELAY-TURN SIGNAL (Ref # 18) | 27002-011 | 1 |
| CLAMP,OVER FLOW PIPE (Ref # 19) | 92037-134 | 1 |
| WIRE,BATTERY GROUND (Ref # 20) | 26010-049 | 1 |
| BOLT,HEX HEAD,6MM (Ref # 21) | 92001-137 | 1 |
| WASHER SPRING 6MM (Ref # 22) | 461F0600 | 1 |
| YUA BAT YB10L-A2 (Ref # 23) | 26012-041 | 1 |
| BATTERY 12V11AH W/LA (Ref # 23) | 26012-1010 | 1 |