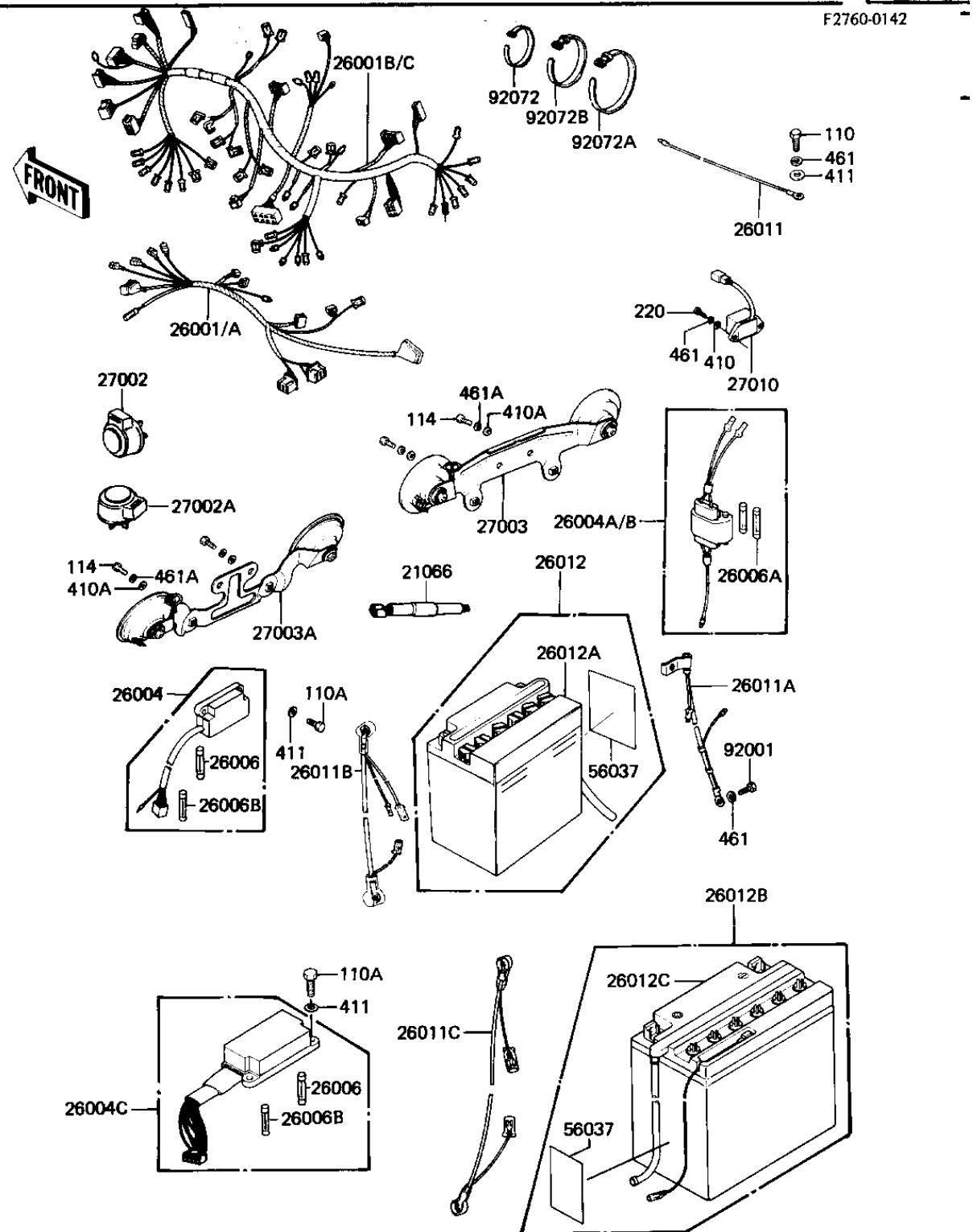


# 1982 GPz PARTS DIAGRAM

## CHASSIS ELECTRICAL EQUIPMENT



# 1982 GPz PARTS LIST

## CHASSIS ELECTRICAL EQUIPMENT

ITEM NAME	PART NUMBER	QUANTITY
HARNESS,ELECTRIC CONT (Ref # 26001A)	26001-1328	1
HARNESS,MAIN (Ref # 26001C)	26001-1366	1
FUSE-ASSY,ACCESSORY (Ref # 26004B)	26004-1016	1
FUSE-ASSY (Ref # 26004C)	26004-1017	1
FUSE 10A (Ref # 26006)	26006-003	5
FUSE,10A,L=30M/M (Ref # 26006A)	26006-1002	3
FUSE,30A,L=25M/M (Ref # 26006B)	26006-1005	2
WIRE-LEAD,BATTERY,(-) (Ref # 26011A)	26011-1119	1
WIRE-LEAD,STRTR MOTOR (Ref # 26011C)	26011-1154	1
FB BAT 12N16-3BSENSOR (Ref # 26012B)	26012-1053	1
26012-1013 (Canada) (Ref # 26012C)	26012-1054	1
RELAY-TURN SIGNAL (Ref # 27002)	27002-011	1
RELAY,TURN SIGNAL (Ref # 27002A)	27002-016	1
HORN,DOUBLE (Ref # 27003A)	27003-1143	1
SWITCH,RESERVE LIGHTI (Ref # 27010)	27010-1024	1
LABEL-WARNING,BATTERY (Ref # 56037)	56040-1036	1
BOLT,HEX HEAD,6MM (Ref # 92001)	92001-137	1
BAND,MIDDLE (Ref # 92072)	92072-031	7
BAND,LONG (Ref # 92072A)	92072-032	2
BAND,WIRING HARNESS (Ref # 92072B)	92072-056	2
BOLT-UPSET,6X12 (Ref # 110)	112G0612	1
BOLT 6X22 (Ref # 110A)	112B0622	2
BOLT-SMALL,8X16,BLACK (Ref # 114)	115C0816	2
SCREW PAN HEAD 6X20 (Ref # 220)	220B0620	2
WASHER PLAIN 6MM (Ref # 410)	410B0600	2
WASHER,PLAIN,8MM (Ref # 410A)	92022-1554	2
WASHER PLAIN 6MM (Ref # 411)	411B0600	3
WASHER SPRING 6MM (Ref # 461)	461F0600	6
WASHER-SPRING,8MM,BLA (Ref # 461A)	461K0800	2