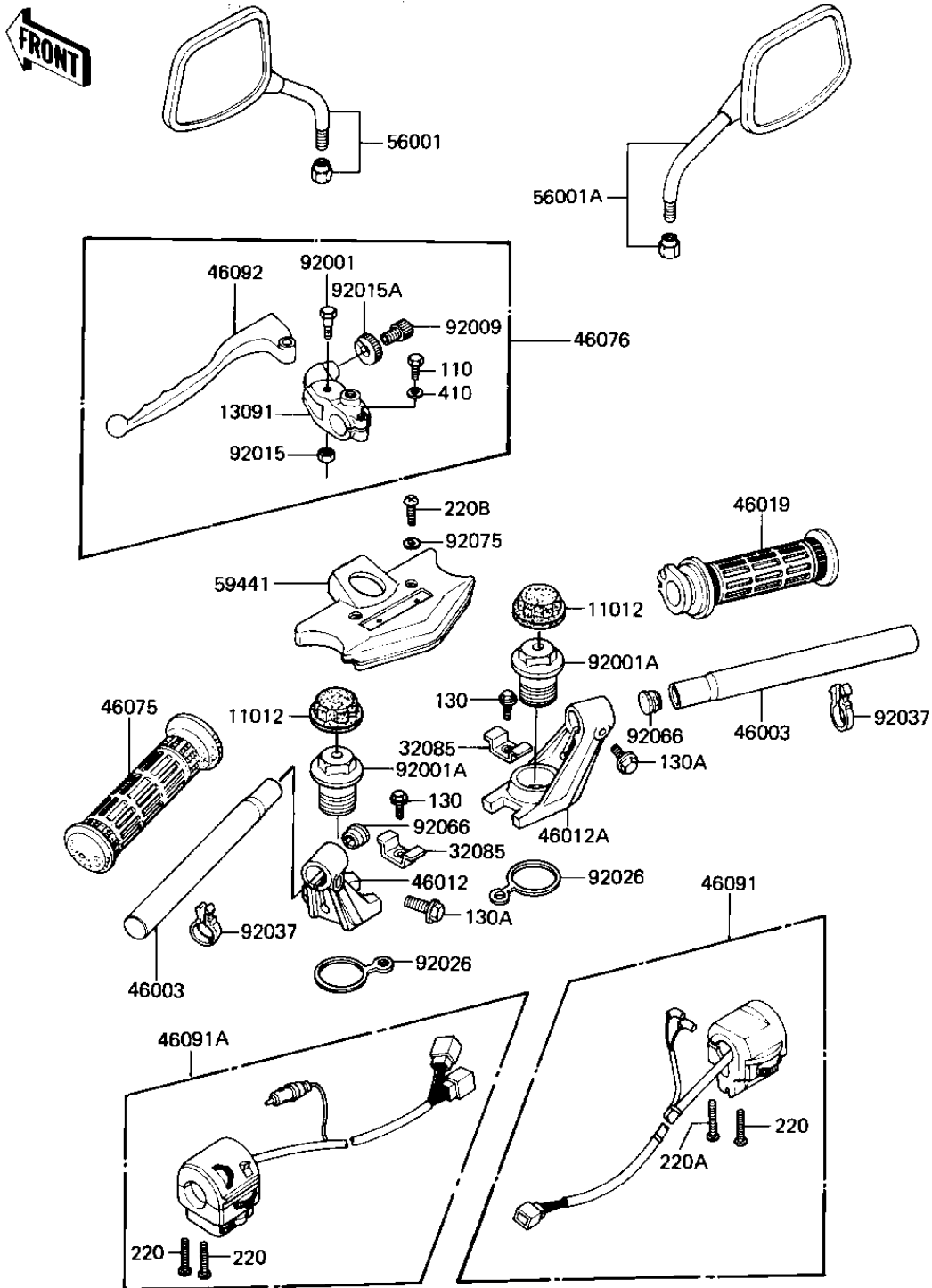


1982 GPz PARTS DIAGRAM

HANDLEBAR (KZ1100-B2)

F2310-0148



1982 GPz PARTS LIST

HANDLEBAR (KZ1100-B2)

ITEM NAME	PART NUMBER	QUANTITY
CAP,BOLT,PP,BLACK (Ref # 11012)	11012-1250	2
HOLDER,CLUTCH LEVER (Ref # 13091)	13091-1046	1
STOPPER (Ref # 32085)	32085-1092	2
HANDLEBAR (Ref # 46003)	46003-1094	2
HOLDER-HANDLE,LH (Ref # 46012)	46012-1022	1
HOLDER-HANDLE,RH (Ref # 46012A)	46012-1023	1
GRIP-ASSY,THROTTLE (Ref # 46019)	46019-1015	1
GRIP,LH (Ref # 46075)	46075-1022	1
LEVER-ASSY-GRIP,CLUTC (Ref # 46076)	46076-1026	1
HOUSING-ASSY-CNTRL,RH (Ref # 46091)	46091-1214	1
HOUSING-ASSY-CNTRL,LH (Ref # 46091A)	46091-1228	1
LEVER-GRIP,CLUTCH (Ref # 46092)	46092-1024	1
MIRROR-ASSY,LH (Ref # 56001)	56001-1352	1
MIRROR-ASSY,RH (Ref # 56001A)	56001-1353	1
COVER-HANDLE (Ref # 59441)	59441-1004	1
BOLT,CLUTCH LEVER,BLA (Ref # 92001)	92001-1548	1
BOLT,FLANGED,34X40,BL (Ref # 92001A)	92001-1563	2
SCREW,CABLE ADJUST,8 (Ref # 92009)	92009-1134	1
NUT,LOCK,6MM,BLACK (Ref # 92015)	92015-1191	1
NUT,CABLE ADJUST LOCK (Ref # 92015A)	92015-1197	1
SPACER,HANDLE HOLDER (Ref # 92026)	92026-1116	2
CLAMP,ID=16,PP (Ref # 92037)	92037-1334	2
PLUG,HANDLE (Ref # 92066)	92066-1093	2
WASHER-PLAIN,4MM (Ref # 92075)	23058-002	2
BOLT,6X22,BLACK (Ref # 110)	110C0622	1
BOLT-FLANGED,6X16 (Ref # 130)	130J0616	2
BOLT-FLANGED,8X25,BLA (Ref # 130A)	130S0825	2
SCREW-PAN-CROS (Ref # 220)	220B0535	3
SCREW-PAN-CROS (Ref # 220A)	220B0540	1

1982 GPz PARTS LIST

HANDLEBAR (KZ1100-B2)

ITEM NAME	PART NUMBER	QUANTITY
SCREW-PAN-CROS (Ref # 220B)	220C0430	2