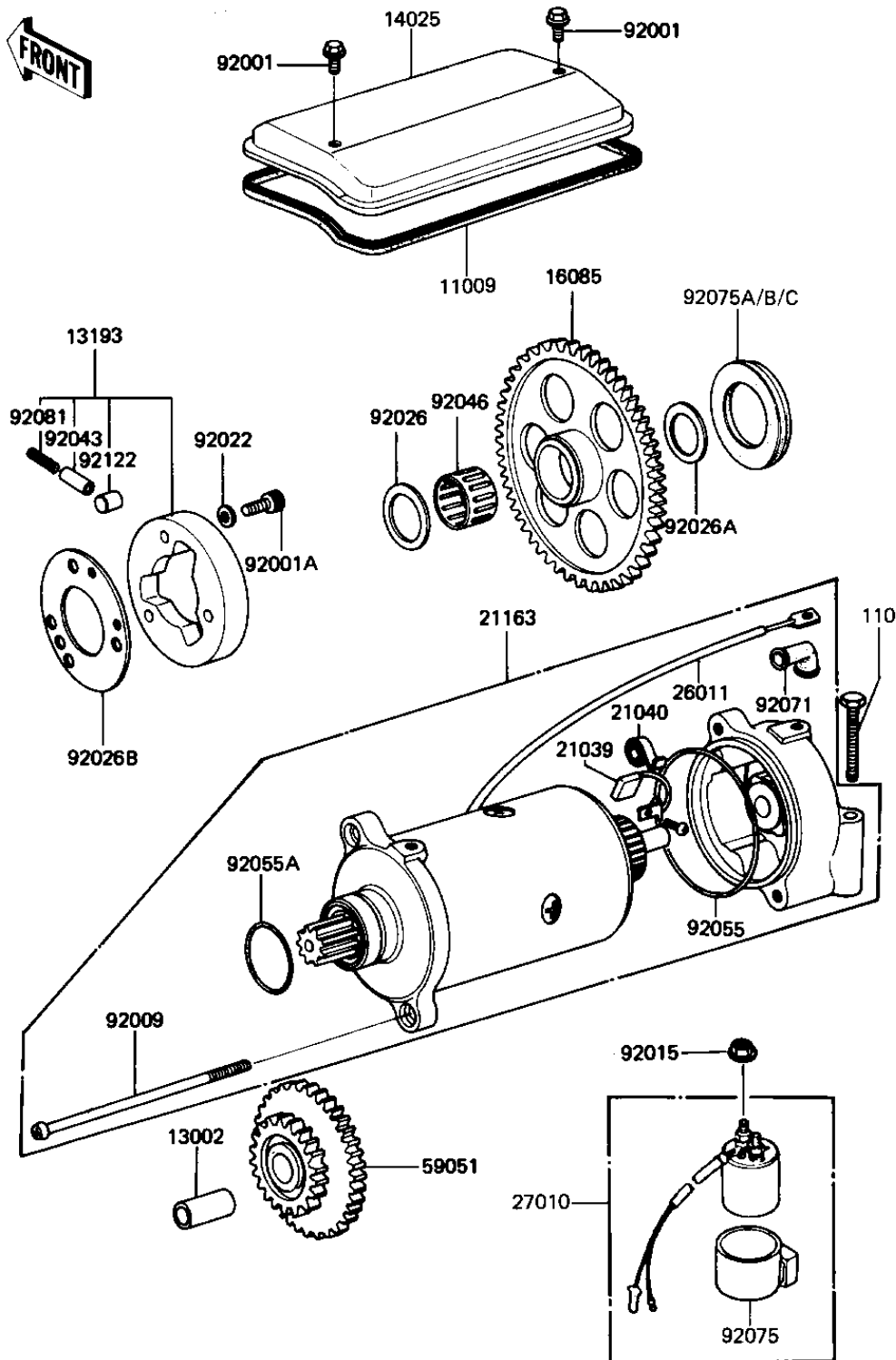


1982 GPz PARTS DIAGRAM

STARTER MOTOR/STARTER CLUTCH (KZ1100-B1)

E1840-0010



1982 GPz PARTS LIST

STARTER MOTOR/STARTER CLUTCH (KZ1100-B1)

| ITEM NAME | PART NUMBER | QUANTITY |
|--------------------------------------|-------------|----------|
| GASKET,START MOTOR CV (Ref # 11009) | 21166-001 | 1 |
| PIN-PISTON (Ref # 13002) | 13002-007 | 1 |
| CLUTCH ASSY,STARTING (Ref # 13193) | 13193-1006 | 1 |
| COVER,STARTER,BLACK (Ref # 14025) | 14025-1378 | 1 |
| GEAR,STARTING CLUTCH (Ref # 16085) | 16085-1012 | 1 |
| CARBON BRUSH (Ref # 21039) | 21039-003 | 2 |
| SPRING,CARBON BRUSH (Ref # 21040) | 21040-003 | 2 |
| STARTER-ELECTRIC (Ref # 21163) | 21163-1019 | 1 |
| WIRE,STARTER MOTOR (Ref # 26011) | 26010-055 | 1 |
| SWITCH ASSY,MAGNETIC (Ref # 27010) | 21164-005 | 1 |
| GEAR,STARTING MOTOR (Ref # 59051) | 21167-002 | 1 |
| BOLT,6X10 (Ref # 92001) | 92001-1151 | 2 |
| BOLT (Ref # 92001A) | 120P0816 | 3 |
| SCREW,PAN HEAD,6X110 (Ref # 92009) | 21015-005 | 2 |
| NUT,SGNL LAMP BRACKET (Ref # 92015) | 92015-1073 | 2 |
| WASHER,PLAIN (Ref # 92022) | 92022-1108 | 3 |
| SPACER (Ref # 92026) | 92026-1031 | 1 |
| SPACER (Ref # 92026A) | 92026-1033 | 1 |
| PLATE,CLUTCH STARTER (Ref # 92026B) | 92026-112 | 1 |
| PIN (Ref # 92043) | 92043-087 | 3 |
| BEARING,NEEDLE,K25302 (Ref # 92046) | 92046-1022 | 1 |
| "0" RING,STARTING MTR (Ref # 92055) | 21027-003 | 1 |
| "0" RING,STARTING MTR (Ref # 92055A) | 21027-004 | 1 |
| GROMMET,CORD (Ref # 92071) | 21017-017 | 2 |
| DAMPER MAG SWITCH SHK (Ref # 92075) | 21064-002 | 1 |
| DAMPER RUBBER,6.3T (Ref # 92075A) | 92075-1129 | AR |
| DAMPER RUBBER,7.3T (Ref # 92075B) | 92075-1130 | AR |
| DAMPER RUBBER,8.3T (Ref # 92075C) | 92075-1131 | AR |
| SPRING (Ref # 92081) | 92081-110 | 3 |

1982 GPz PARTS LIST

STARTER MOTOR/STARTER CLUTCH (KZ1100-B1)

| ITEM NAME | PART NUMBER | QUANTITY |
|----------------------------|-------------|----------|
| PIN (Ref # 92122) | 92122-001 | 3 |
| BOLT,EXCLUSIVE (Ref # 110) | 92001-1456 | 2 |