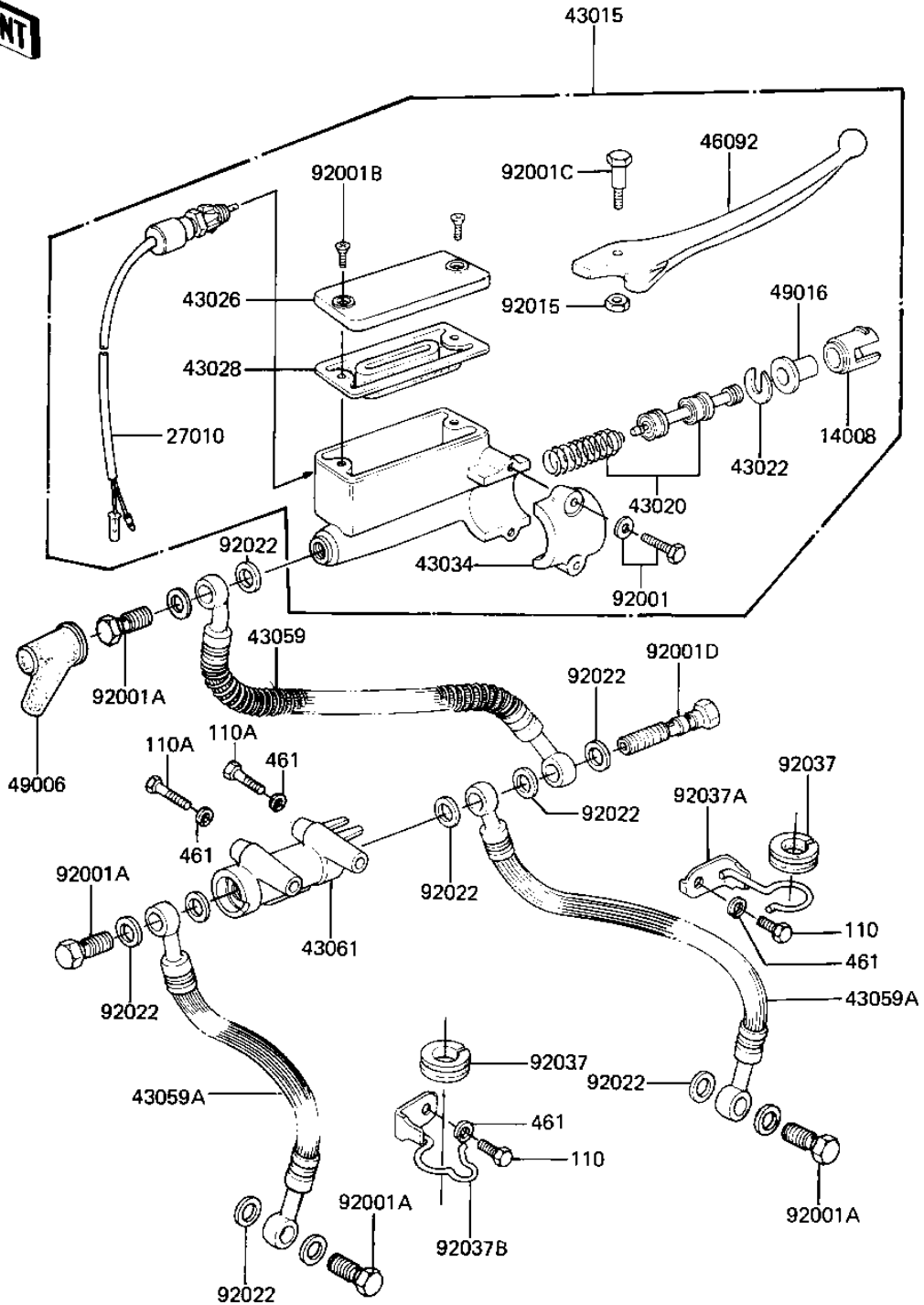


## 1981 LTD PARTS DIAGRAM

FRONT MASTER CYLINDER

F2291-0006



## 1981 LTD PARTS LIST

### FRONT MASTER CYLINDER

ITEM NAME	PART NUMBER	QUANTITY
LINER,PISTON (Ref # 14008)	14008-1007	1
SWITCH,BRAKE (Ref # 27010)	27010-1028	1
CYLINDER ASSY,FR (Ref # 43015)	43015-1046	1
PISTON-COMP-BRAKE (Ref # 43020)	43020-1023	1
STOPER,PISTON (Ref # 43022)	43022-1001	1
CAP,OIL CUP (Ref # 43026)	43026-1006	1
DIAPHRAGM (Ref # 43028)	43028-1008	1
HOLDER,MASTER CYLIND (Ref # 43034)	43034-1001	1
HOSE-BRAKE (Ref # 43059)	43059-1085	1
HOSE-BRAKE,FR,L=600 (Ref # 43059A)	43059-1192	1
JOINT,FR BRAKE HOSE (Ref # 43061)	43061-1002	1
LEVER,FRONT BRAKE (Ref # 46092)	46092-1012	1
BOOT,DUST (Ref # 49006)	49006-1041	1
DUST COVER (Ref # 49016)	49016-1010	1
BOLT,HEX HEAD,6X25 (Ref # 92001)	43033-003	1
BOLT,OIL,L=23 (Ref # 92001A)	92002-1888	1
SCREW,COUNTERSUNK HE (Ref # 92001B)	92001-1055	1
BOLT,CLUTCH LEV FITT (Ref # 92001C)	92001-1056	1
BOLT (Ref # 92001D)	92002-1909	1
NUT 6MM (Ref # 92015)	312B0600	1
WASHER-OIL BOLT (Ref # 92022)	43067-001	1
DAMPER RUBBER,CYL HS (Ref # 92037)	43064-006	1
CLAMP (Ref # 92037A)	92037-1218	1
CLAMP (Ref # 92037B)	92037-1232	1
BOLT-UPSET,6X12 (Ref # 110)	112G0612	1
BOLT-UPSET,6X40 (Ref # 110A)	112G0640	1
WASHER SPRING 6MM (Ref # 461)	461F0600	1