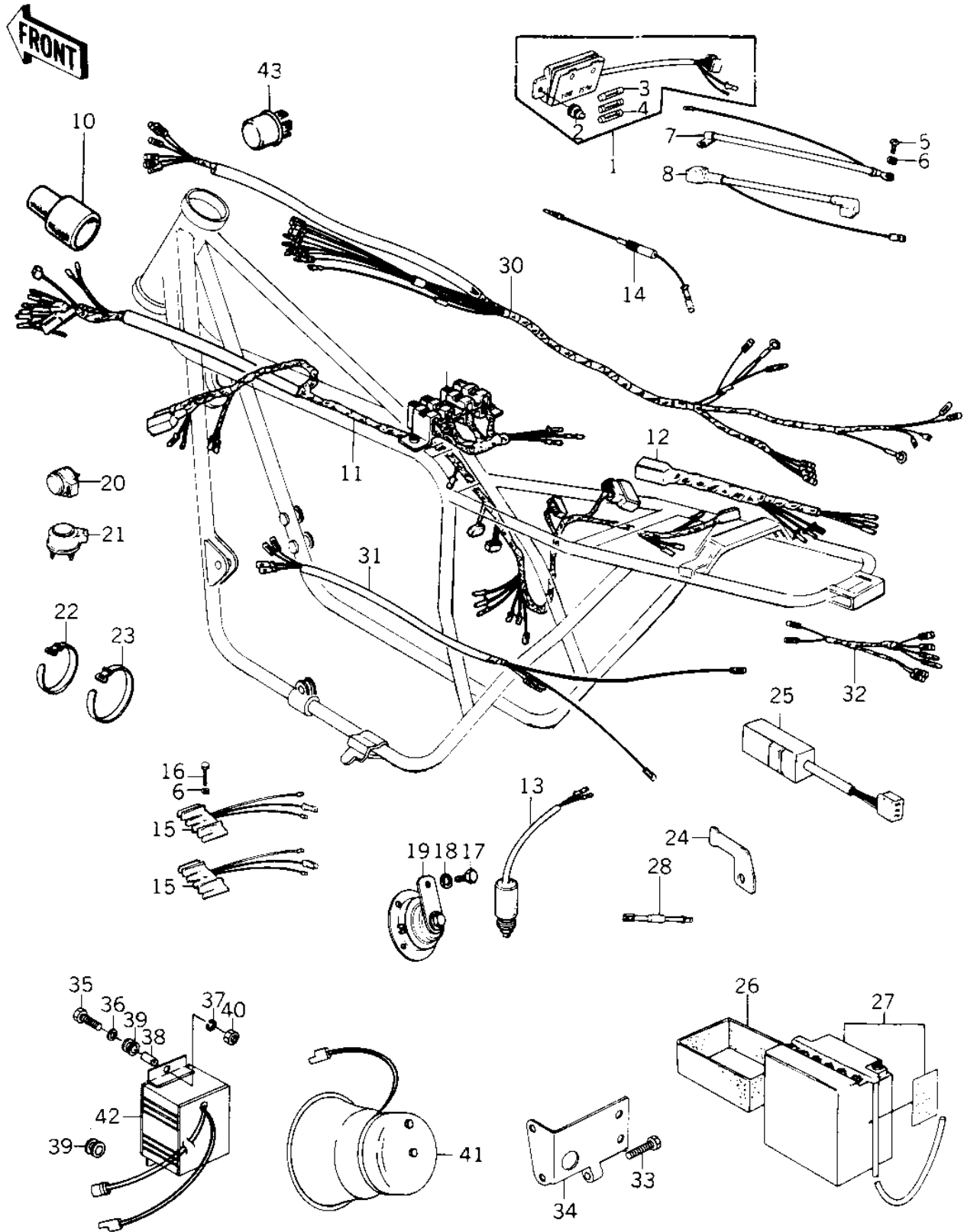


# 1978 Police 1000 PARTS DIAGRAM

CHASSIS ELECTRICAL EQUIPMENT ('78 C1/C1A)



# 1978 Police 1000 PARTS LIST

## CHASSIS ELECTRICAL EQUIPMENT ('78 C1/C1A)

ITEM NAME	PART NUMBER	QUANTITY
FUSE ASSY (Ref # 1)	26004-035	1
DAMPER RUBBER,FUSE (Ref # 2)	92075-279	1
FUSE-20A (Ref # 3)	26006-005	2
FUSE 10A (Ref # 4)	26006-003	3
BOLT,HEX HEAD,6MM (Ref # 5)	92001-137	1
WASHER SPRING 6MM (Ref # 6)	461F0600	1
WIRE,BATTERY GROUND (Ref # 7)	26010-054	1
WIRE,STARTER LEAD (Ref # 8)	26010-053	1
WIRING HARNESS,CENTER (Ref # 9)	26002-057	1
COVER WIRING HARNESS (Ref # 10)	26009-003	1
WIRING HARNESS,MAIN (Ref # 11)	26001-145	1
WIRING HARNESS,MAIN (Ref # 11)	26001-1035	1
WIRING HARNESS,REAR (Ref # 12)	26002-031	1
SWITCH-BRAKE LAMP (Ref # 13)	27010-017	1
FUSE ASSY (Ref # 14)	26004-1001	1
REGULATOR,HAZARD (Ref # 15)	21066-024	2
BOLT HEX HEAD 6X40 (Ref # 16)	110B0640	1
BOLT HEX HEAD 8X16 (Ref # 17)	110B0816	1
WASHER SPRING 8MM (Ref # 18)	461F0800	1
HORN (Ref # 19)	27003-065	1
HORN (Ref # 19)	27003-1006	1
RELAY-TURN SIGNAL (Ref # 20)	27002-011	1
RELAY,TURN SIGNAL (Ref # 21)	27002-016	1
BAND,SHORT (Ref # 22)	92072-030	2
BAND,SHORT (Ref # 22)	92072-030	8
BAND,WIRING HARNESS (Ref # 23)	92072-056	7
BAND,WIRING HARNESS (Ref # 23)	92072-056	8
BRACKET,OUTAGE SWITCH (Ref # 24)	32060-014	1
SWITCH,OUTAGE,INDICTR (Ref # 25)	28019-001	1

# 1978 Police 1000 PARTS LIST

## CHASSIS ELECTRICAL EQUIPMENT ('78 C1/C1A)

ITEM NAME	PART NUMBER	QUANTITY
CASE,BATTERY (Ref # 26)	32099-015	1
YUA BAT YB14L-A2 (Ref # 27)	26012-1008	1
REGULATOR (Ref # 28)	21066-026	1
LABEL-WARNING,BATTERY (Ref # 29)	56022-157	1
WIRING HARNESS,MAIN (Ref # 30)	26001-1011	1
WIRING HARNESS,HAZARD (Ref # 31)	26001-1012	1
WIRING HARNESS,TAIL (Ref # 32)	26001-1013	1
BOLT,FLANGED,10X70 (Ref # 33)	113B1070	1
BRACKET,SIREN (OPT) (Ref # 34)	11034-4001	1
BOLT HEX HEAD 6X18 (Ref # 35)	110B0618	2
WASHER-PLAIN (Ref # 36)	92022-193	2
WASHER SPRING 6MM (Ref # 37)	461F0600	2
COLLAR (Ref # 38)	92027-103	2
DAMPER RUBBER (Ref # 39)	92075-105	3
NUT 6MM (Ref # 40)	310B0600	2
(Ref # 41)		NA
(Ref # 42)		NA
RELAY,ALT FLASH (OPT) (Ref # 43)	27034-1001	1