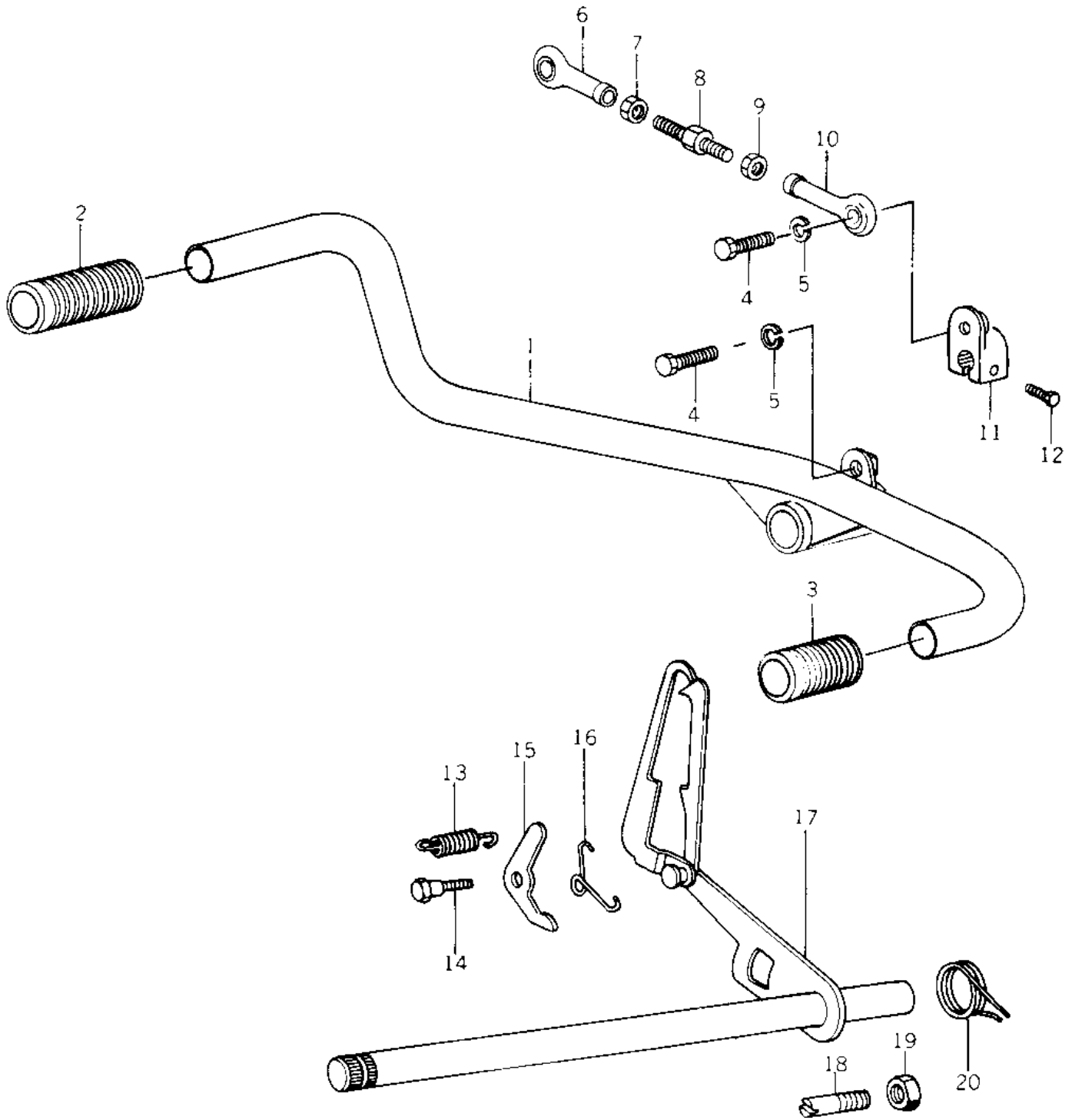


1978 Police 1000 PARTS DIAGRAM

GEAR CHANGE MECHANISM ('78 C1/C1A)



1978 Police 1000 PARTS LIST

GEAR CHANGE MECHANISM ('78 C1/C1A)

| ITEM NAME | PART NUMBER | QUANTITY |
|---------------------------------|-------------|----------|
| PEDAL, GEAR CHANGE (Ref # 1) | 13242-1004 | 1 |
| RUBBER KICK PEDAL (Ref # 2) | 13063-004 | 1 |
| DAMPER RUBB,GEAR CHN (Ref # 3) | 92075-1021 | 1 |
| BOLT-SMALL-UPSET 8X2 (Ref # 4) | 115G0825 | 2 |
| WASHER SPRING 8MM (Ref # 5) | 461F0800 | 2 |
| ROD END,TIE LH FEMAL (Ref # 6) | 39112-1004 | 1 |
| NUT,LH THREAD (Ref # 7) | 92015-1006 | 1 |
| BOLT,GEAR CHG LINKAG (Ref # 8) | 92001-1038 | 1 |
| NUT,RH THREAD (Ref # 9) | 92015-1005 | 1 |
| ROD END,TIE RH FEMAL (Ref # 10) | 39112-1003 | 1 |
| LEVER,CHANGE (Ref # 11) | 13156-1007 | 1 |
| BOLT-UPSET,6X20 (Ref # 12) | 112G0620 | 1 |
| SPRING CHNG DRUM LEV (Ref # 13) | 92081-051 | 1 |
| LEVER,GEAR CHNG DRUM (Ref # 15) | 13168-024 | 1 |
| SPRING,KICK PAWL (Ref # 16) | 92083-018 | 1 |
| LEVER ASSY GEAR CHNG (Ref # 17) | 13161-029 | 1 |
| PIN CHANGE PEDAL SPR (Ref # 18) | 92043-057 | 1 |
| NUT 8MM (Ref # 19) | 312B0800 | 2 |
| SPRING,CHG PEDL RTRN (Ref # 20) | 92083-028 | 1 |