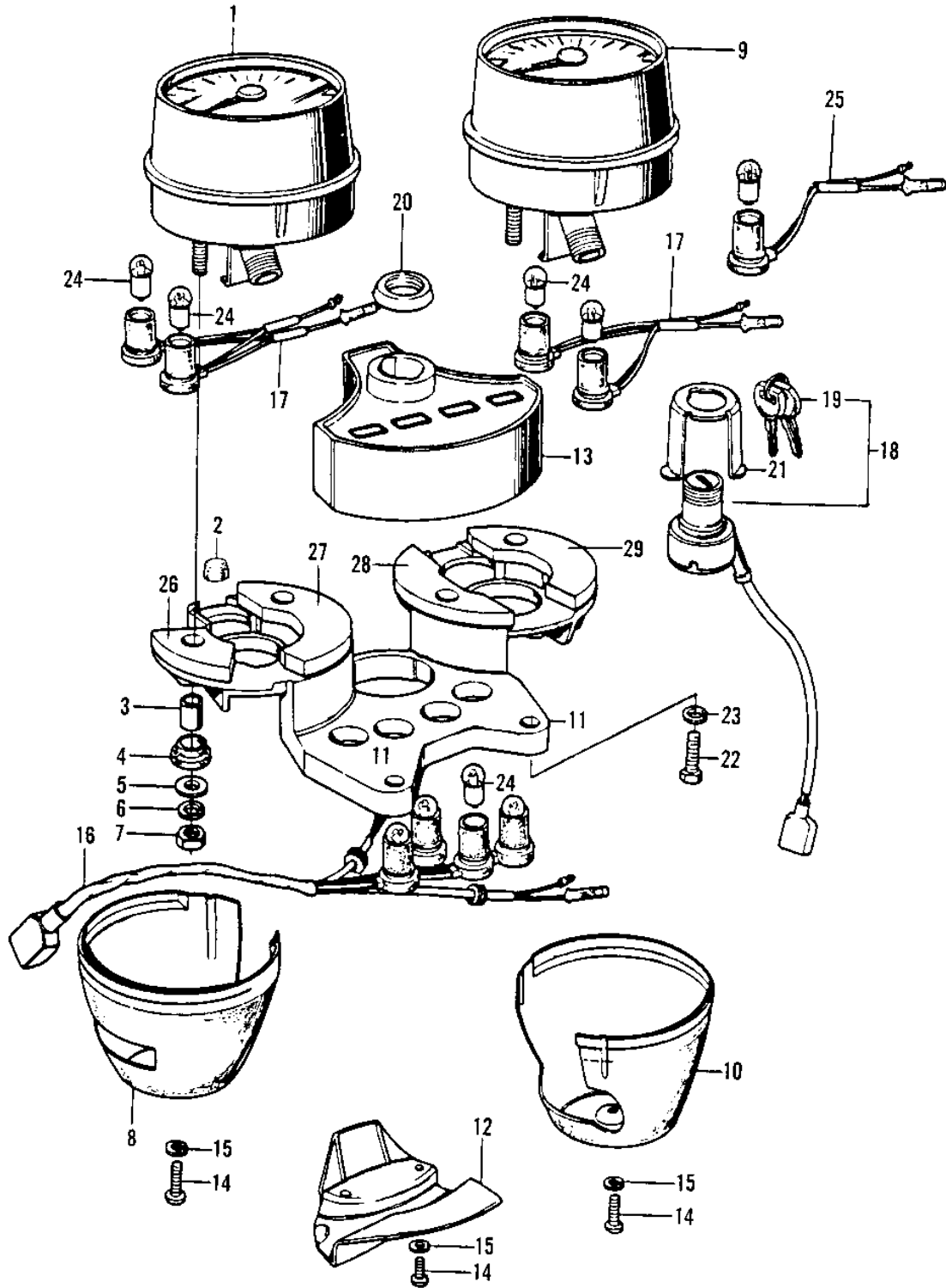


1973 Z1 PARTS DIAGRAM

METERS/IGNITION SWITCH



1973 Z1 PARTS LIST

METERS/IGNITION SWITCH

| ITEM NAME | PART NUMBER | QUANTITY |
|---|--------------|----------|
| SPEEDOMETER ASSY,MPH (Ref # 1) | 25005-121 | 1 |
| SPEEDOMETER ASSY,MPH (Ref # 1) | 25005-121 | 1 |
| SPEEDOMETER ASSY KPH (Canada) (Ref # 1) | 25001-073 | 1 |
| SHOCK DAMPER,SOCKET (Ref # 2) | 25019-029 | 2 |
| COLLAR,METER (Ref # 3) | 92027-211 | 4 |
| RUBBER,METER (Ref # 4) | 92075-172 | 4 |
| WASHER,PLAIN,5MM (Ref # 5) | 92022-241 | 4 |
| WASHER SPRING 5MM (Ref # 6) | 461F0500 | 4 |
| NUT 5MM (Ref # 7) | 312B0500A | 4 |
| COVER,SPEEDOMETER (Ref # 8) | 25012-010 | 1 |
| TACHOMETER ASSY (Ref # 9) | 25015-025 | 1 |
| TACHOMETER ASSY (Ref # 9) | 25015-025 | 1 |
| COVER,TACHOMETER (Ref # 10) | 25012-011 | 1 |
| BRACKET,SPEEDO (Ref # 11) | 25008-044 | 1 |
| COVER,WIRING HARNESS (Ref # 12) | 25024-001 | 1 |
| COVER,METER (Ref # 13) | 25023-011 | 1 |
| COVER,METER (Ref # 13) | 25023-011 | 1 |
| SCREW PAN HEAD 3X8 (Ref # 14) | 220B0308A | 5 |
| WASHER SPRING 3MM (Ref # 15) | 461F0300 | 5 |
| SOCKET ASSY,INDICATOR (Ref # 16) | 25011-026 | 1 |
| UNAVAILABLE IN PRICE BOOK (Ref # 16) | 25011-042 | 1 |
| SOCKET ASSY,METER LAM (Ref # 17) | 25011-027 | 2 |
| SWITCH ASSY,IGNITION (Ref # 18) | 27005-042 | 1 |
| KEY SET,#751 (Ref # 19) | 27008-046-51 | 1 |
| KEY SET,#752 (Ref # 19) | 27008-046-52 | 1 |
| KEY SET,#753 (Ref # 19) | 27008-046-53 | 1 |
| KEY SET,#754 (Ref # 19) | 27008-046-54 | 1 |
| KEY SET,#755 (Ref # 19) | 27008-046-55 | 1 |
| KEY,BLANK (Ref # 19) | 27008-1013 | AR |

1973 Z1 PARTS LIST

METERS/IGNITION SWITCH

| ITEM NAME | PART NUMBER | QUANTITY |
|---------------------------------|-------------|----------|
| NUT,IGNITION SW LOCK (Ref # 20) | 27007-004 | 1 |
| HOLDER IGNITION SW (Ref # 21) | 27019-003 | 1 |
| BOLT HEX HEAD 8X32 (Ref # 22) | 110B0832 | 2 |
| WASHER SPRING 8MM (Ref # 23) | 461F0800 | 2 |
| BULB 12V 3W (Ref # 24) | 92069-018 | 9 |
| SOCKET,TACHOMETER (Ref # 25) | 25011-043 | 1 |
| SHOCK DAMPER A,SPEED (Ref # 26) | 25019-025 | 1 |
| SHOCK DAMPER B,SPEED (Ref # 27) | 25019-026 | 1 |
| SHOCK DAMPER A,TACHO (Ref # 28) | 25019-027 | 1 |
| SHOCK DAMPER B,TACHO (Ref # 29) | 25019-028 | 1 |