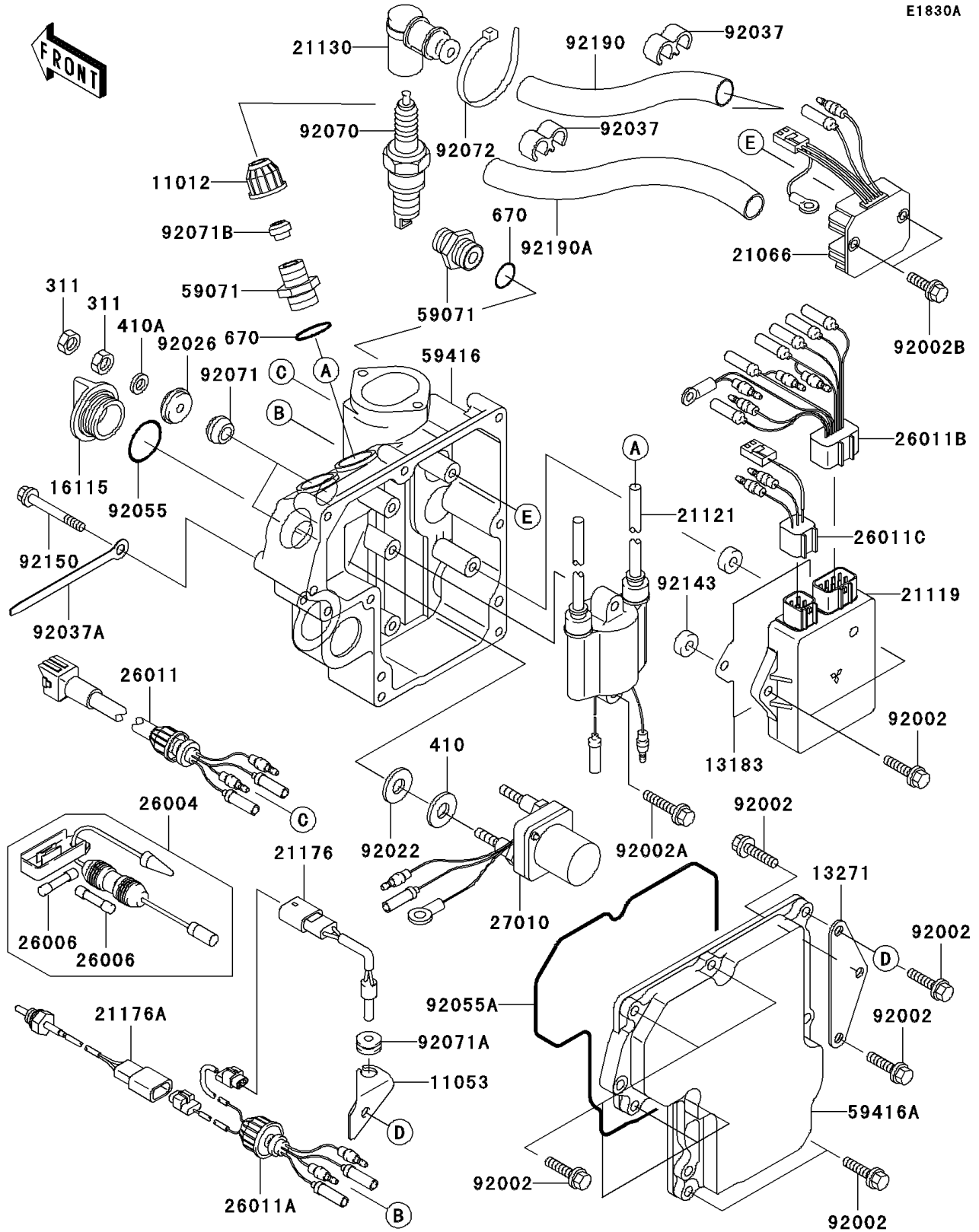


2005 800 SX-R PARTS DIAGRAM

Ignition System(A2/A3)



2005 800 SX-R PARTS LIST

Ignition System(A2/A3)

| ITEM NAME | PART NUMBER | QUANTITY |
|---------------------------------------|-------------|----------|
| NUT-HEX,6MM (Ref # 311) | 311R0600 | 1 |
| CAP (Ref # 11012) | 11012-3005 | 1 |
| BRACKET,AIR TEMP SENSOR (Ref # 11053) | 11053-3775 | 1 |
| PLATE (Ref # 13183) | 13183-3811 | 1 |
| PLATE (Ref # 13271) | 13271-3870 | 1 |
| CAP-OIL FILLER (Ref # 16115) | 16115-1009 | 1 |
| REGULATOR-VOLTAGE (Ref # 21066) | 21066-3709 | 1 |
| IGNITER (Ref # 21119) | 21119-3764 | 1 |
| COIL-IGNITION (Ref # 21121) | 21121-3713 | 1 |
| CAP-SPARK PLUG (Ref # 21130) | 21130-3707 | 1 |
| SENSOR,INTAKE AIR TEMP (Ref # 21176) | 21176-3730 | 1 |
| SENSOR,WATER TEMP (Ref # 21176A) | 21176-3758 | 1 |
| FUSE-ASSY (Ref # 26004) | 26004-3712 | 1 |
| FUSE,10A,L=30 (Ref # 26006) | 26006-0003 | 1 |
| WIRE-LEAD (Ref # 26011) | 26011-3792 | 1 |
| WIRE-LEAD,SENSOR (Ref # 26011A) | 26011-3906 | 1 |
| WIRE-LEAD (Ref # 26011B) | 26011-3907 | 1 |
| WIRE-LEAD (Ref # 26011C) | 26011-3908 | 1 |
| SWITCH,STARTER RELAY (Ref # 27010) | 27010-3760 | 1 |
| JOINT (Ref # 59071) | 59071-3001 | 1 |
| CASE-ELECTRIC,LWR (Ref # 59416) | 59416-3762 | 1 |
| CASE-ELECTRIC,UPP (Ref # 59416A) | 59416-3763 | 1 |
| BOLT,6X25 (Ref # 92002) | 92002-3714 | 1 |
| BOLT,6X30 (Ref # 92002A) | 92002-3726 | 1 |
| BOLT,6X20 (Ref # 92002B) | 92002-3755 | 1 |
| WASHER (Ref # 92022) | 92022-3035 | 1 |
| SPACER (Ref # 92026) | 92026-3703 | 1 |
| CLAMP,HOSE (Ref # 92037) | 92037-1603 | 1 |
| CLAMP,L=100 (Ref # 92037A) | 92037-3736 | 1 |

2005 800 SX-R PARTS LIST

Ignition System(A2/A3)

| ITEM NAME | PART NUMBER | QUANTITY |
|---|-------------|----------|
| RING-O,31.7X2.4 (Ref # 92055) | 92055-049 | 1 |
| RING-O,ELECTRIC CASE (Ref # 92055A) | 92055-3731 | 1 |
| PLUG-SPARK,BR8ES(NGK),SOLID (Ref # 92070) | 92070-3702 | 1 |
| GROMMET (Ref # 92071) | 92071-3004 | 1 |
| GROMMET (Ref # 92071A) | 92071-3733 | 1 |
| GROMMET (Ref # 92071B) | 92071-527 | 1 |
| BAND,L=99 (Ref # 92072) | 92072-3871 | 1 |
| COLLAR,6.5X16X6 (Ref # 92143) | 92143-1496 | 1 |
| BOLT,6X85 (Ref # 92150) | 92150-3763 | 1 |
| TUBE,HIGH TENSION,L=210 (Ref # 92190) | 92190-3708 | 1 |
| TUBE,8X10X295 (Ref # 92190A) | 92190-3960 | 1 |
| WASHER-PLAIN-SMALL,10MM (Ref # 410) | 410B1000 | 1 |
| WASHER-PLAIN-SMALL,6MM (Ref # 410A) | 410S0600 | 1 |
| O RING,16MM (Ref # 670) | 670B2016 | 1 |