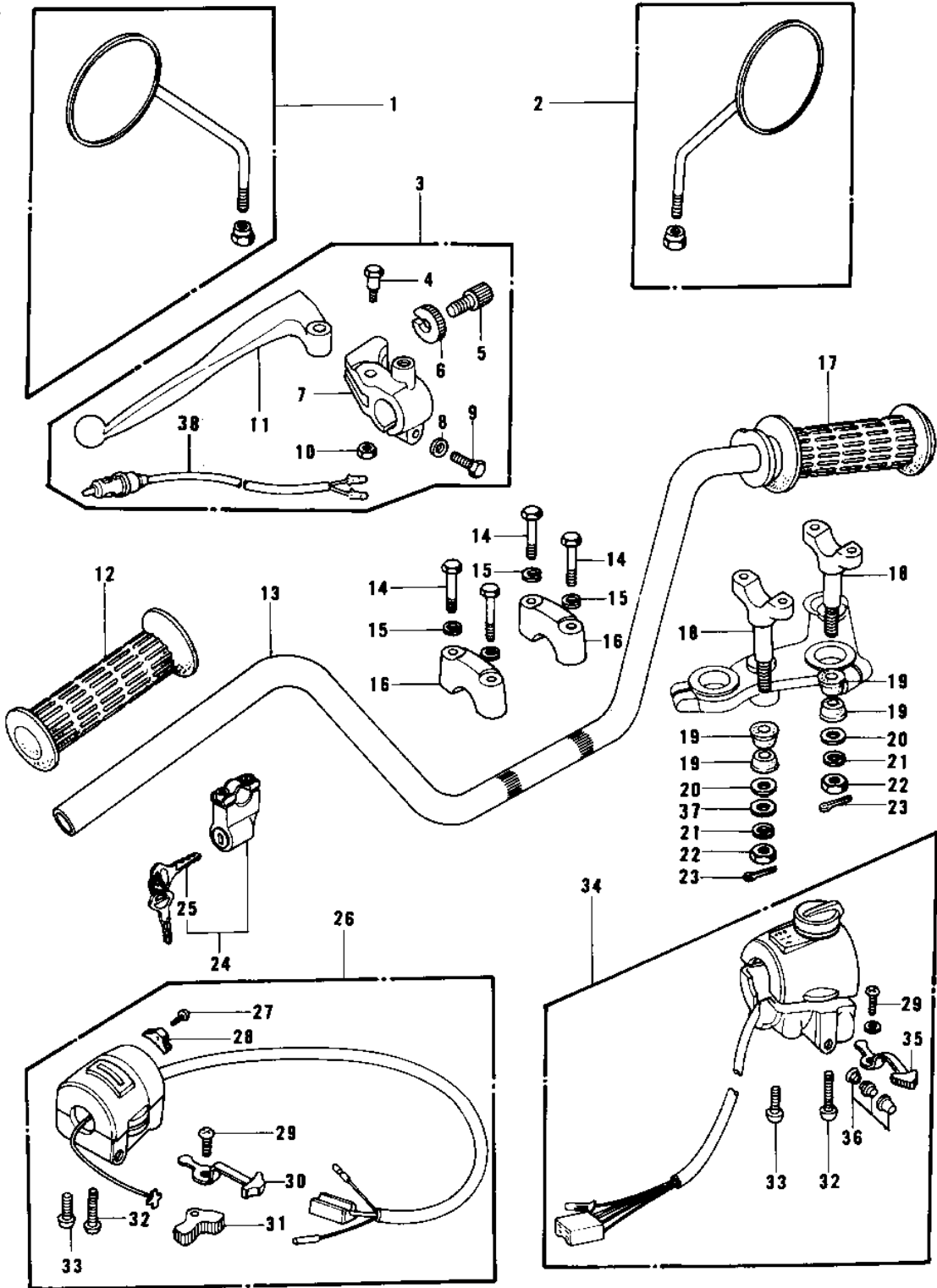


# 1979 KZ750-B4 PARTS DIAGRAM

## HANDLEBAR



# 1979 KZ750-B4 PARTS LIST

## HANDLEBAR

ITEM NAME	PART NUMBER	QUANTITY
REAR VIEW MIRROR,L.H (Ref # 1)	56003-019	1
REAR VIEW MIRROR,R.H (Ref # 2)	56002-029	1
LEVER ASSY,CLUTCH (Ref # 3)	46076-049	1
LEVER ASSY,CLUTCH (Ref # 3)	46076-054	1
BOLT,HEX HEAD (Ref # 4)	92007-047	1
SCREW CABLE ADJUST (Ref # 5)	46055-003	1
NUT-LOCK (Ref # 6)	46056-005	1
NUT,CABLE ADJUST NUT (Ref # 6)	46056-007	1
HOLDER,CLUTCH LEVER (Ref # 7)	46094-017	1
HOLDER,CLUTCH LEVER (Ref # 7)	46094-019	1
WASHER PLAIN 6MM (Ref # 8)	411B0600	1
WASHER PLAIN 6MM (Ref # 8)	410B0600	1
BOLT 6X22 (Ref # 9)	112B0622	1
BOLT-UPSET (Ref # 9)	112G0625	1
NUT,LOCK 6MM (Ref # 10)	92017-014	1
LEVER,CLUTCH (Ref # 11)	46092-023	1
RUBBER,L.H GRIP (Ref # 12)	46075-028	1
HANDLEBAR (Ref # 13)	46003-036	1
BOLT 8X38 (Ref # 14)	92001-1405	4
BOLT 8X38 (Ref # 14)	92001-1405	4
WASHER SPRING 8MM (Ref # 15)	461F0800	4
HOLDER-HANDLEBAR (Ref # 16)	46012-008	2
GRIP ASSY,THROTTLE (Ref # 17)	46019-038	1
HOLDER-HANDLEBAR LOW (Ref # 18)	46012-010	2
DAMPER RUBBER,HANDLE (Ref # 19)	92075-275	4
WASHER-HANDLEBAR FIT (Ref # 20)	92022-196	2
WASHER SPRING 10MM (Ref # 21)	461F1000	2
NUT,10MM (Ref # 22)	314B1000	2
NUT 10MM (Ref # 22)	315B1000	2

# 1979 KZ750-B4 PARTS LIST

## HANDLEBAR

ITEM NAME	PART NUMBER	QUANTITY
PIN,SNAP (Ref # 23)	554A0800	2
LOCK,HELMET (Ref # 24)	27039-001	1
HOUSING ASSY,CONT,L.H (Ref # 26)	46091-1079	1
HOUSING ASSY,CONT,L.H (Ref # 26)	46091-1079	1
SCREW CNTSNK HD 3X8 (Ref # 27)	221B0308A	1
KNOB,LIGHTING SW L.H (Ref # 28)	46044-013	1
SCREW PAN HEAD 3X5 (Ref # 29)	220B0305A	2
KNOB,LIGHTING SW L.H (Ref # 30)	46043-005	1
BUTTON, HORN PUSH (Ref # 31)	46028-006	1
SCREW-PAN-CROS (Ref # 32)	220B0535	2
SCREW-PAN-CROS (Ref # 32)	220B0540	2
SCREW PAN HEAD 5X30 (Ref # 33)	220B0530	2
HOUSING ASSY,R.H CONT (Ref # 34)	46091-1033	1
HOUSING ASSY,R.H CONT (Ref # 34)	46091-1033	1
HOUSING ASSY,R.H (Ref # 34)	46091-1039	1
HOUSING ASSY,R.H (Ref # 34)	46091-1039	1
HOUSING ASSY,CONT,R.H (Ref # 34)	46091-1078	1
KNOB,LIGHTING SW R.H (Ref # 35)	46043-004	1
SWITCH ASSY,HORN BUTN (Ref # 36)	27010-1009	1
WASHER,PLAIN (Ref # 37)	92022-239	1
SWITCH,CLUTCH (Ref # 38)	27043-002	1