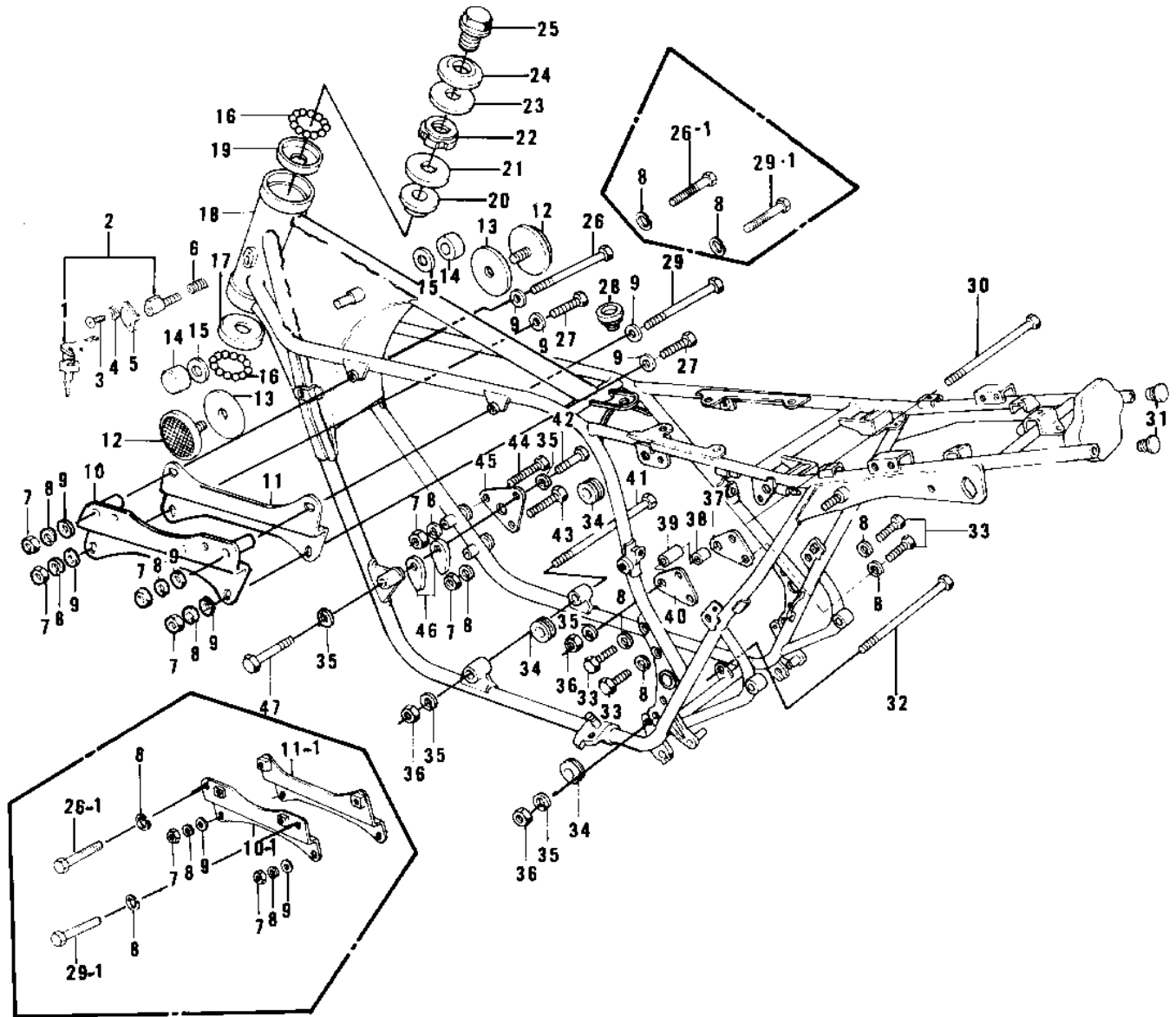


1976 KZ750-B1 PARTS DIAGRAM

FRAME/FRAME FITTINGS



1976 KZ750-B1 PARTS LIST

FRAME/FRAME FITTINGS

ITEM NAME	PART NUMBER	QUANTITY
LOCK-ASSY,STEERING (Ref # 2)	27016-5009	1
LOCK-ASSY,STEERING (Ref # 2)	27016-5009	1
SCREW-TAPPING (Ref # 3)	92008-007	1
WASHER (Ref # 4)	92097-003	1
CAP,STEERING LOCK (Ref # 5)	11012-1134	1
SPRING-STEERING LOCK (Ref # 6)	27032-001	1
NUT,8MM (Ref # 7)	311B0800	6
NUT,8MM (Ref # 7)	311B0800	4
WASHER SPRING 8MM (Ref # 8)	461F0800	10
WASHER SPRING 8MM (Ref # 8)	461F0800	12
WASHER PLAIN 8MM (Ref # 9)	411B0800	6
WASHER PLAIN 8MM (Ref # 9)	411B0800	4
PLATE,ENGINE HEAD,L.H (Ref # 10)	32030-061	1
PLATE,ENG FITTING,R.H (Ref # 10-1)	32030-071	1
PLATE,ENGINE HEAD,R.H (Ref # 11)	32030-054	1
PLATE,ENG HEAD FITT L (Ref # 11-1)	32030-070	1
REFLECTOR,REFLEX (Ref # 12)	28012-016	2
DAMPER RUBBER,REFLECT (Ref # 13)	92094-011	2
DAMPER RUBBER,FL TANK (Ref # 14)	92075-125	2
WASHER-PL-10.5X26X2.3 (Ref # 15)	92022-044	2
BALL STEEL 1/4' (Ref # 16)	600A0800	39
RACE,STRNG STM BRNG (Ref # 17)	92048-008	1
FRAME (Ref # 18)	32002-121	1
FRAME (Ref # 18)	32002-1016	1
RACE STRNG STEM BERNG (Ref # 19)	92048-006	1
CONE,STRNG STM BRNG (Ref # 20)	92047-011	1
CAP, STEERING STEM (Ref # 21)	46098-016	1
NUT STEERING STEM LCK (Ref # 22)	92090-007	1
WASHER,WAVE (Ref # 23)	46100-003	1

1976 KZ750-B1 PARTS LIST

FRAME/FRAME FITTINGS

ITEM NAME	PART NUMBER	QUANTITY
WASHER,STEERG STM HD (Ref # 24)	92022-230	1
BOLT,STEERG STEM HEAD (Ref # 25)	92007-031	1
BOLT (Ref # 26)	92003-214	1
BOLT,HEX HEAD,8X59 (Ref # 26-1)	110G0859	2
BOLT FLANGED 8X55 (Ref # 27)	92001-1398	2
DAMPER RUBBER,FL TK (Ref # 28)	92075-274	1
BOLT (Ref # 29)	92003-215	1
BOLT,10X45 (Ref # 29-1)	92001-1182	2
BOLT (Ref # 30)	92003-185	1
PLUG,FRAME RUBBER (Ref # 31)	32112-008	2
BOLT (Ref # 32)	92003-186	1
BOLT,FLANGED,8X35 (Ref # 33)	92001-1577	4
GROMMET (Ref # 34)	92071-056	8
WASHER SPRING 10MM (Ref # 35)	461F1000	5
NUT,LOCK,10MM (Ref # 36)	92019-021	3
PLATE,ENG FIT,RR R.H (Ref # 37)	32030-049	1
COLLAR (Ref # 38)	92027-246	1
COLLAR (Ref # 39)	92027-245	1
PLATE,ENG FIT,RR L.H (Ref # 40)	32030-048	1
PLATE,REAR ENG MOUNT (Ref # 40)	13169-1048	1
BOLT,FLANGED,10X325 (Ref # 41)	92001-1654	1
BOLT,HEX HEAD,10X50 (Ref # 42)	92001-1254	1
BOLT,HEX HEAD,8X59 (Ref # 43)	110G0859	1
BOLT FLANGED,8X70 (Ref # 44)	92001-1583	1
PLATE,ENG FIT,FRONT (Ref # 45)	32030-047	1
NUT (Ref # 46)	92016-055	2
BOLT,FLANGED,10X70 (Ref # 47)	92001-1618	1