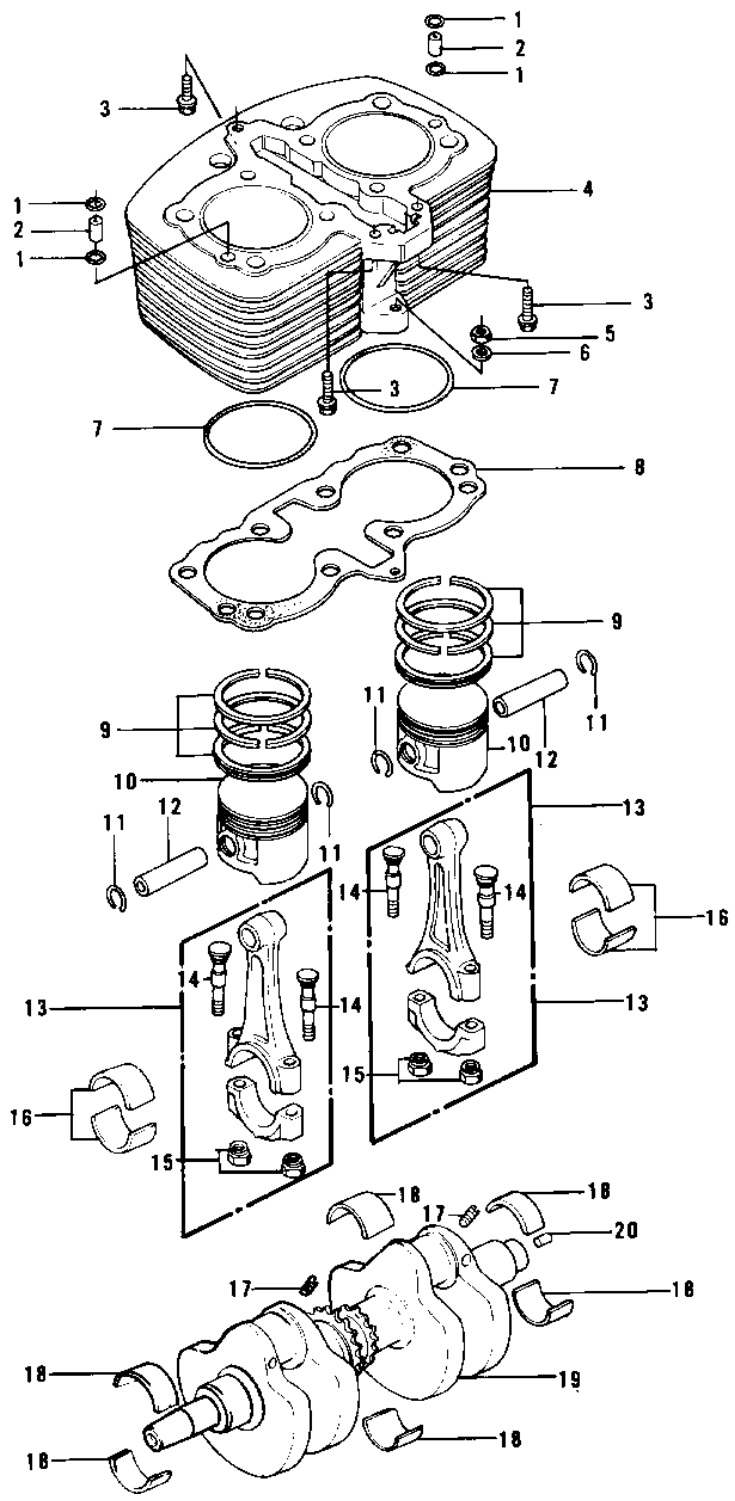


1976 KZ750-B1 PARTS DIAGRAM

CYLINDER/PISTONS/CRANKSHAFT



*C
102

1976 KZ750-B1 PARTS LIST

CYLINDER/PISTONS/CRANKSHAFT

ITEM NAME	PART NUMBER	QUANTITY
"O" RING (Ref # 1)	92055-094	4
PIN,DOWEL (Ref # 2)	92042-039	2
BOLT, HEX HEAD, 6X34 (Ref # 3)	92003-159	3
CYLINDER,BARREL (Ref # 4)	11005-150-2H	1
NUT 6MM (Ref # 5)	311B0600	1
WASHER PLAIN 6MM (Ref # 6)	410B0600	1
"O" RING (Ref # 7)	92055-081	2
GASKET,CYLINDER BASE (Ref # 8)	11009-042	1
RING SET,PISTON (Ref # 9)	13008-055	2
RING SET,0.020"O.S (Ref # 9)	13025-059	(2
RING SET,0.040"O.S (Ref # 9)	13024-059	(2
PISTON,STD (Ref # 10)	13001-1086	2
PISTON,0.50 O/S (Ref # 10)	13029-1039	(2
PISTON,1.00 O/S (Ref # 10)	13027-1038	(2
CIRCLIP PISTON PIN (Ref # 11)	92036-008	4
PIN-PISTON (Ref # 12)	13002-031	2
UNAVAILABLE IN PRICE BOOK (Ref # 13)	*13032-051-II	2
UNAVAILABLE IN PRICE BOOK (Ref # 13)	*13032-051-II	2
UNAVAILABLE IN PRICE BOOK (Ref # 13)	*13032-051-JJ	2
UNAVAILABLE IN PRICE BOOK (Ref # 13)	*13032-051-JJ	2
UNAVAILABLE IN PRICE BOOK (Ref # 13)	*13032-051-KK	2
UNAVAILABLE IN PRICE BOOK (Ref # 13)	*13032-051-KK	2
UNAVAILABLE IN PRICE BOOK (Ref # 13)	*13032-051-LL	2
UNAVAILABLE IN PRICE BOOK (Ref # 13)	*13032-051-LL	2
BOLT,CONNECTING ROD (Ref # 14)	92001-170	4
NUT,FLANGED,8MM (Ref # 15)	92015-1311	4
METAL,CON ROD BRG (Ref # 16)	13034-043	4
METAL,CON ROD BRG (Ref # 16)	13034-045	4
METAL,CON ROD BRG (Ref # 16)	13034-046	4

1976 KZ750-B1 PARTS LIST

CYLINDER/PISTONS/CRANKSHAFT

ITEM NAME	PART NUMBER	QUANTITY
SCREW (Ref # 17)	291H0812	2
METAL,CRANK BRG (Ref # 18)	13034-044	6
CRANK SHAFT ASSY (Ref # 19)	13031-1002	1
CRANKSHAFT ASSY (Ref # 19)	13031-1005	1
PIN,DOWEL,4X8 (Ref # 20)	551A0408	1
PIN-SPRING,4X8 (Ref # 20)	555A0408	1