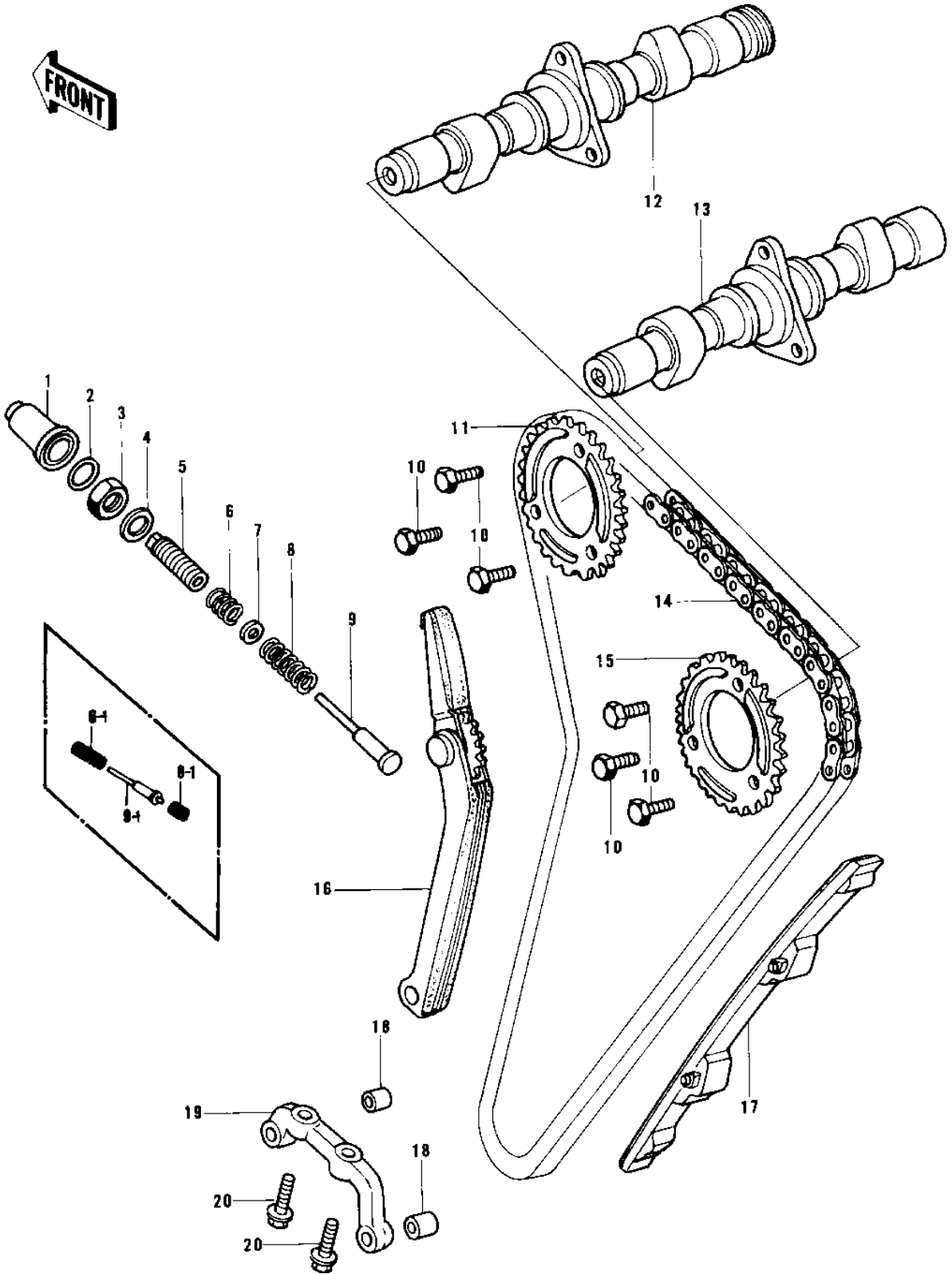


1976 KZ750-B1 PARTS DIAGRAM

CAMSHAFTS/CHAIN/TENSIONER



1
-

10

1976 KZ750-B1 PARTS LIST

CAMSHAFTS/CHAIN/TENSIONER

ITEM NAME	PART NUMBER	QUANTITY
CAP,CHN TENSIONER (Ref # 1)	12064-003	1
"O" RING (Ref # 2)	92055-095	1
NUT 18MM (Ref # 3)	92015-019	1
WASHER,PLAIN (Ref # 4)	92022-320	1
BOLT (Ref # 5)	92003-188	1
BOLT,PUSH ROD (Ref # 5)	92001-1009	1
SPRING (Ref # 6)	92081-144	1
SPRING (Ref # 6-1)	92081-1008	1
WASHER,PLAIN (Ref # 7)	92022-312	1
SPRING,CHN TENSIONER (Ref # 8)	92081-143	1
SPRING,PUSH ROD (Ref # 8-1)	92081-1007	1
ROD,PUSH (Ref # 9)	12054-004	1
ROD,PUSH (Ref # 9-1)	13116-1001	1
BOLT,SPROCKET FITTING (Ref # 10)	92003-208	6
BOLT,SPROCKET FITTING (Ref # 10)	92003-208	6
SPROCKET,CAM SFT,EXH (Ref # 11)	12046-007	1
CAMSHAFT,EXHAUST (Ref # 12)	12044-020	1
CAM SHAFT,INLET (Ref # 13)	12044-010	1
CHAIN,CAM (Ref # 14)	21070-011	1
SPROCKET,CAM SFT,IN (Ref # 15)	12046-006	1
TENSIONER ASSY,CAM (Ref # 16)	12048-005	1
SLIPPER,CAM CHAIN (Ref # 17)	12053-015	1
PIN,DOWEL,10X32 (Ref # 18)	551A1032	2
HOLDER (Ref # 19)	14018-006	1
BOLT (Ref # 20)	92003-202	2