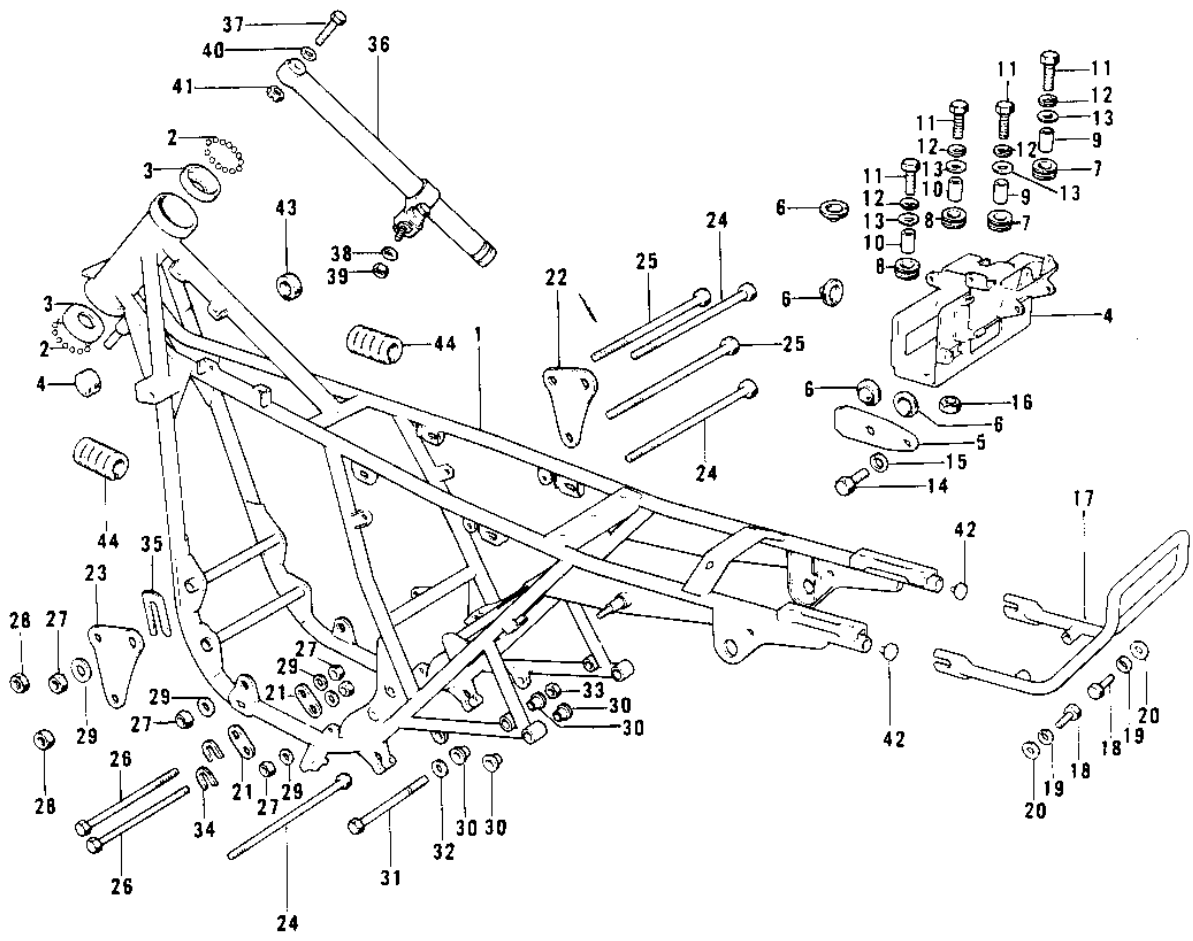


# 1972 Mach IV PARTS DIAGRAM

FRAME/FRAME FITTINGS (H2-B/C)



**(H2-B/C)**

# 1972 Mach IV PARTS LIST

## FRAME/FRAME FITTINGS (H2-B/C)

ITEM NAME	PART NUMBER	QUANTITY
FRAME (Ref # 1)	32002-080	1
FRAME (Ref # 1)	32002-107	1
BALL STEEL 1/4' (Ref # 2)	600A0800	38
RACE STRNG STEM BERNG (Ref # 3)	92048-006	2
CASE,TOOL (Ref # 4)	32099-014	1
BAND-BATTERY (Ref # 5)	32100-014	1
DAMPER RUBBER (Ref # 6)	92075-078	6
DAMPER RUBBER,CASE (Ref # 7)	92075-222	2
DAMPER RUBBER (Ref # 8)	92075-076	2
COLLAR 6.8X10X10.5 (Ref # 9)	92027-120	2
COLLAR,6.8X10X8.5 (Ref # 10)	92027-129	2
BOLT 6X22 (Ref # 11)	112B0622	4
WASHER SPRING 6MM (Ref # 12)	461F0600	4
WASHER 6.5X20X1.6T (Ref # 13)	92022-125	4
BOLT-UPSET 6X14 (Ref # 14)	112B0614	1
WASHER PLAIN 6MM (Ref # 15)	410B0600	1
NUT 6MM (Ref # 16)	311B0600	1
STAY,REAR FENDER (Ref # 17)	35032-025	1
BOLT,8X20 (Ref # 18)	115G0820	2
WASHER SPRING 8MM (Ref # 19)	461F0800	2
WASHER PLAIN 8MM (Ref # 20)	411B0800	2
PLATE REAR ENG HOLDER (Ref # 21)	32030-016	2
PLATE,ENGINE R.H (Ref # 22)	32030-042	1
PLATE,ENGINE L.H (Ref # 23)	32030-043	1
BOLT-ENG MOUNT,10X274 (Ref # 24)	92091-024	3
BOLT-ENG MOUNT,8X270 (Ref # 25)	92091-021	2
BOLT,HEX HEAD,10X125 (Ref # 26)	92001-1248	2
NUT,10MM (Ref # 27)	92015-1429	5
NUT,LOCK,8MM (Ref # 28)	92015-1124	2

# 1972 Mach IV PARTS LIST

## FRAME/FRAME FITTINGS (H2-B/C)

ITEM NAME	PART NUMBER	QUANTITY
WASHER PLAIN 10MM (Ref # 29)	410B1000	5
BUSHING,MUFFLER FITT (Ref # 30)	92092-010	8
BOLT HEX HEAD 10X56 (Ref # 31)	113N1056	2
WASHER-HANDLEBAR FIT (Ref # 32)	92022-196	2
NUT,LOCK,10MM (Ref # 33)	92019-021	2
SHIM-ENG FIT RR,0.5MM (Ref # 34)	92025-048	AR
SHIM-ENG FIT RR,0.8MM (Ref # 34)	92025-049	AR
SHIM-ENG FIT RR,1.0MM (Ref # 34)	92025-050	AR
SHIM-ENG FIT RR,1.6MM (Ref # 34)	92025-051	AR
SHIM-ENG FIT RR,2.0MM (Ref # 34)	92025-052	AR
SHIM-ENG FIT FR,0.5MM (Ref # 35)	92025-053	AR
SHIM-ENG FIT FR,0.8MM (Ref # 35)	92025-054	AR
SHIM-ENG FIT FR,1.0MM (Ref # 35)	92025-055	AR
SHIM-ENG FIT FR,1.6MM (Ref # 35)	92025-056	AR
SHIM-ENG FIT FR,2.0MM (Ref # 35)	92025-057	AR
SHIM-ENG FIT FR,2.3MM (Ref # 35)	92025-058	AR
OIL DAMPER-STEERING (Ref # 36)	46117-006	1
BOLT-SMALL-UPSET,8X30 (Ref # 37)	115G0830	1
WASHER SPRING 8MM (Ref # 38)	461F0800	1
NUT,LOCK,8MM (Ref # 39)	92015-1124	1
WASHER PLAIN 8MM (Ref # 40)	411B0800	1
NUT,8MM (Ref # 41)	311B0800	1
PLUG (Ref # 42)	32112-006	2
DAMPER RUBBER (Ref # 43)	92075-044	2
DAMPER RUBBER (Ref # 44)	92075-084	2