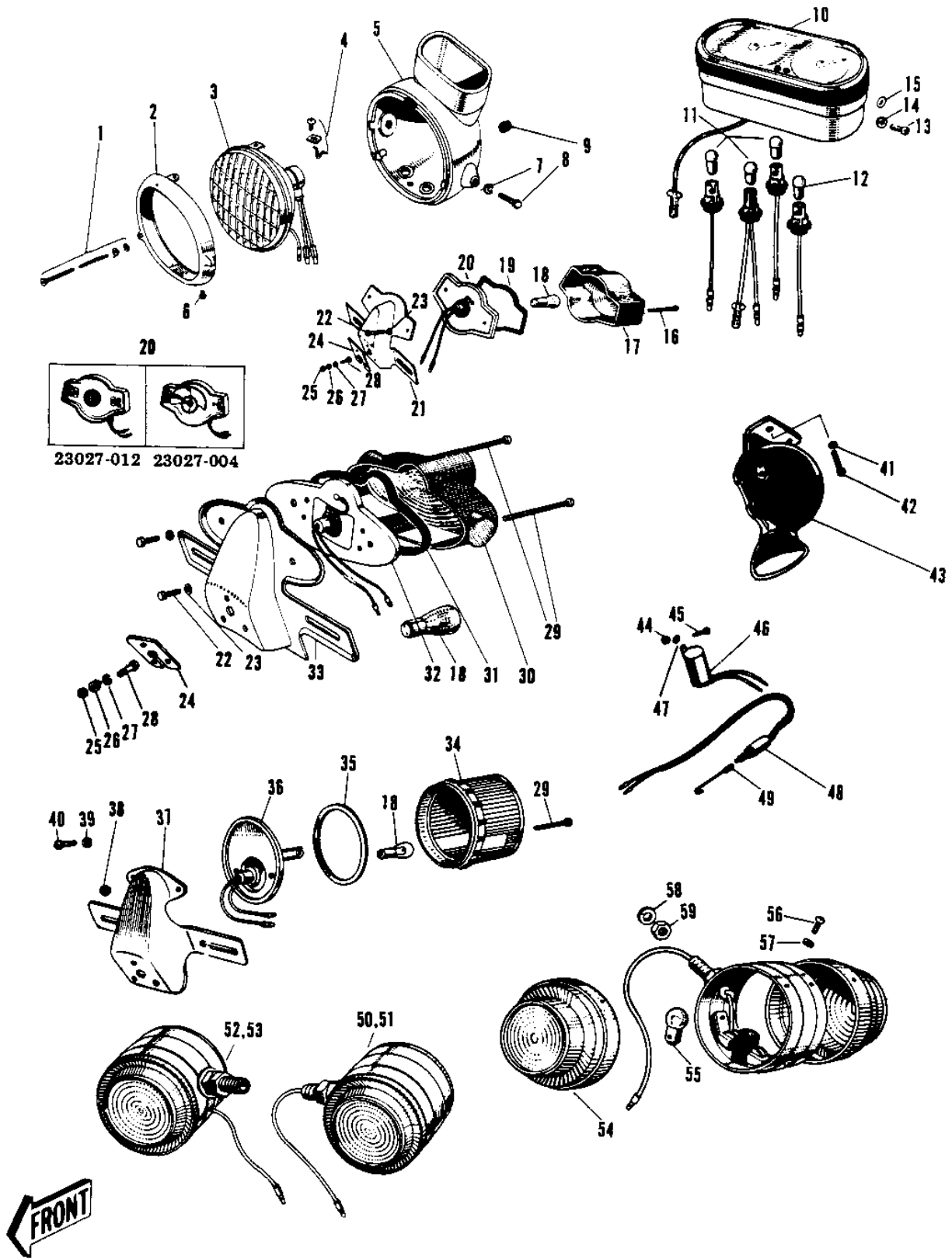


## 1969 W1SS PARTS DIAGRAM

METERS/LIGHTS (EARLY PRODUCTION)



## 1969 W1SS PARTS LIST

METERS/LIGHTS (EARLY PRODUCTION)

ITEM NAME	PART NUMBER	QUANTITY
LAMP ASSY HEAD BLACK (Ref # 1~6)	23001-021-10	1
LAMP ASSY HEAD C.RED (Ref # 1~6)	23001-021-24	1
UNAVAILABLE IN PRICE BOOK (Ref # 1~6)	23001-21-27	1
SCREW SET FOCUS ADJST (Ref # 1)	23013-002	1
RIM HEAD LAMP (Ref # 2)	23006-017	1
SEALED BEAM UNIT (Ref # 3)	23007-025	1
SCREW SET LAMP MOUNT (Ref # 4)	23015-002	1
BODY HEAD LAMP BLACK (Ref # 5)	23005-017-10	1
BODY HEAD LAMP C.RED (Ref # 5)	23005-017-24	1
BODY HEAD LAMP C.BLUE (Ref # 5)	23005-017-27	1
SCREW OVL CNTSNK 5X8 (Ref # 6)	222E0508	1
WASHER SPRING 10MM (Ref # 7)	461F1000	2
BOLT,HEX HEAD,10X25 (Ref # 8)	92007-045	1
GROMMET 13MM (Ref # 9)	850A1301	1
SPEEDOMETER ASSY MPH (Ref # 10~12)	25003-005	1
UNAVAILABLE IN PRICE BOOK (Ref # 10~12)	25003-003	1
BULB 12V 3W (Ref # 11)	92069-018	1
BULB 12V 1.5W (Ref # 12)	92069-017	1
SCREW PAN HEAD 5X8 (Ref # 13)	220E0508	1
WASHER SPRING 5MM (Ref # 14)	461F0500	2
WASHER PLAIN 5MM (Ref # 15)	410B0500	1
LAMP ASSY TAIL (Ref # 16~23)	23025-019	1
SCREW OVL CNTSNK 3X60 (Ref # 16)	222E0360	1
LENS TAIL LAMP (Ref # 17)	23026-017	1
BULB,12V 32/3CP (Ref # 18)	92069-059	1
GASKET TAIL LAMP LENS (Ref # 19)	23028-007	1
SOCKET TAIL LAMP (Ref # 20)	23027-004	1
SOCKET TAIL LAMP (Ref # 20)	23027-012	1
BKT LICENSE PLT (Ref # 21)	23036-003	1

## 1969 W1SS PARTS LIST

METERS/LIGHTS (EARLY PRODUCTION)

ITEM NAME	PART NUMBER	QUANTITY
BOLT HEX HEAD 5X10 (Ref # 22)	110N0510	1
DAMPER TAIL LAMP SHCK (Ref # 24)	35039-001	1
DAMPER-TAIL LAMP SHCK (Ref # 24)	35039-005	1
NUT 6MM (Ref # 25)	312B0600	1
NUT 6MM (Ref # 26)	311B0600	1
WASHER SPRING 6MM (Ref # 27)	461F0600	1
BOLT-UPSET (Ref # 28)	112G0618	1
BOLT 6X35 (Ref # 28)	110R0635	1
LAMP ASSY TAIL (Ref # 18,22,)	23025-027	1
SCREW PAN HEAD 4X50 (Ref # 29)	220E0450	1
LENS TAIL LAMP (Ref # 30)	23026-010	1
GASKET TAIL LAMP (Ref # 31)	23028-008	1
SOCKET TAIL LAMP (Ref # 32)	23027-009	1
BKT LICENSE PLT (Ref # 33)	23036-002	1
WASHER SPRING 8MM (Ref # 41)	461F0800	1
BOLT-SMALL-UPSET,8X16 (Ref # 42)	115G0816	2
HORN (Ref # 43)	27003-011	1
6MM NUT (Ref # 44)	310B0600	1
RELAY TURN SIGNAL (Ref # 46)	27002-004	1
RELAY TURN SIGNAL (Ref # 46)	27002-008	1
WASHER PLAIN 6MM (Ref # 47)	410B0600	1
SWITCH BRAKE LAMP (Ref # 48)	27010-006	1
SPRING BRAKE LAMP SW (Ref # 49)	27011-009	1
LAMP FRNT TURN SIG RH (Ref # 50)	23040-013	1
LAMP FRNT TURN SIG LH (Ref # 51)	23042-012	1
LAMP REAR TURN SIG RH (Ref # 52)	23043-011	1
LAMP REAR TURN SIG LH (Ref # 53)	23044-009	1
LENS TURN SIGNAL LAMP (Ref # 54)	23048-004	1
BULB 12V 8W (Ref # 55)	92069-019	1

## 1969 W1SS PARTS LIST

METERS/LIGHTS (EARLY PRODUCTION)

ITEM NAME	PART NUMBER	QUANTITY
SCREW PAN HEAD 3X8 (Ref # 56)	220E0308	1
WASHER SPRING 3MM (Ref # 57)	461F0300	1
NUT 10MM (Ref # 59)	315B1000	1