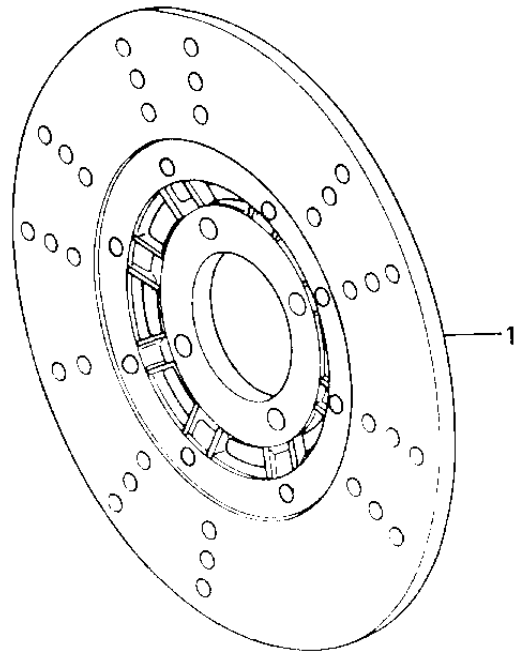
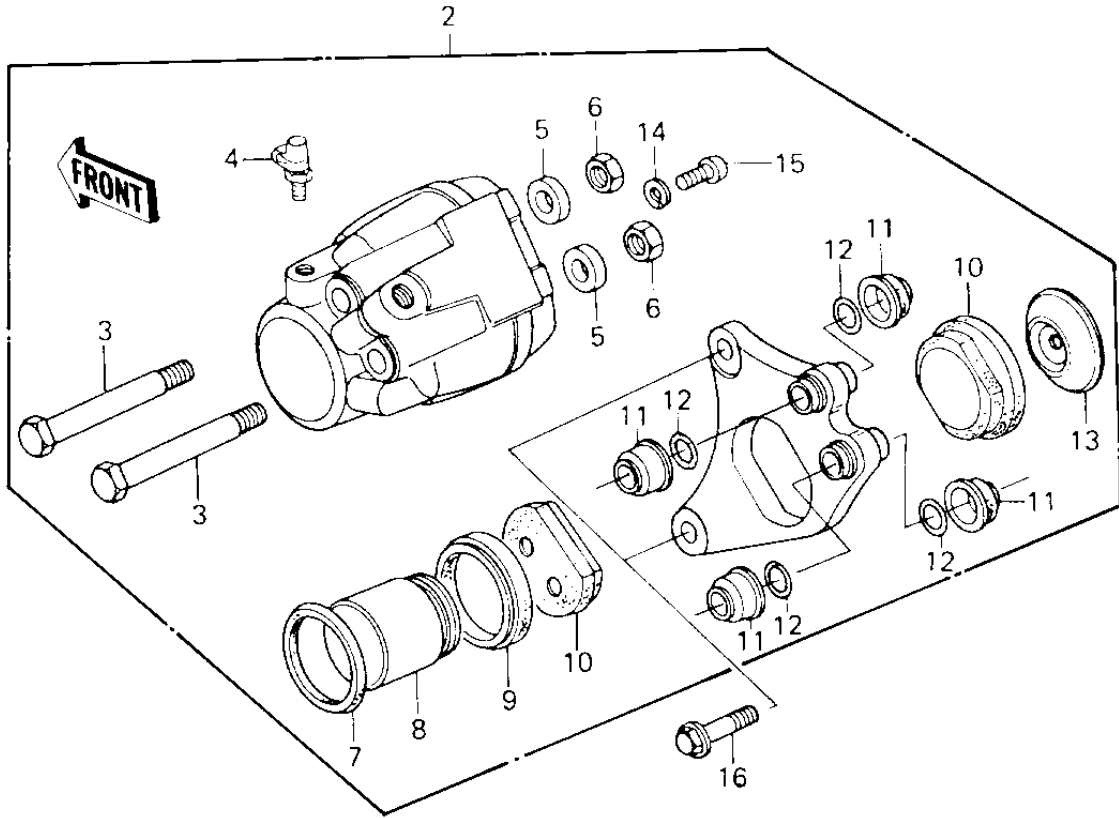


# 1980 KZ650-F1 PARTS DIAGRAM

FRONT BRAKE



I

# 1980 KZ650-F1 PARTS LIST

## FRONT BRAKE

| ITEM NAME                       | PART NUMBER | QUANTITY |
|---------------------------------|-------------|----------|
| DISC PLATE,FRONT BRAK (Ref # 1) | 41080-1022  | 1        |
| CALIPER ASSY,L.H, (Ref # 2)     | 43041-1024  | 1        |
| BOLT (Ref # 3)                  | 43045-006   | 2        |
| BLEEDER SET (Ref # 4)           | 43085-001   | 1        |
| PLUG (Ref # 5)                  | 43088-002   | 2        |
| NUT 10MM (Ref # 6)              | 315B1000    | 2        |
| RING,PISTON SEAL (Ref # 7)      | 43049-002   | 1        |
| PISTON,BRAKE,42M/M (Ref # 8)    | 43020-1012  | 1        |
| DUST SEALD,RUBBER (Ref # 9)     | 43054-003   | 1        |
| PAD SET (Ref # 10)              | 43082-1001  | 1        |
| DUST SHILD,SHAFT (Ref # 11)     | 43052-005   | 4        |
| "O" RING (Ref # 12)             | 43053-006   | 4        |
| SPACER (Ref # 13)               | 43040-004   | 1        |
| WASHER SPRING 6MM (Ref # 14)    | 461F0600    | 1        |
| SCREW PAN HEAD 6X12 (Ref # 15)  | 220B0612    | 1        |
| BOLT,HEX HEAD,10X38 (Ref # 16)  | 92001-1293  | 2        |