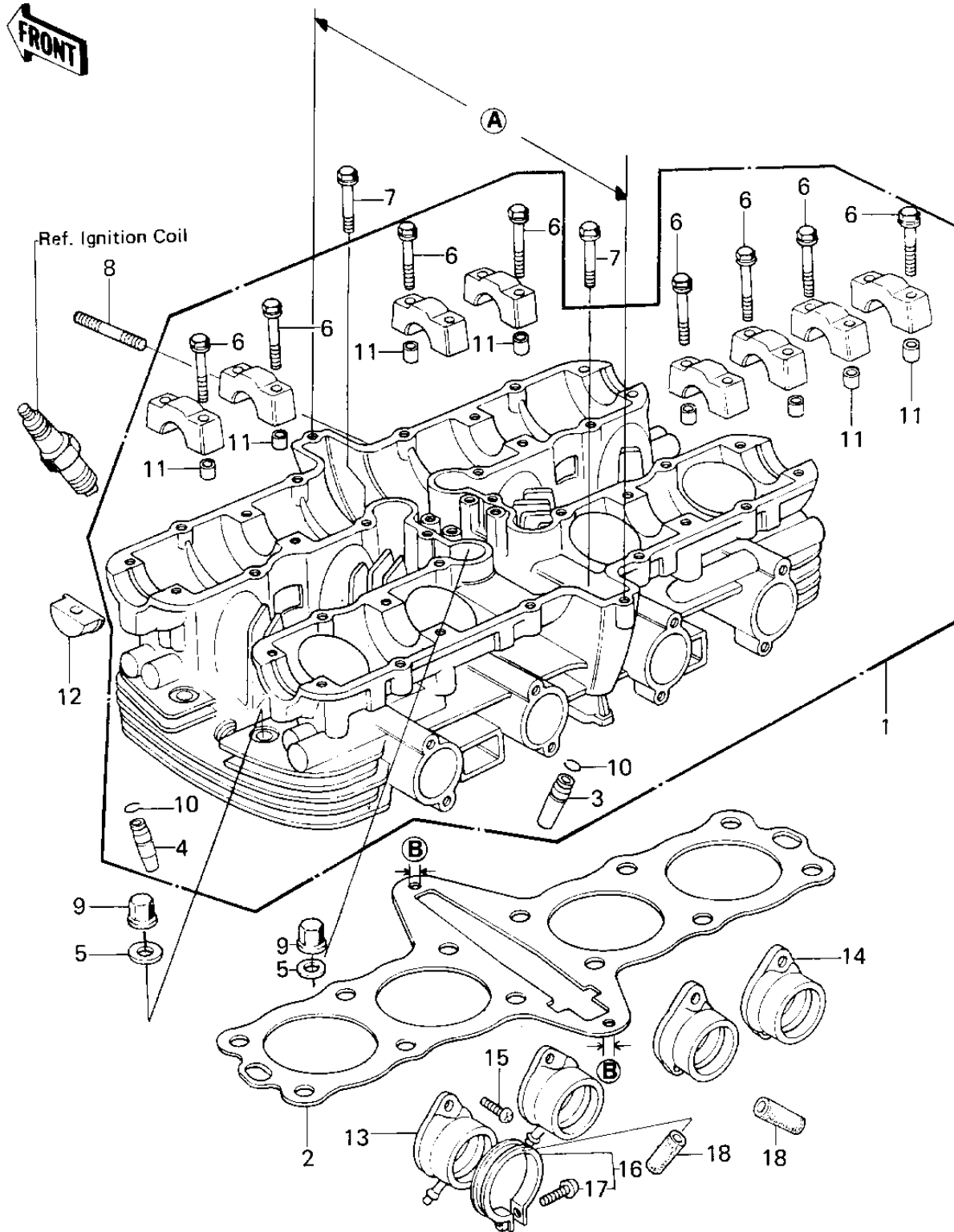


1980 KZ650-F1 PARTS DIAGRAM

CYLINDER HEAD



1980 KZ650-F1 PARTS LIST

CYLINDER HEAD

| ITEM NAME | PART NUMBER | QUANTITY |
|----------------------------------|-------------|----------|
| HEAD ASSY,CYLINDER (Ref # 1) | 11002-1014 | 1 |
| HEAD-ASSY-CYLINDER,BA (Ref # 1) | 11002-1075 | 1 |
| GASKET-HEAD,CYLINDER (Ref # 2) | 11004-1107 | 1 |
| GASKET-HEAD,CYLINDER (Ref # 2) | 11004-1107 | 1 |
| GUIDE,INLET VALVE (Ref # 3) | 12013-009 | 4 |
| GUIDE,EXHAUST VALVE (Ref # 4) | 49002-1002 | 4 |
| GUIDE,EXHAUST VALVE (Ref # 4) | 49002-1002 | 4 |
| WASHER PLAIN 10MM (Ref # 5) | 411B1000 | 12 |
| BOLT,FLANGED,6X38 (Ref # 6) | 92001-1105 | 16 |
| BOLT,6X43 (Ref # 7) | 92002-1881 | 2 |
| BOLT,FLANGED,8X43 (Ref # 7) | 92001-1445 | 2 |
| BOLT,FLANGED,8X43 (Ref # 7) | 92001-1445 | 2 |
| STUD,6X27 (Ref # 8) | 92004-066 | 8 |
| NUT,CYLINDER HEAD (Ref # 9) | 92015-076 | 12 |
| CIRCLIP-VALVE (Ref # 10) | 92036-023 | 8 |
| PIN-DOWEL (Ref # 11) | 92042-007 | 16 |
| PLUG,CAMSHAFT,11.35X1 (Ref # 12) | 92066-1111 | 4 |
| HOLDER,CARB,L.H. (Ref # 13) | 16065-046 | 2 |
| HOLDER,CARB,R.H (Ref # 14) | 16065-047 | 2 |
| SCREW PAN HEAD 6X18 (Ref # 15) | 220B0618 | 8 |
| CLAMP,CARBURETOR HLDR (Ref # 16) | 92037-178 | 4 |
| SCREW-PAN-CROS,5X25 (Ref # 17) | 220B0525 | 4 |
| RUBBER PLUG (Ref # 18) | 92068-006 | 2 |