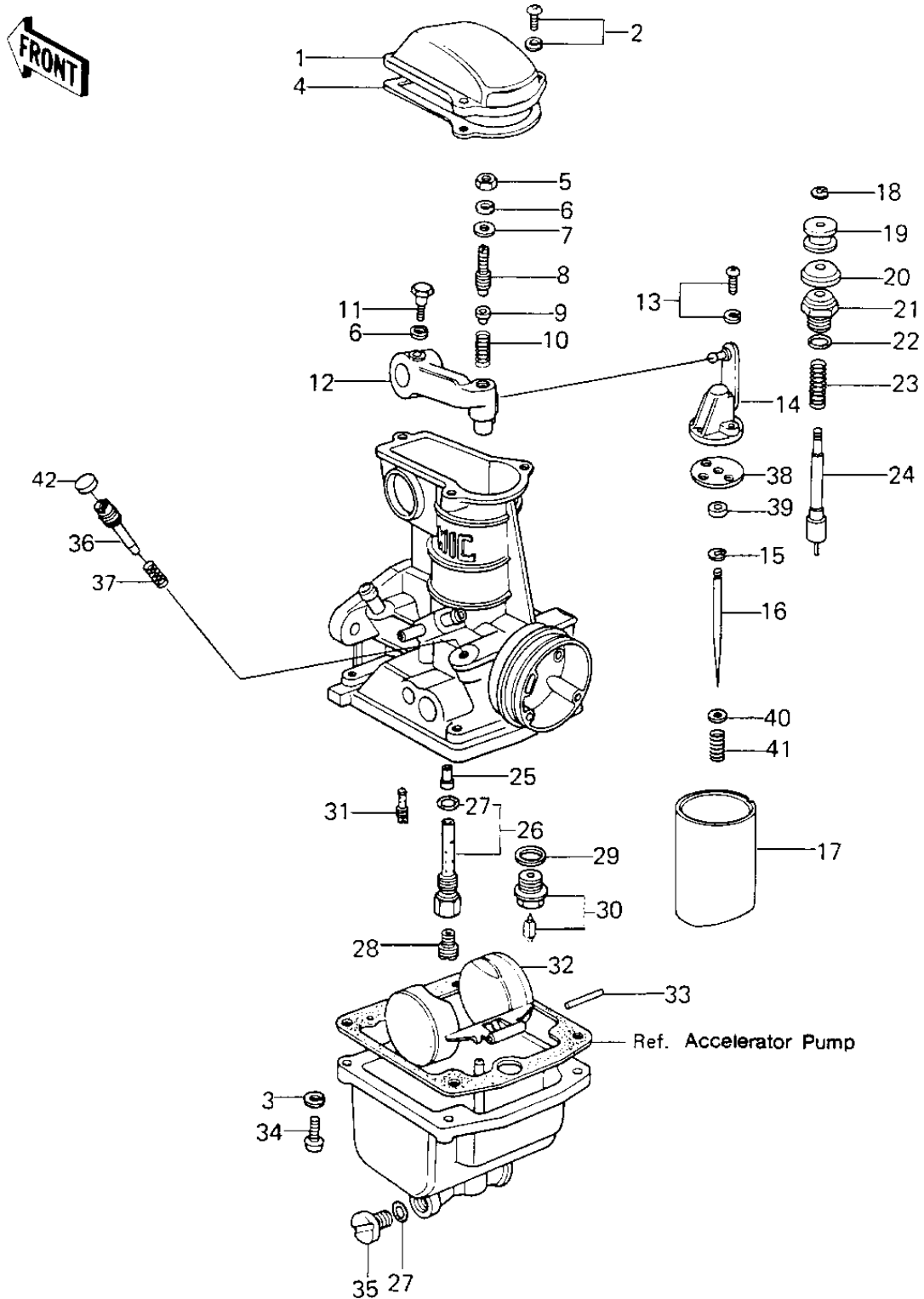


# 1980 LTD PARTS DIAGRAM

## CARBURETOR PARTS



# 1980 LTD PARTS LIST

## CARBURETOR PARTS

ITEM NAME	PART NUMBER	QUANTITY
TOP,MIXING CHAMBER (Ref # 1)	16005-027	4
SCREW-PAN-WS-CROS (Ref # 2)	223B0414	12
WASHER SPRING 4MM (Ref # 3)	461F0400	16
GASKET,CHAMBER TOP (Ref # 4)	16019-031	4
NUT,5MM (Ref # 5)	16003-013	4
WASHER SPRING 5MM (Ref # 6)	461F0500	8
WASHER,PLAIN (Ref # 7)	16039-016	4
SCREW,SLOTTED (Ref # 8)	16046-012	4
SEAT,SPRING (Ref # 9)	16057-002	4
SPRING (Ref # 10)	16040-026	4
BOLT,HEX HEAD,5X14 (Ref # 11)	16067-006	4
LEVER,THROTTLE (Ref # 12)	39075-1001	4
SCREW,PAN HEAD,3X14 (Ref # 13)	16033-031	8
BRACKET,THROTTLE VALV (Ref # 14)	39184-1001	4
CIRCLIP (Ref # 15)	16008-010	4
JET NEEDLE,5CL30 (Ref # 16)	16009-1048	4
VALVE,THROTTLE,CA1.75 (Ref # 17)	16025-1025	4
CIRCLIP (Ref # 18)	16076-003	4
COLLAR (Ref # 19)	16073-014	4
CAP,STARTER PLUNGER (Ref # 20)	16039-015	4
CAP,STARTER PLUNGER (Ref # 21)	16012-015	4
"O" RING,9MM (Ref # 22)	670B1509	4
SPRING,STARTER PLUG (Ref # 23)	16013-008	4
PLUNGER,STARTER (Ref # 24)	16016-021	4
NEEDLE JET,AO-5 (Ref # 25)	16017-1034	4
PIPE,BLEED (Ref # 26)	49122-1006	4
"O" RING,MAIN JET COV (Ref # 27)	16038-016	8
MAIN JET,#A97.5R (Ref # 28)	92063-1035	4
MAIN JET,#A100 (Ref # 28)	92063-1033	4

# 1980 LTD PARTS LIST

## CARBURETOR PARTS

ITEM NAME	PART NUMBER	QUANTITY
MAIN JET,#A105R (Ref # 28)	92063-1042	4
MAIN JET NO 92.5R (Ref # 28)	92063-068	4
MAIN JET,#A95 (Ref # 28)	92063-1031	4
WASHER FLOAT VLV SEAT (Ref # 29)	16029-004	4
FLOAT VALVE ASSY (Ref # 30)	16030-1001	4
PILOT JET,#A15 (Ref # 31)	92064-1018	4
FLOAT (Ref # 32)	16031-031	4
FLOAT PIN (Ref # 33)	16032-003	4
SCREW PAN HEAD 4X16 (Ref # 34)	220B0416	16
SCREW,GUIDE (Ref # 35)	16049-007	4
SCREW,PILOT ADJUSTING (Ref # 36)	16014-1020	4
SPRING-THR STOP SCREW (Ref # 37)	16022-007	4
PLATE,JET NEEDLE (Ref # 38)	13169-1107	4
RING,JET NEEDLE (Ref # 39)	92027-1103	4
WASHER,THROTTLE VALVE (Ref # 40)	92022-1024	4
SPRING,JET NEEDLE (Ref # 41)	92081-1072	4
PLUG,PILOT SCREW (Ref # 42)	92066-1051	4