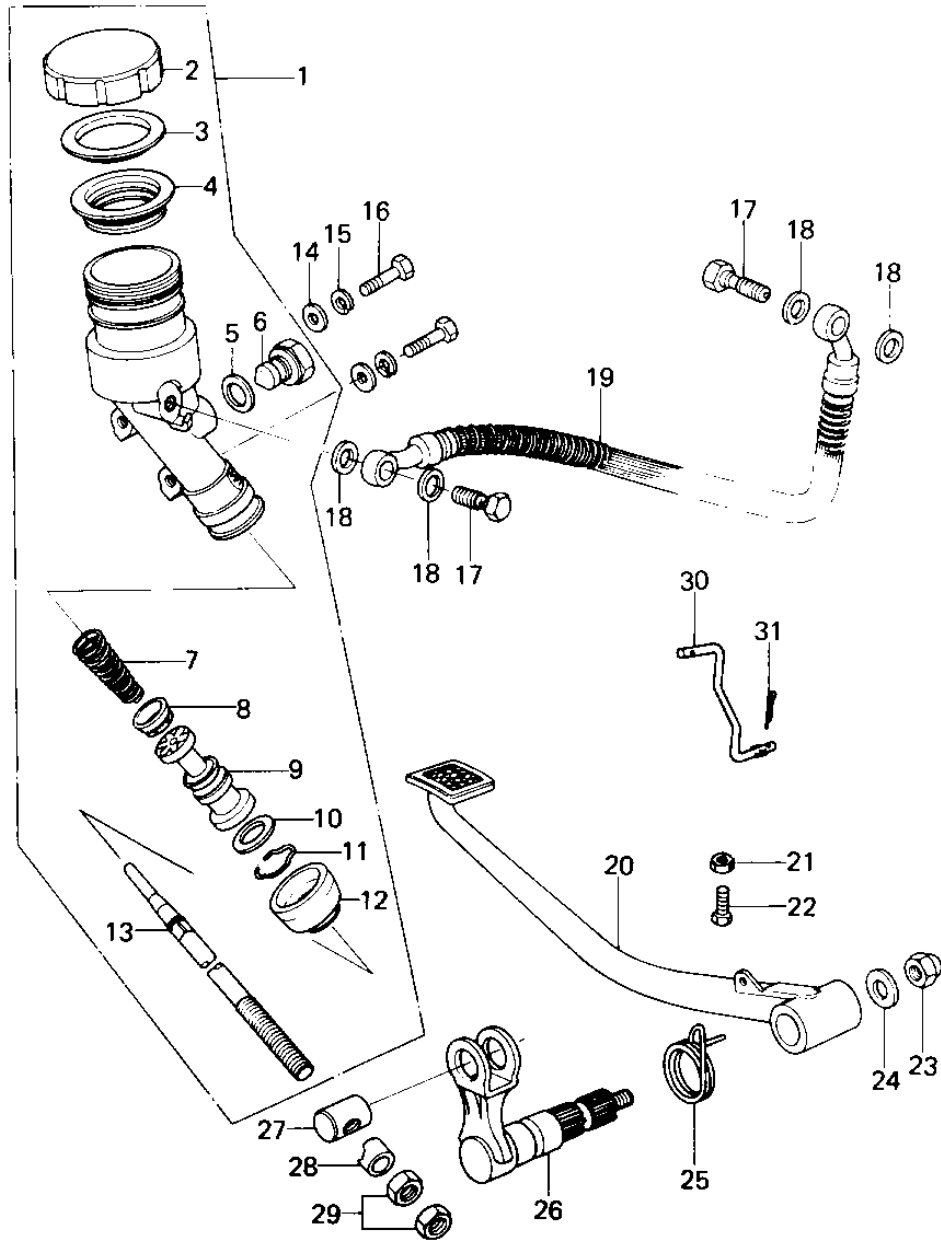


# 1978 SR PARTS DIAGRAM

REAR MASTER CYLINDER/BRAKE PEDAL



# 1978 SR PARTS LIST

## REAR MASTER CYLINDER/BRAKE PEDAL

ITEM NAME	PART NUMBER	QUANTITY
CYLINDER ASSY,M.REAR (Ref # 1)	43015-1005	1
CAP,OIL CUP (Ref # 2)	43026-004	1
PLATE-MASTER CYLINDER (Ref # 3)	43027-001	1
DIAPHRAGM (Ref # 4)	43028-003	1
'O'RING (Ref # 5)	43079-002	1
BOLT (Ref # 6)	92001-1073	1
SPRING ASSY-RETURN (Ref # 7)	43018-001	1
CUP-PRIMARY (Ref # 8)	43019-001	1
PISTON ASSY (Ref # 9)	43020-1007	1
STOPPER,PISTON (Ref # 10)	43022-002	1
DUST COVER (Ref # 11)	43024-003	1
DUST COVER (Ref # 12)	43024-003	1
ROD,BRAKE (Ref # 13)	43011-1004	1
WASHER PLAIN 8MM (Ref # 14)	411B0800	2
WASHER SPRING 8MM (Ref # 15)	461F0800	2
BOLT-SMALL-UPSET,8X30 (Ref # 16)	115G0830	2
BOLT,OIL,L=23 (Ref # 17)	92002-1888	2
WASHER-OIL BOLT (Ref # 18)	43067-001	4
HOSE,REAR MASTER (Ref # 19)	43059-1006	1
PEDAL BRAKE (Ref # 20)	43001-1009	1
NUT 6MM (Ref # 21)	311B0600	1
BOLT-UPSET,6X20 (Ref # 22)	112G0620	1
NUT,CAP AND LOCK,8MM (Ref # 23)	92019-013	1
WASHER,8.5X20X1.6 (Ref # 24)	92022-1561	1
SPRING,BRAKE PEDAL (Ref # 25)	92081-1015	1
SHAFT,BRAKE PEDAL (Ref # 26)	43004-1002	1
PIN,BRAKE ROD (Ref # 27)	92043-1003	1
COLLAR,BRAKE ROD (Ref # 28)	92027-1019	1
NUT 10MM (Ref # 29)	315B1000	2

# 1978 SR PARTS LIST

## REAR MASTER CYLINDER/BRAKE PEDAL

ITEM NAME	PART NUMBER	QUANTITY
HOOK,BRAKE SWITCH (Ref # 30)	27012-1003	1
PIN COTTER 1.6X10 (Ref # 31)	550D1610	1