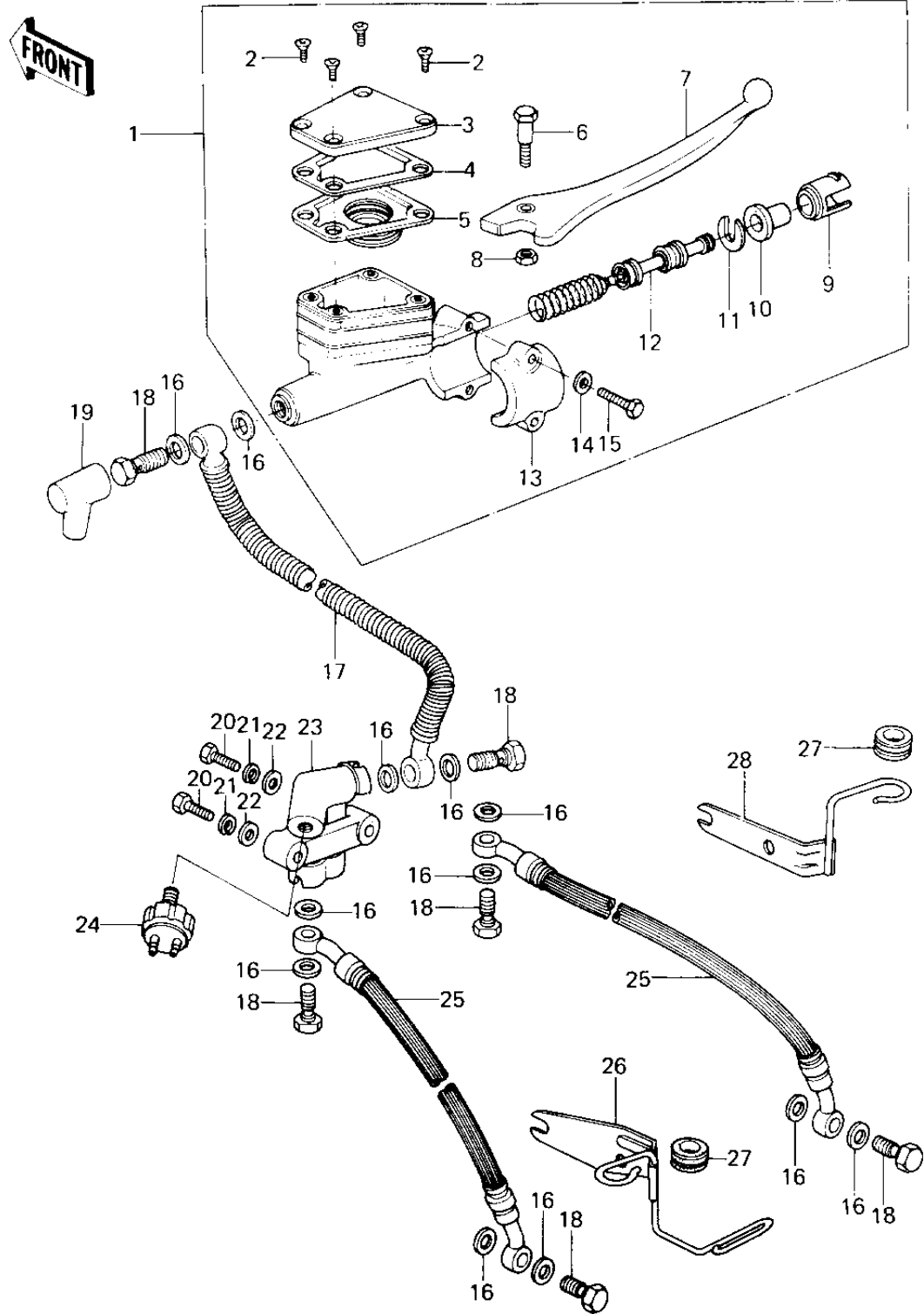


1979 SR PARTS DIAGRAM

FRONT MASTER CYLINDER



1979 SR PARTS LIST

FRONT MASTER CYLINDER

ITEM NAME	PART NUMBER	QUANTITY
CYLINDER ASSY,MSTR,FR (Ref # 1)	43015-1009	1
SCREW,COUNTERSUNK HED (Ref # 2)	92001-1055	1
CAP,OIL CUP (Ref # 3)	43026-1003	1
PLATE,DIAPHRAGM (Ref # 4)	43027-1002	1
DIAPHRAGM (Ref # 5)	43028-1002	1
BOLT,CLUTCH LEV FITT (Ref # 6)	92001-1056	1
LEVER,FRONT BRAKE (Ref # 7)	46092-1002	1
NUT 6MM (Ref # 8)	312B0600	1
LINER,PISTON (Ref # 9)	14008-1007	1
DUST COVER (Ref # 10)	49016-1010	1
STOPER,PISTON (Ref # 11)	43022-1001	1
PISTON-COMP-BRAKE (Ref # 12)	43020-1023	1
HOLDER,MASTER CYLINDR (Ref # 13)	43034-1001	1
WASHER PLAIN 6MM (Ref # 14)	411B0600	2
BOLT-UPSET (Ref # 15)	112G0625	1
WASHER-OIL BOLT (Ref # 16)	43067-001	1
HOSE M/C BRAKE,L=370 (Ref # 17)	43059-1011	1
BOLT,OIL,L=23 (Ref # 18)	92002-1888	1
BOOT,DUST (Ref # 19)	49006-1041	1
BOLT,HEX HEAD,6X45 (Ref # 20)	110N0645	1
WASHER SPRING 6MM (Ref # 21)	461F0600	1
JOINT,FOUR WAY (Ref # 23)	43075-002	1
SWITCH-FRONT BRAKE (Ref # 24)	43065-001	1
HOSE,CALIPER BRAKE (Ref # 25)	43059-033	1
BRACKET (Ref # 26)	11034-1041	1
DAMPER RUBBER,CYL HSE (Ref # 27)	43064-006	1
BRACKET,BRAKE HOSE (Ref # 82)	43063-008	1