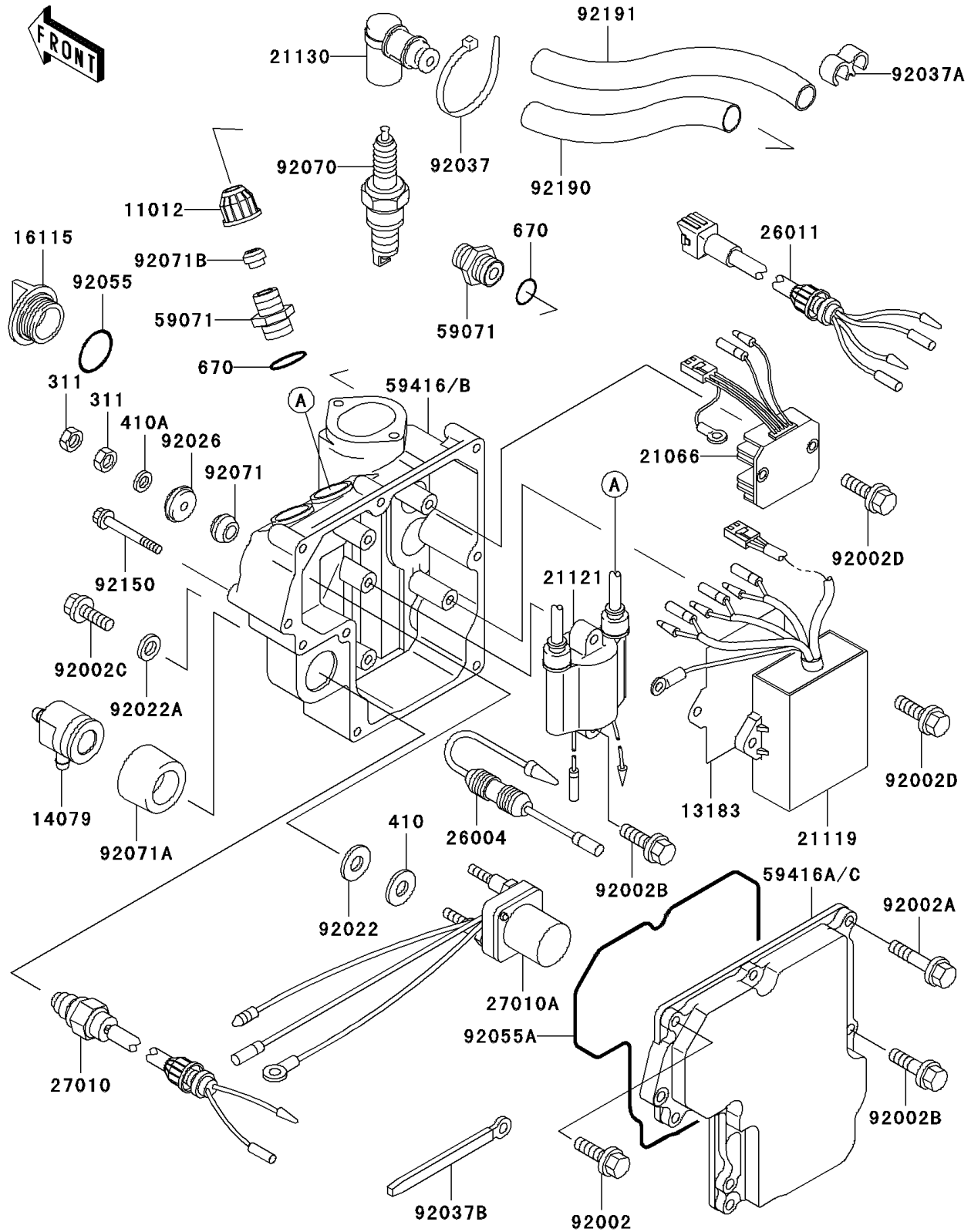


# 1998 SXI PRO PARTS DIAGRAM

Ignition System

E1830



# 1998 SXI PRO PARTS LIST

## Ignition System

| ITEM NAME                           | PART NUMBER | QUANTITY |
|-------------------------------------|-------------|----------|
| NUT-HEX,6MM (Ref # 311)             | 311R0600    | 4        |
| WASHER-PLAIN-SMALL,10MM (Ref # 410) | 410B1000    | 2        |
| WASHER-PLAIN-SMALL,6MM (Ref # 410A) | 410S0600    | 2        |
| CAP (Ref # 11012)                   | 11012-3005  | 2        |
| PLATE (Ref # 13183)                 | 13183-3811  | 1        |
| HOLDER-ASSY (Ref # 14079)           | 14079-3712  | 1        |
| CAP-OIL FILLER (Ref # 16115)        | 16115-1009  | 1        |
| REGULATOR-VOLTAGE (Ref # 21066)     | 21066-3709  | 1        |
| IGNITER (Ref # 21119)               | 21119-3738  | 1        |
| COIL-IGNITION (Ref # 21121)         | 21121-3712  | 1        |
| CAP-SPARK PLUG (Ref # 21130)        | 21130-3706  | 2        |
| FUSE-ASSY (Ref # 26004)             | 26004-3712  | 1        |
| WIRE-LEAD (Ref # 26011)             | 26011-3792  | 1        |
| SWITCH,WATER SENSOR (Ref # 27010)   | 27010-3725  | 1        |
| SWITCH,STARTER RELAY (Ref # 27010A) | 27010-3760  | 1        |
| JOINT (Ref # 59071)                 | 59071-3001  | 4        |
| CASE-ELECTRIC (Ref # 59416)         | 59416-3725  | 1        |
| CASE-ELECTRIC (Ref # 59416A)        | 59416-3726  | 1        |
| BOLT,6X25 (Ref # 92002)             | 92002-3714  | 6        |
| BOLT,6X40 (Ref # 92002A)            | 92002-3716  | 1        |
| BOLT,6X30 (Ref # 92002B)            | 92002-3726  | 3        |
| BOLT,6X16 (Ref # 92002C)            | 92002-3728  | 1        |
| BOLT,6X20 (Ref # 92002D)            | 92002-3755  | 4        |
| WASHER (Ref # 92022)                | 92022-3035  | 2        |
| WASHER (Ref # 92022A)               | 92022-567   | 1        |
| SPACER (Ref # 92026)                | 92026-3703  | 2        |
| CLAMP (Ref # 92037)                 | 92037-1173  | 2        |
| CLAMP,HOSE (Ref # 92037A)           | 92037-1603  | 1        |
| CLAMP,L=100 (Ref # 92037B)          | 92037-3736  | 3        |

## 1998 SXI PRO PARTS LIST

### Ignition System

| ITEM NAME                                 | PART NUMBER | QUANTITY |
|---|-------------|----------|
| RING-O,31.7X2.4 (Ref # 92055)             | 92055-049   | 1        |
| RING-O,ELECTRIC CASE (Ref # 92055A)       | 92055-3731  | 1        |
| PLUG-SPARK,BR8ES(NGK),SOLID (Ref # 92070) | 92070-3702  | 2        |
| GROMMET (Ref # 92071)                     | 92071-3004  | 2        |
| GROMMET (Ref # 92071A)                    | 92071-3782  | 1        |
| GROMMET (Ref # 92071B)                    | 92071-527   | 2        |
| BOLT,6X85 (Ref # 92150)                   | 92150-3763  | 3        |
| TUBE,8X10X175 (Ref # 92190)               | 92190-3961  | 1        |
| TUBE,8X10X265 (Ref # 92191)               | 92191-3706  | 1        |
| O RING,16MM (Ref # 670)                   | 670B2016    | 4        |