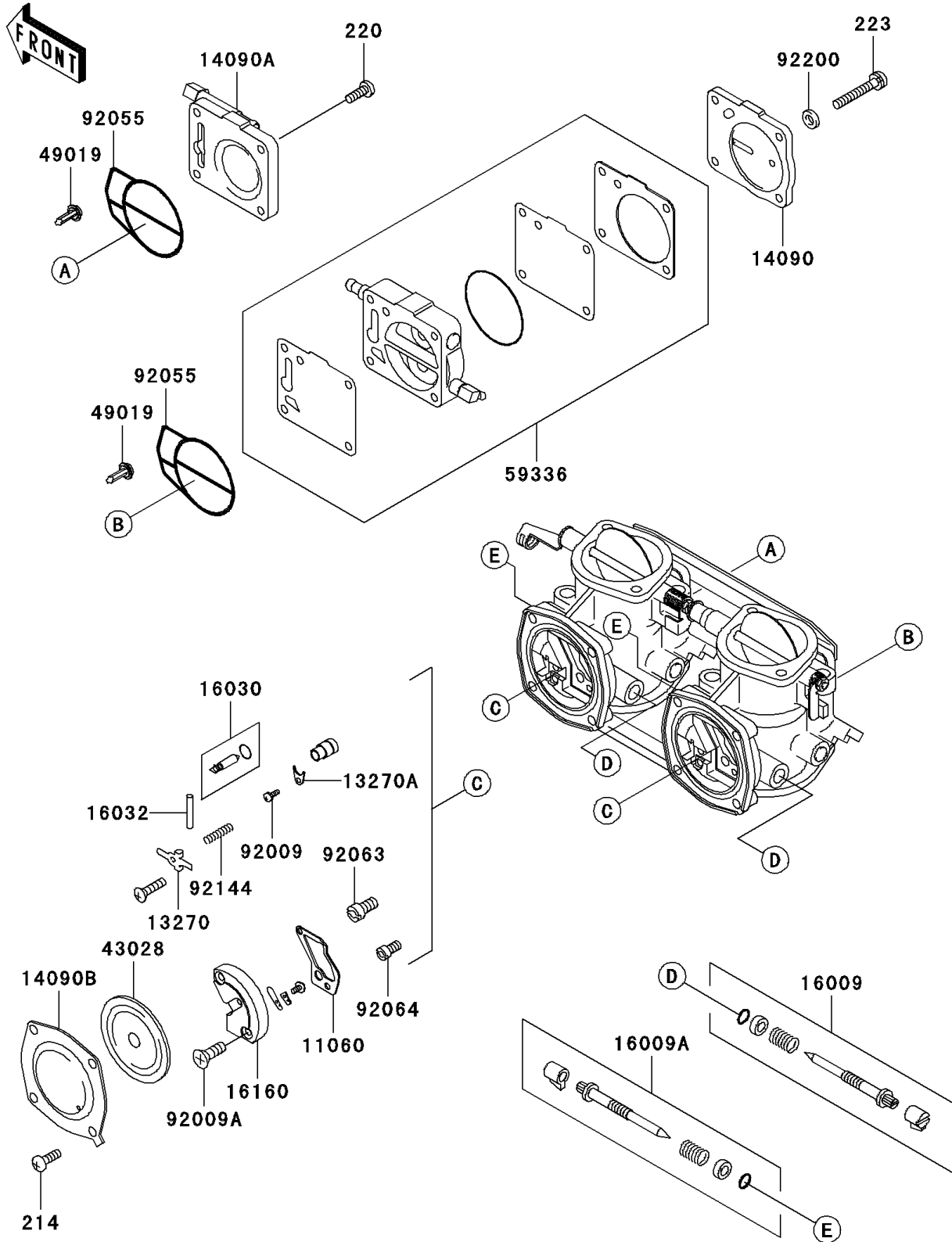


1998 SXI PRO PARTS DIAGRAM

Carburetor Parts

E1612



1998 SXI PRO PARTS LIST

Carburetor Parts

ITEM NAME	PART NUMBER	QUANTITY
SCREW-PAN+- (Ref # 214)	214R0510	1
SCREW-PAN-CROS (Ref # 220)	220R0516	1
SCREW-PAN-WS-CROS (Ref # 223)	223R0535	1
GASKET (Ref # 11060)	11060-3774	1
PLATE (Ref # 13270)	13270-3828	1
PLATE (Ref # 13270A)	13270-3829	1
COVER (Ref # 14090)	14090-3783	1
COVER (Ref # 14090A)	14090-3784	1
COVER (Ref # 14090B)	14090-3785	1
NEEDLE-JET,SLOW (Ref # 16009)	16009-3717	1
NEEDLE-JET,MAIN (Ref # 16009A)	16009-3718	1
VALVE-FLOAT (Ref # 16030)	16030-3703	1
PIN,FLOAT (Ref # 16032)	16032-006	1
BODY (Ref # 16160)	16160-3737	1
DIAPHRAGM (Ref # 43028)	43028-3709	1
FILTER-FUEL (Ref # 49019)	49019-3713	1
CASE-PUMP,DIAPHRAGM (Ref # 59336)	59336-3712	1
SCREW,3X7 (Ref # 92009)	92009-3821	1
SCREW,4X14 (Ref # 92009A)	92009-3822	1
RING-O (Ref # 92055)	92055-3745	1
JET-MAIN,#147.5 (Ref # 92063)	92063-3715	1
JET-PILOT,#67.5 (Ref # 92064)	92064-3701	1
SPRING (Ref # 92144)	92144-3756	1
WASHER,5.3X10X1.0 (Ref # 92200)	92200-3745	1