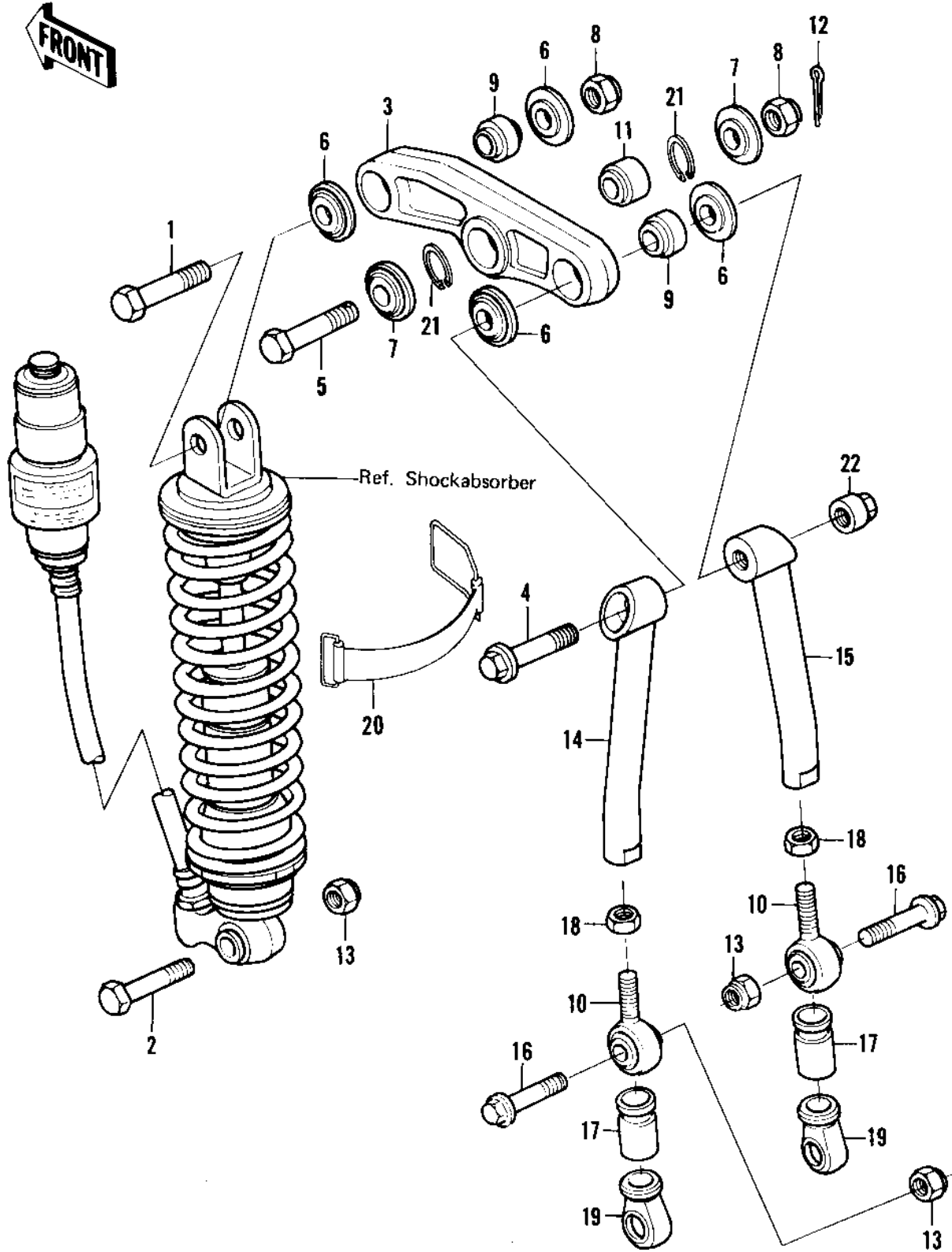


# 1980 KX420 PARTS DIAGRAM

REAR SUSPENSION (KX420-A2)

F2150-0002



# 1980 KX420 PARTS LIST

## REAR SUSPENSION (KX420-A2)

| ITEM NAME                        | PART NUMBER | QUANTITY |
|----------------------------------|-------------|----------|
| BOLT,HEX HEAD,14X50 (Ref # 1)    | 92001-1317  | 1        |
| BOLT,HEX HEAD,12X55 (Ref # 2)    | 113P1255A   | 1        |
| ARM-SUSP (Ref # 3)               | 39007-4002  | 1        |
| BOLT,14X60 (Ref # 4)             | 92001-1344  | 1        |
| BOLT,HEX HEAD,14X60 (Ref # 5)    | 92001-1335  | 1        |
| CAP,SUSPENSION ARM (Ref # 6)     | 11012-1117  | 4        |
| CAP,SUSPENSION ARM (Ref # 7)     | 11012-1168  | 2        |
| NUT-LOCK,14MM (Ref # 8)          | 92019-011   | 2        |
| NUT-LOCK,14MM (Ref # 8)          | 92019-011   | 2        |
| JOINT,BALL,SUSPENSION (Ref # 9)  | 59266-1001  | 2        |
| JOINT,BALL,SUSPENSION (Ref # 10) | 59266-1002  | 2        |
| BUSHING,SUSPENSION AM (Ref # 11) | 92028-1087  | 1        |
| PIN COTTER 2.5X25 (Ref # 12)     | 550D2525    | 1        |
| NUT-LOCK,12MM (Ref # 13)         | 92019-009   | 3        |
| ROD,UNI-TRACK,LH (Ref # 14)      | 46102-1024  | 1        |
| ROD,UNI-TRACK,RH (Ref # 15)      | 46102-1025  | 1        |
| BOLT,HEX HEAD,12X48 (Ref # 16)   | 92001-1297  | 2        |
| BOOT,BALL JOINT (Ref # 17)       | 49006-1045  | 2        |
| NUT-HEX-FINE,12MM (Ref # 18)     | 315B1200    | 2        |
| BOOT,BALL JOINT (Ref # 19)       | 49006-1046  | 2        |
| BAND,FUEL TANK (Ref # 20)        | 92072-076   | 1        |
| RING,SNAP (Ref # 21)             | 92033-1064  | 1        |
| NUT,UNITRAK LINK (Ref # 22)      | 92015-1123  | 1        |