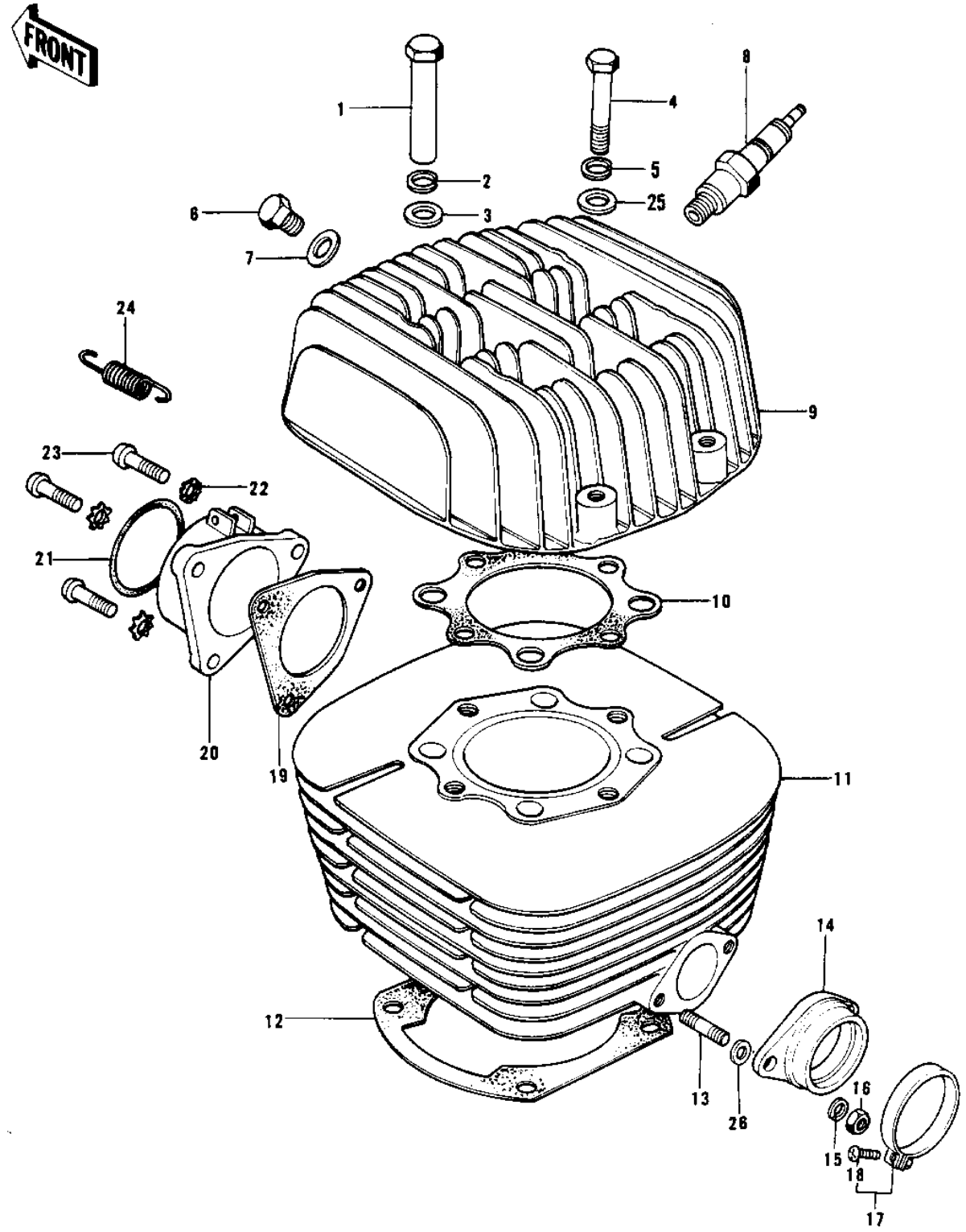


1976 KX400-A2 PARTS DIAGRAM

CYLINDER HEAD/CYLINDER



1976 KX400-A2 PARTS LIST

CYLINDER HEAD/CYLINDER

| ITEM NAME | PART NUMBER | QUANTITY |
|--------------------------------------|--------------|----------|
| NUT,CYLINDER HEAD (Ref # 1) | 92015-065 | |
| WASHER SPRING 14MM (Ref # 2) | 461F1400 | |
| WASHER PLAIN 14MM (Ref # 3) | 411B1400 | |
| BOLT,10X45 (Ref # 4) | 92001-1182 | |
| WASHER SPRING 8MM (Ref # 5) | 461F0800 | |
| PLUG,CYLINDER HEAD (Ref # 6) | 92067-021 | |
| GASKET-CYL HEAD PLUG (Ref # 7) | 92065-068 | |
| SPARK PLUG B9EV (Ref # 8) | B9EV | |
| CYLINDER HEAD,F.BLACK (Ref # 9) | 11001-105-21 | |
| GASKET,CYLINDER HEAD (Ref # 10) | 11004-070 | |
| CYLINDER,FLAT BLACK (Ref # 11) | 11005-148-21 | |
| GASKET,CYLINDER BASE (Ref # 12) | 11009-035 | |
| STUD 8X20 (Ref # 13) | 172G0820 | |
| STUD,8X16 (Ref # 13) | 172G0816 | |
| HOLDER,CARBURETOR (Ref # 14) | 16065-043 | |
| WASHER SPRING 8MM (Ref # 15) | 461F0800 | |
| NUT 8MM (Ref # 16) | 318B0800 | |
| CLAMP,AIR CLEANER (Ref # 17) | 92037-160 | |
| SCREW PAN HEAD 6X30 (Ref # 18) | 220E0630 | |
| GASKET,EXHAUST HOLDER (Ref # 19) | 18050-006 | |
| GASKET,EXHAUST PIPE (Ref # 19) | 18050-010 | |
| HOLDER,EXHAUST PIPE (Ref # 20) | 18062-008 | |
| UNAVAILABLE IN PRICE BOOK (Ref # 21) | 56019-102 | |
| WASHER LOCK 6MM (Ref # 22) | 464H0600 | |
| SCREW PAN HEAD 6X25 (Ref # 23) | 220B0625 | |
| SCREW PAN HEAD 6X22 (Ref # 23) | 220B0622 | |
| SPRING-CONNECTOR (Ref # 24) | 18071-003 | |
| WASHER PLAIN 8MM (Ref # 25) | 410B0800 | |
| GASKET,CARB HOLDER (Ref # 26) | 16062-021 | |