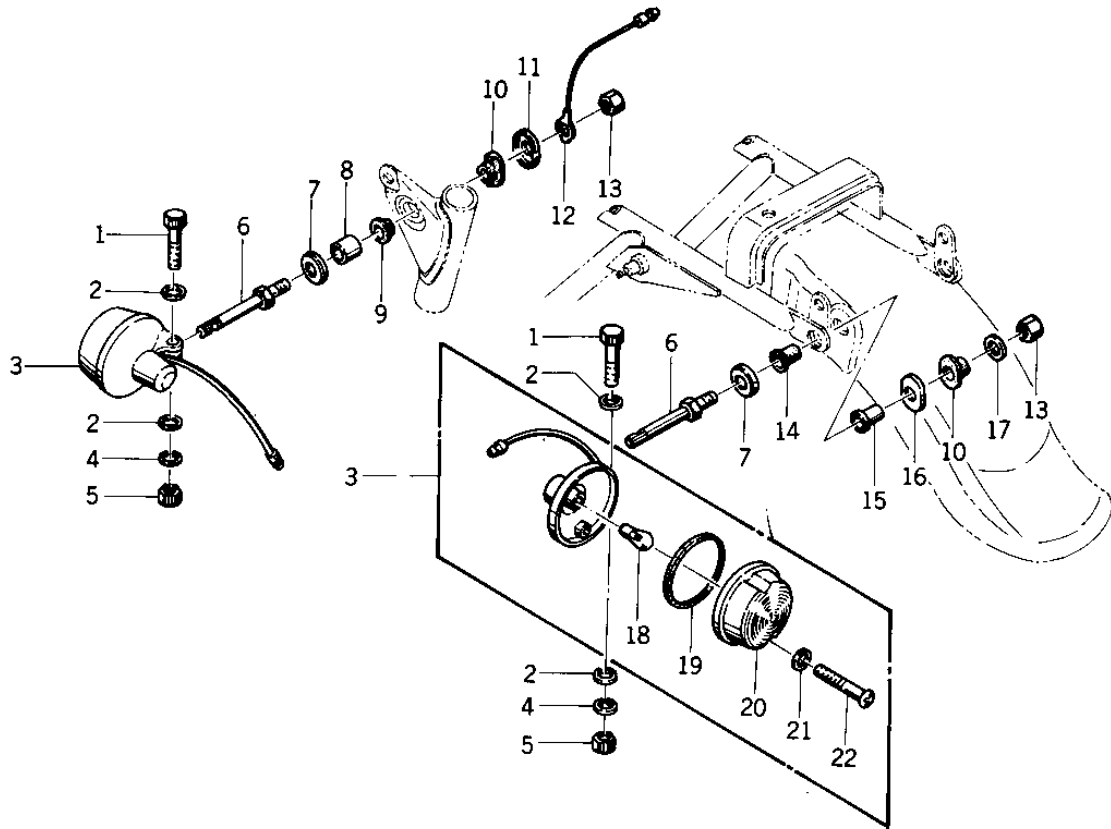


# 1976 KZ400-D3 PARTS DIAGRAM

TURN SIGNALS ('76 -'77 KZ400 - D3/D4)

F  
—



101

## 1976 KZ400-D3 PARTS LIST

TURN SIGNALS ('76 -'77 KZ400 - D3/D4)

ITEM NAME	PART NUMBER	QUANTITY
BOLT HEX HEAD 6X36 (Ref # 1)	110N0636	4
WASHER,PLAIN,6MM (Ref # 2)	410D0600	8
LAMP-TURN SIGNAL (Ref # 3)	23040-029	4
WASHER SPRING 6MM (Ref # 4)	461F0600	4
NUT 6MM (Ref # 5)	312B0600	4
BKT TURN SIGNL LIGHT (Ref # 6)	23051-049	4
CAP,SIGNAL LIGHT STAY (Ref # 7)	92102-015	4
COLLAR,FR SIG LIGHT (Ref # 8)	92027-223	2
DAMPER RUBBER,SIG LM (Ref # 9)	92075-158	2
DAMPER RUBBER,SIG LM (Ref # 9)	92075-158	2
DAMPER RUBBER,SIGNAL (Ref # 10)	92075-238	4
CAP,FR SIG LIGHT STAY (Ref # 11)	92102-014	2
WIRE TURN SIGNAL LEAD (Ref # 12)	26011-081	2
NUT-HEX-FINE,12MM (Ref # 13)	315B1200	4
DAMPER RUBBER,SIGNAL (Ref # 14)	92075-241	2
COLLAR,RR SIG LIGHT (Ref # 15)	92027-225	2
CAP,RR SIG LIGHT STAY (Ref # 16)	92102-013	2
WASHER PLAIN 12MM (Ref # 17)	411B1200	2
BULB 12V 32CP (Ref # 18)	92069-055	4
GASKET,TURN SIG LAMP (Ref # 19)	23050-002	4
LENS-SIGNAL LAMP (Ref # 20)	23048-1024	4
LENS-SIGNAL LAMP (Ref # 20)	23048-1024	AL
WASHER-PLAIN,4MM (Ref # 21)	23058-002	8
SCREW-PAN HEAD,4X35 (Ref # 22)	220E0435A	8