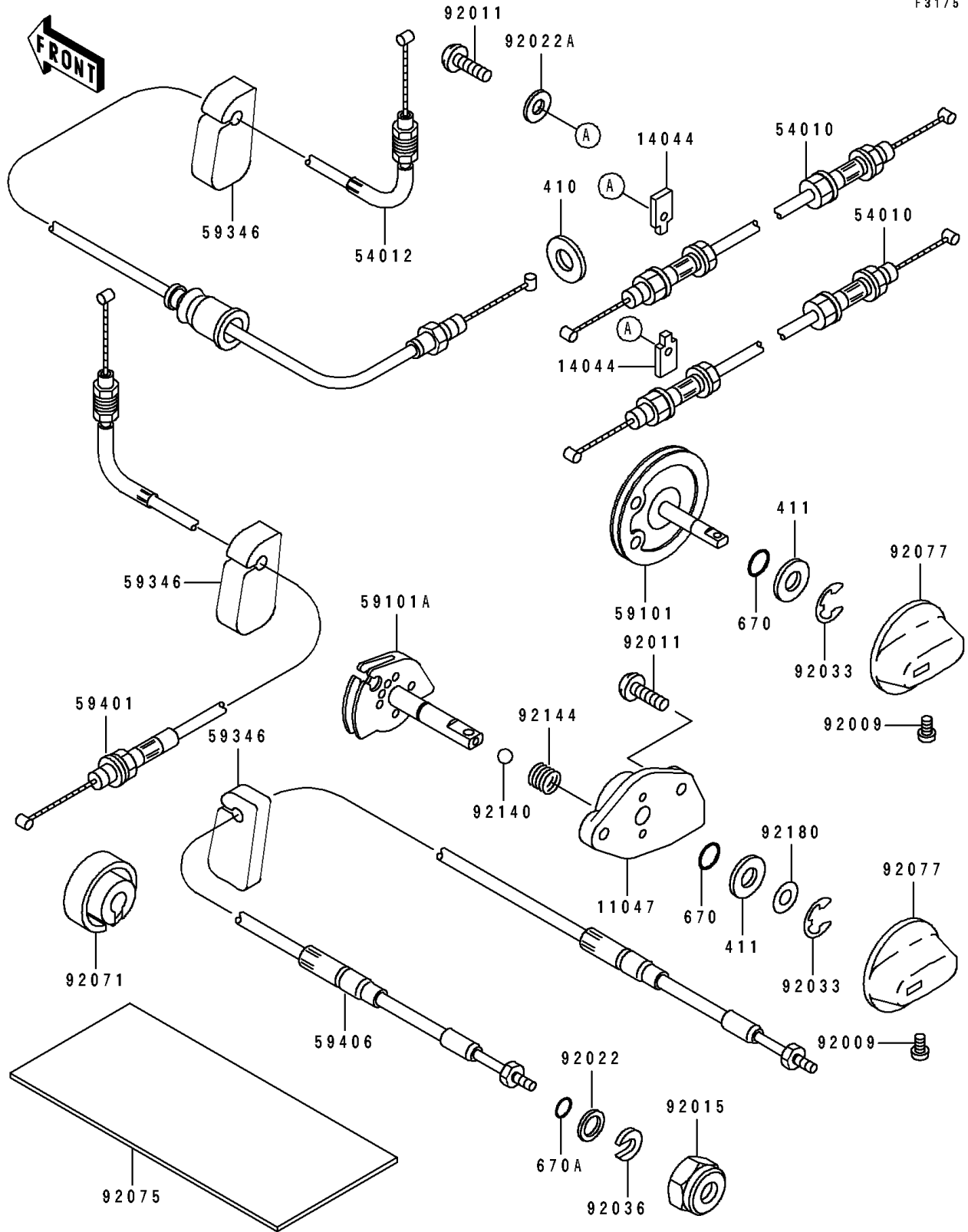


1995 750 SX PARTS DIAGRAM

Cables

F3175



1995 750 SX PARTS LIST

Cables

| ITEM NAME | PART NUMBER | QUANTITY |
|-----------------------------------|-------------|----------|
| BRACKET,CHOKE CABLE (Ref # 11047) | 11047-3746 | 1 |
| HOLDER-CABLE (Ref # 14044) | 14044-3715 | 2 |
| CABLE,SHIFT (Ref # 54010) | 54010-3706 | 2 |
| CABLE-THROTTLE (Ref # 54012) | 54012-3732 | 1 |
| REEL,SHIFT CABLE (Ref # 59101) | 59101-3709 | 1 |
| REEL,CHOKE CABLE (Ref # 59101A) | 59101-3711 | 1 |
| DETENT (Ref # 59346) | 59346-504 | 3 |
| CABLE-CHOKE (Ref # 59401) | 59401-3710 | 1 |
| CABLE-STRG (Ref # 59406) | 59406-3726 | 1 |
| SCREW,4X8 (Ref # 92009) | 92009-3729 | 2 |
| SCREW (Ref # 92011) | 92011-562 | 4 |
| NUT,20MM (Ref # 92015) | 92015-526 | 1 |
| WASHER (Ref # 92022) | 92022-535 | 1 |
| WASHER (Ref # 92022A) | 92022-563 | 2 |
| RING-SNAP,7MM (Ref # 92033) | 92033-3704 | 2 |
| RING-SNAP (Ref # 92036) | 92036-501 | 1 |
| GROMMET (Ref # 92071) | 92071-3774 | 1 |
| DAMPER,MUFFLER (Ref # 92075) | 92075-522 | 1 |
| KNOB,CABLE (Ref # 92077) | 92077-3716 | 2 |
| BALL,3MM (Ref # 92140) | 92140-3702 | 2 |
| SPRING (Ref # 92144) | 92144-3712 | 2 |
| SHIM,8.5X18X0.15 (Ref # 92180) | 92180-3702 | 1 |
| W-PLAIN-S,10MM (Ref # 410) | 410S1000 | 1 |
| WASHER-PLAIN,8MM (Ref # 411) | 411S0800 | 2 |
| O RING,8MM (Ref # 670) | 670B1508 | 2 |
| O RING,11MM (Ref # 670A) | 670B2011 | 1 |