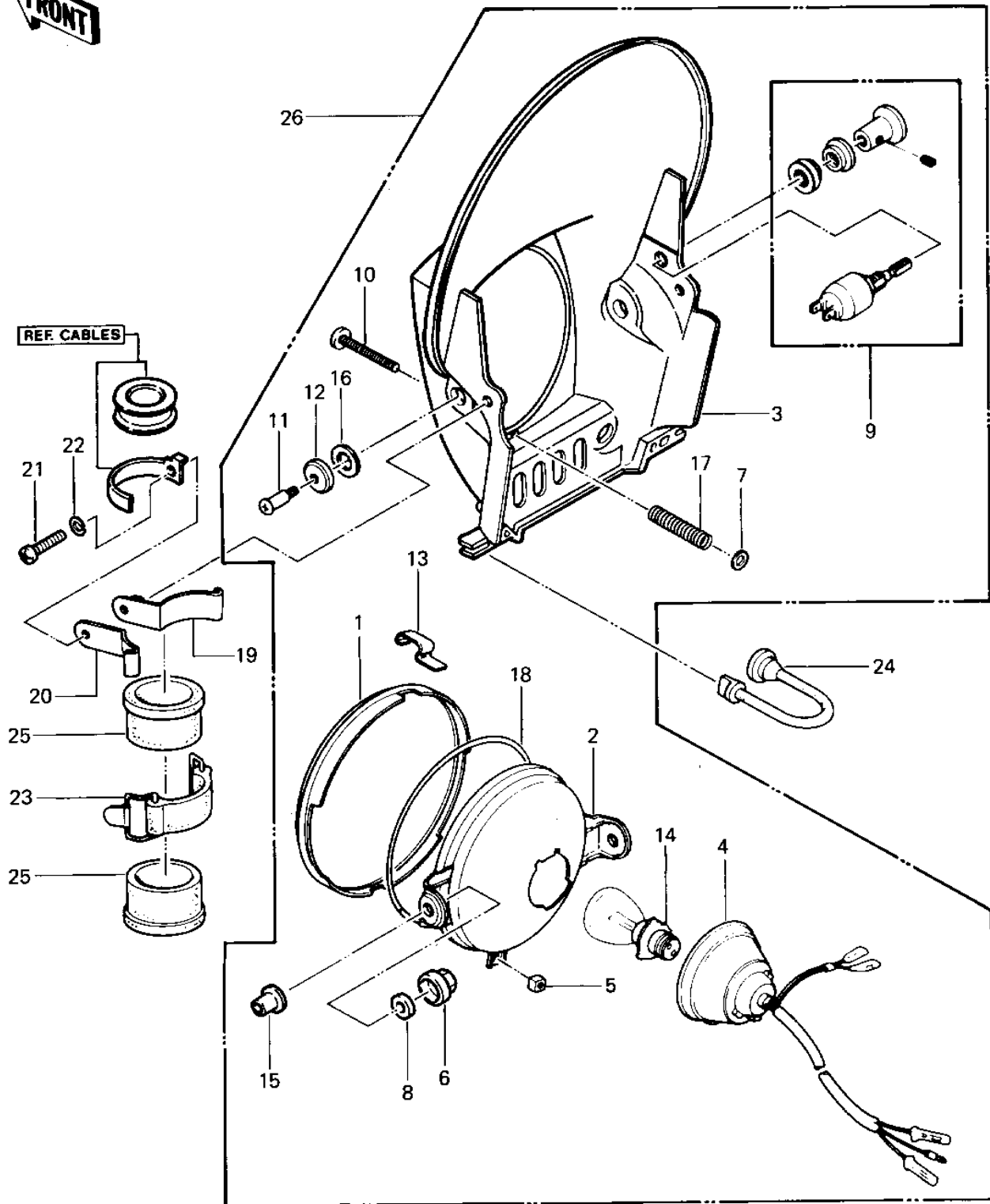


1979 KDX400 PARTS DIAGRAM

HEADLIGHT



1979 KDX400 PARTS LIST

HEADLIGHT

| ITEM NAME | PART NUMBER | QUANTITY |
|----------------------------------|---------------|----------|
| COVER,HEAD LAMP (Ref # 1) | 14025-4002 | 1 |
| LAMP,HEAD (Ref # 2) | 23004-4001 | 1 |
| BODY-COMP-HEAD LAMP,L (Ref # 3) | 23005-5002-7F | 1 |
| SOCKET,HEAD LAMP (Ref # 4) | 23008-4001 | 1 |
| NUT,4MM (Ref # 5) | 23020-018 | 1 |
| NUT,HEAD LAMP RIM FIT (Ref # 6) | 23020-023 | 1 |
| WASHER (Ref # 7) | 23021-004 | 1 |
| WASHER-PLAIN,5MM (Ref # 8) | 23021-012 | 1 |
| SWITCH,HEAD LAMP (Ref # 9) | 27004-4001 | 1 |
| SCREW,ADJUSTING,4X43 (Ref # 10) | 92009-4002 | 1 |
| SCREW,HEAD LAMP (Ref # 11) | 92009-4003 | 1 |
| WASHER,HEAD LAMP (Ref # 12) | 92022-4005 | 1 |
| CLAMP,HEAD LAMP (Ref # 13) | 92037-4001 | 1 |
| BULB,6V 35/25W (Ref # 14) | 92069-4001 | 1 |
| DAMPER,HEAD LAMP (Ref # 15) | 92075-4009 | 1 |
| DAMPER,HEAD LAMP (Ref # 16) | 92075-4010 | 1 |
| SPRING,FOCUS ADJUSTNG (Ref # 17) | 92081-4003 | 1 |
| SEAL,HEAD LAMP (Ref # 18) | 92093-4001 | 1 |
| BRACKET (Ref # 19) | 11034-4007 | 1 |
| BRACKET (Ref # 20) | 11034-4008 | 1 |
| SCREW PAN HEAD 6X16 (Ref # 21) | 220B0616 | 1 |
| WASHER SPRING 6MM (Ref # 22) | 461F0600 | 1 |
| BAND,FUEL TANK (Ref # 23) | 92072-076 | 1 |
| BAND,HEAD LAMP (Ref # 24) | 92072-077 | 1 |
| DAMPER (Ref # 25) | 92075-4005 | 1 |
| HEAD LAMP ASSY (Ref # 26) | 23001-4001 | 1 |