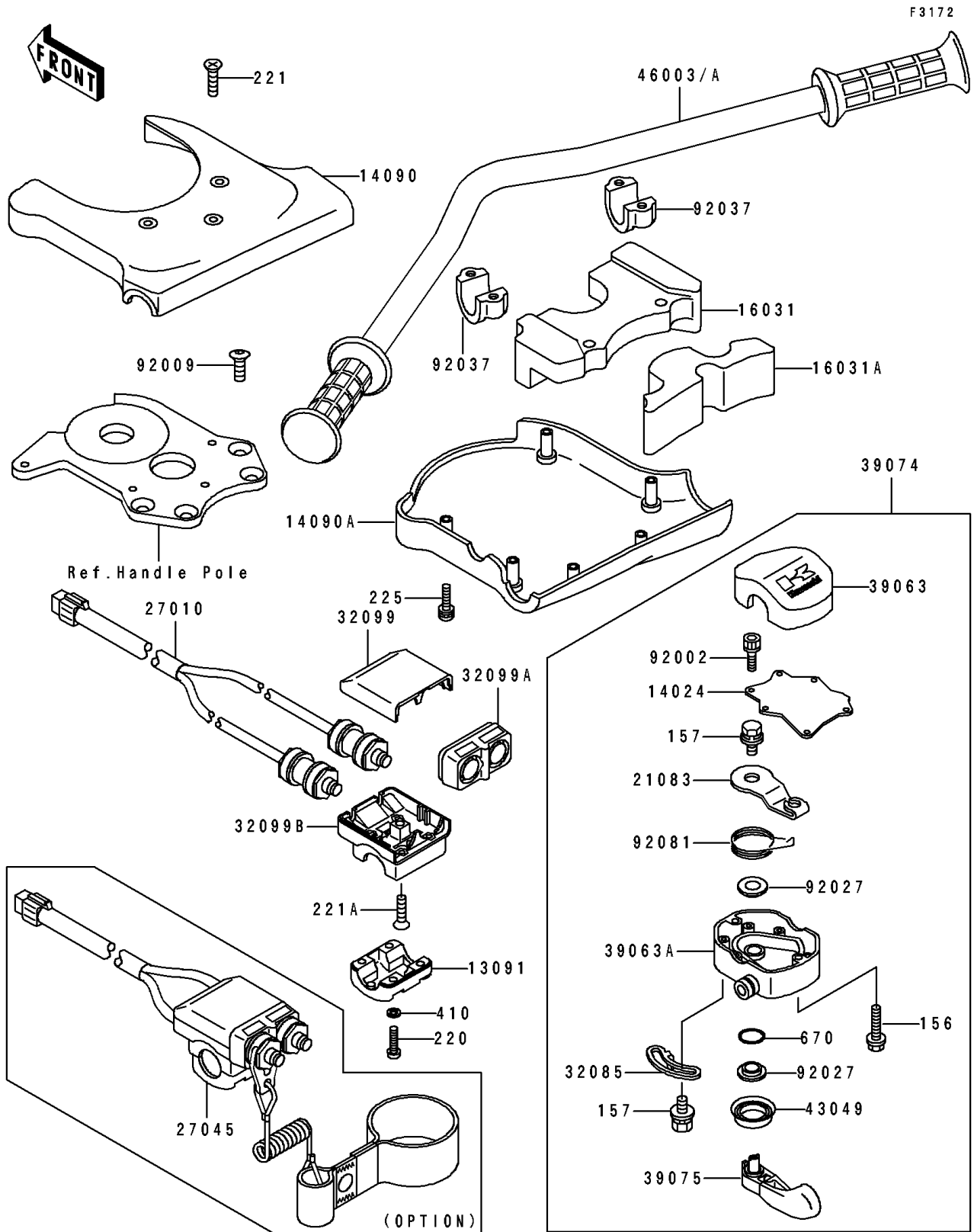


1995 750 SX PARTS DIAGRAM

Handlebar



1995 750 SX PARTS LIST

Handlebar

ITEM NAME	PART NUMBER	QUANTITY
HOLDER,SWITCH (Ref # 13091)	13091-3767	1
COVER,THROTTLE LEVER (Ref # 14024)	14024-3701	1
COVER,HANDLE,UPP,VIOLET (Ref # 14090)	14090-3705-PJ	1
COVER,HANDLE,LWR,VIOLET (Ref # 14090A)	14090-3706-PJ	1
FLOAT,HANDLE COVER (Ref # 16031)	16031-3800	1
FLOAT,HANDLE COVER (Ref # 16031A)	16031-3812	1
ARM,THROTTLE LEVER (Ref # 21083)	21083-3701	1
SWITCH,STOP&START (Ref # 27010)	27010-3732	1
SWITCH-ASSY,STOP&START (Ref # 27045)	27045-3706	1
STOPPER (Ref # 32085)	32085-3709	1
CASE,UPP,SWITCH (Ref # 32099)	32099-3764	1
CASE,FR,SWITCH (Ref # 32099A)	32099-3765	1
CASE,LWR,SWITCH (Ref # 32099B)	32099-3766	1
HOUSING-CONTROL,UPP (Ref # 39063)	39063-3713	1
HOUSING-CONTROL,LWR (Ref # 39063A)	39063-3714	1
LEVER-ASSY-THROTTLE (Ref # 39074)	39074-3714	1
LEVER-THROTTLE (Ref # 39075)	39075-3708	1
PACKING,THROTTLE LEVER (Ref # 43049)	43049-3701	1
HANDLE (Ref # 46003A)	46003-3728	1
BOLT,SOCKET,3X10 (Ref # 92002)	92002-3751	6
SCREW,8X22 (Ref # 92009)	92009-3701	4
COLLAR,THROTTLE LEVER (Ref # 92027)	92027-3704	2
CLAMP,HANDLEBAR (Ref # 92037)	92037-503	2
SPRING,THROTTLE LEVER RETURN (Ref # 92081)	92081-3702	1
BOLT-WP,5X25 (Ref # 156)	156R0525	2
BOLT-WSP,5X12 (Ref # 157)	157R0512	2
SCREW-PAN-CROS,5X20 (Ref # 220)	220R0520	4
SCREW-CSK-CROS,6X16 (Ref # 221)	221R0616	3
SCREW-CSK-CROS,6X25 (Ref # 221A)	221R0625	1

1995 750 SX PARTS LIST

Handlebar

ITEM NAME	PART NUMBER	QUANTITY
SCREW-PAN-WSP-CROS,5X20 (Ref # 225)	225R0520	6
W-PLAIN-S,5MM (Ref # 410)	410S0500	4
O RING,8MM (Ref # 670)	670B1508	1