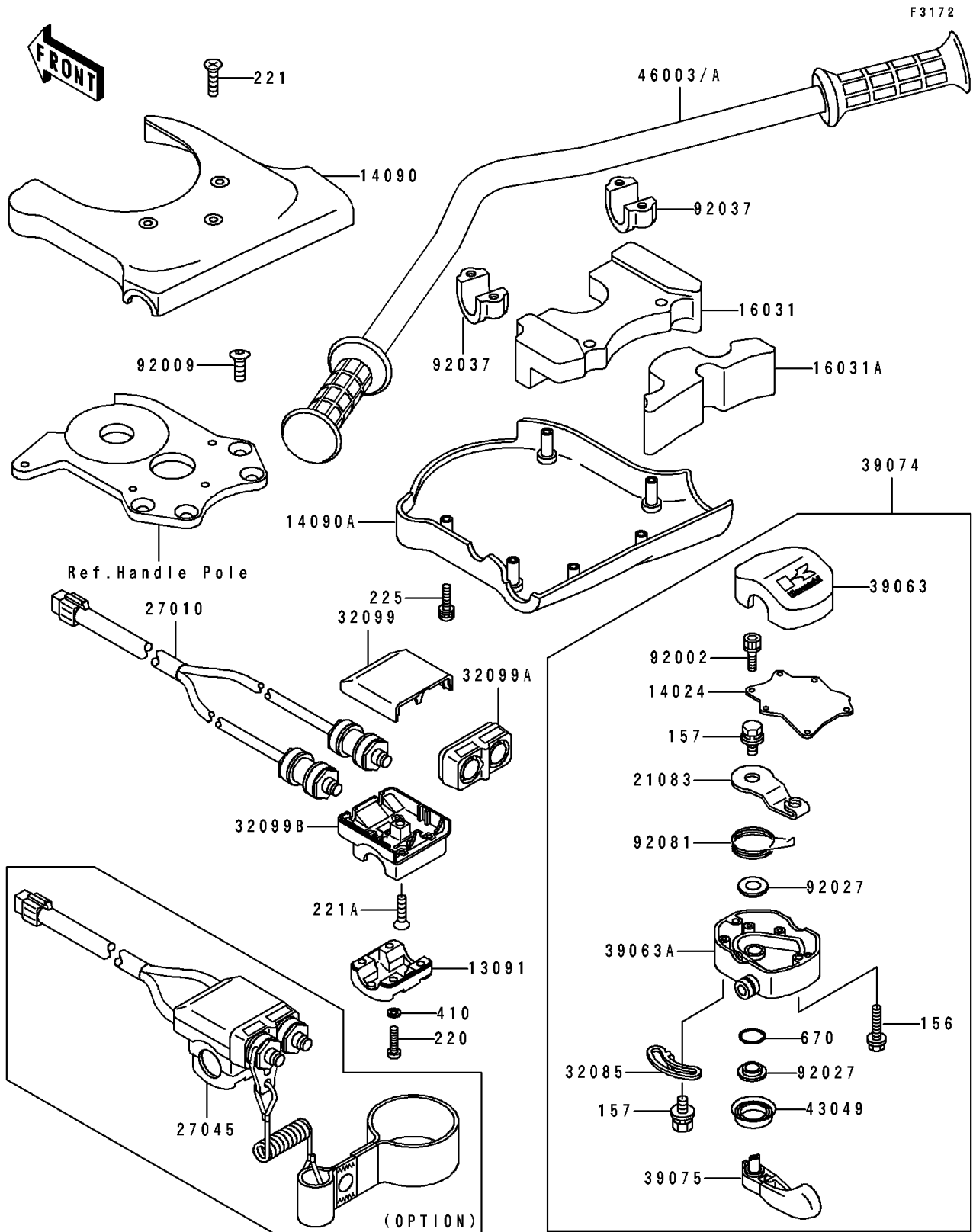


1993 750 SX PARTS DIAGRAM

Handlebar



1993 750 SX PARTS LIST

Handlebar

| ITEM NAME | PART NUMBER | QUANTITY |
|--|---------------|----------|
| HOLDER,SWITCH (Ref # 13091) | 13091-3767 | 1 |
| COVER,THROTTLE LEVER (Ref # 14024) | 14024-3701 | 1 |
| COVER,HANDLE,UPP,VIOLET (Ref # 14090) | 14090-3705-PJ | 1 |
| COVER,HANDLE,LWR,VIOLET (Ref # 14090A) | 14090-3706-PJ | 1 |
| FLOAT,HANDLE COVER (Ref # 16031) | 16031-3800 | 1 |
| FLOAT,HANDLE COVER (Ref # 16031A) | 16031-3812 | 1 |
| ARM,THROTTLE LEVER (Ref # 21083) | 21083-3701 | 1 |
| SWITCH,STOP&START (Ref # 27010) | 27010-3732 | 1 |
| SWITCH-ASSY,STOP&START (Ref # 27045) | 27045-3706 | 1 |
| STOPPER (Ref # 32085) | 32085-3709 | 1 |
| CASE,UPP,SWITCH (Ref # 32099) | 32099-3764 | 1 |
| CASE,FR,SWITCH (Ref # 32099A) | 32099-3765 | 1 |
| CASE,LWR,SWITCH (Ref # 32099B) | 32099-3766 | 1 |
| HOUSING-CONTROL,UPP (Ref # 39063) | 39063-3713 | 1 |
| HOUSING-CONTROL,LWR (Ref # 39063A) | 39063-3714 | 1 |
| LEVER-ASSY-THROTTLE (Ref # 39074) | 39074-3714 | 1 |
| LEVER-THROTTLE (Ref # 39075) | 39075-3708 | 1 |
| PACKING,THROTTLE LEVER (Ref # 43049) | 43049-3701 | 1 |
| HANDLE (Ref # 46003) | 46003-3718 | 1 |
| BOLT,SOCKET,3X10 (Ref # 92002) | 92002-3751 | 6 |
| SCREW,8X22 (Ref # 92009) | 92009-3701 | 4 |
| COLLAR,THROTTLE LEVER (Ref # 92027) | 92027-3704 | 2 |
| CLAMP,HANDLEBAR (Ref # 92037) | 92037-503 | 2 |
| SPRING,THROTTLE LEVER RETURN (Ref # 92081) | 92081-3702 | 1 |
| BOLT-WP,5X25 (Ref # 156) | 156R0525 | 2 |
| BOLT-WSP,5X12 (Ref # 157) | 157R0512 | 2 |
| SCREW-PAN-CROS,5X20 (Ref # 220) | 220R0520 | 4 |
| SCREW-CSK-CROS,6X16 (Ref # 221) | 221R0616 | 3 |
| SCREW-CSK-CROS,6X25 (Ref # 221A) | 221R0625 | 1 |

1993 750 SX PARTS LIST

Handlebar

| ITEM NAME | PART NUMBER | QUANTITY |
|-------------------------------------|-------------|----------|
| SCREW-PAN-WSP-CROS,5X20 (Ref # 225) | 225R0520 | 6 |
| W-PLAIN-S,5MM (Ref # 410) | 410S0500 | 4 |
| O RING,8MM (Ref # 670) | 670B1508 | 1 |