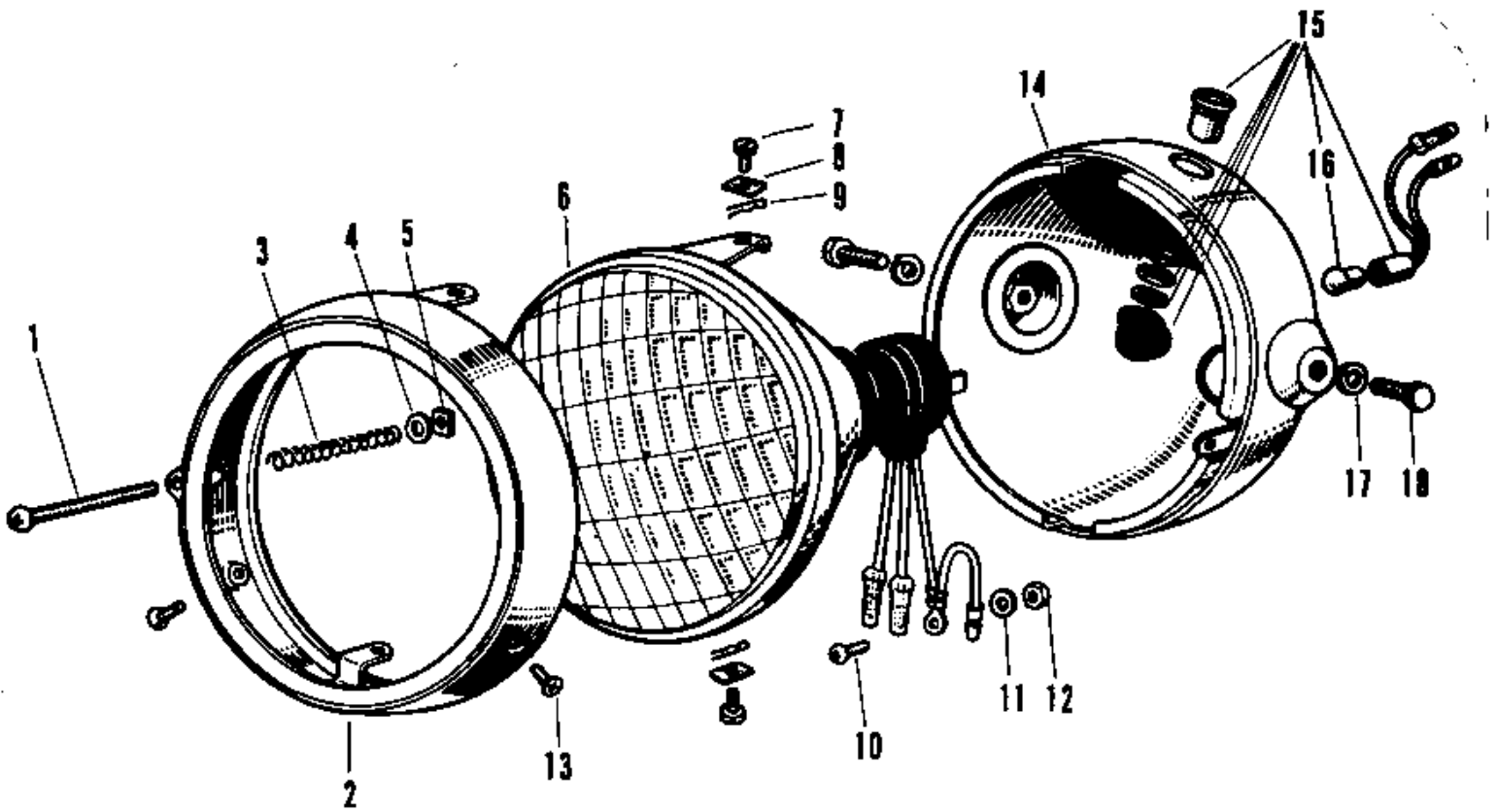


1966 Samurai PARTS DIAGRAM

HEADLIGHT A1A-A7SSA



1966 Samurai PARTS LIST

HEADLIGHT A1A-A7SSA

ITEM NAME	PART NUMBER	QUANTITY
LAMP UNIT HEAD (Ref # 1~13)	23003-011	1
SCREW FORCUS ADJUST (Ref # 1)	23019-021	1
RIM HEAD LAMP (Ref # 2)	23006-017	1
SPRING FOCUS ADJUST (Ref # 3)	23014-005	1
WASHER (Ref # 4)	23021-004	1
NUT (Ref # 5)	23020-016	1
SEALED BEAM UNIT (Ref # 6)	23007-025	1
SCREW LENS UNIT FITT (Ref # 7)	23019-018	2
NUT LENS UNIT FITTING (Ref # 8)	23020-009	2
PIN LENS UNIT FITTING (Ref # 9)	23022-001	2
SCREW-PAN-HEAD 3X6 (Ref # 10)	220B0306	1
WASHER SPRING 3MM (Ref # 11)	461F0300	1
NUT-HEX (Ref # 12)	311B0300	1
SCREW OVL CNTSNK 5X10 (Ref # 13)	222E0510	2
BODY-HEAD LAMP,F BLK (Ref # 14)	23005-018-21	1
LAMP ASSY HIGH BEAM (Ref # 15)	23016-002	1
BULB 12V 1.5W (Ref # 16)	92069-017	1
WASHER SPRING 10MM (Ref # 17)	461F1000	2
BOLT,HEX HEAD,10X25 (Ref # 18)	92007-045	2