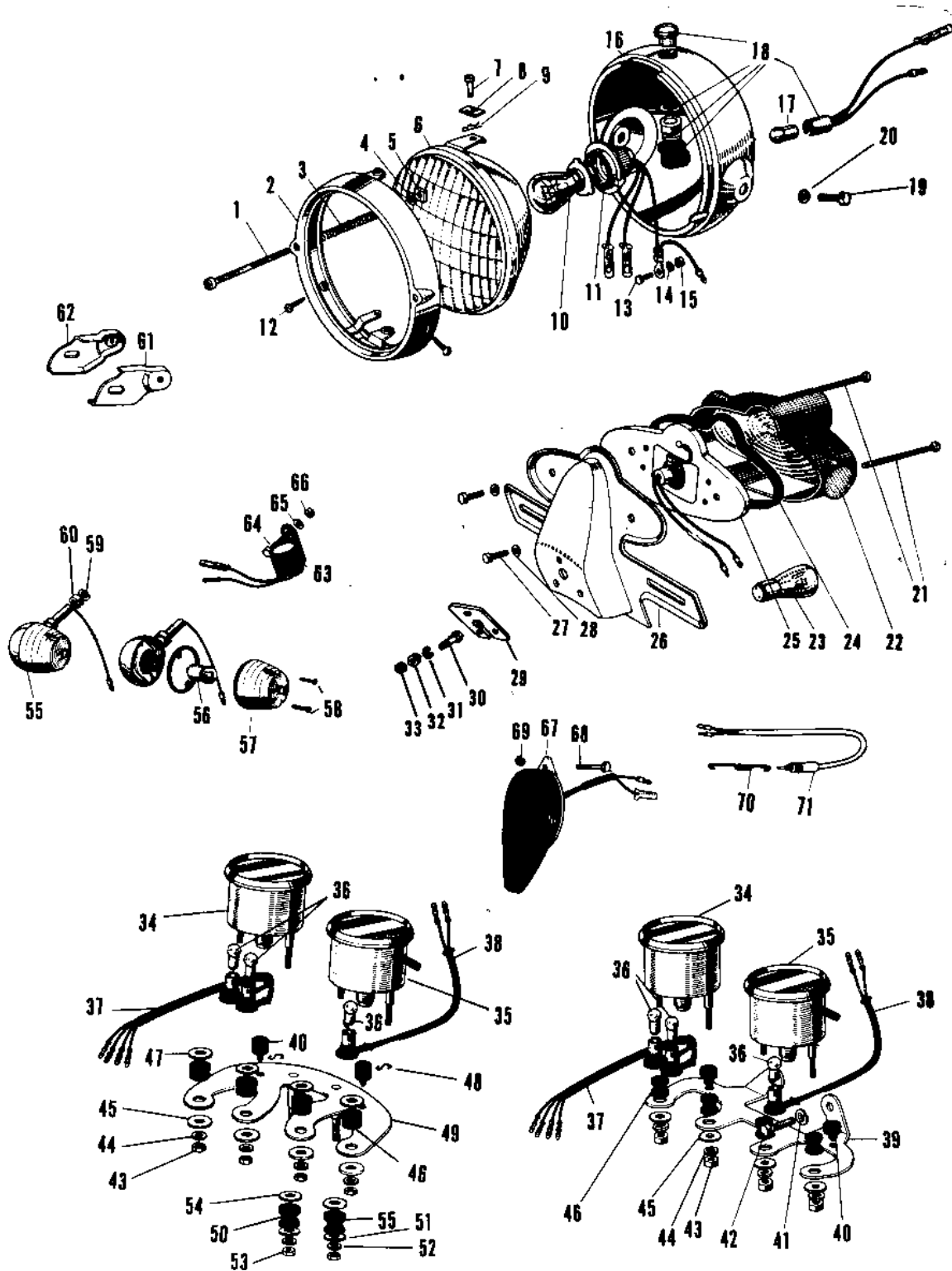


1969 A1SS PARTS DIAGRAM

HEADLIGHT/TAILLIGHT/METERS 2



1969 A1SS PARTS LIST

HEADLIGHT/TAILLIGHT/METERS 2

| ITEM NAME | PART NUMBER | QUANTITY |
|------------------------------------|--------------|----------|
| LAMP UNIT HEAD (Ref # 1~15) | 23004-020 | 1 |
| SCREW FOCUS ADJUST (Ref # 1) | 23019-017 | 1 |
| SCREW FORCUS ADJUST (Ref # 1) | 23019-021 | 1 |
| RIM HEAD LAMP (Ref # 2) | 23006-017 | 1 |
| SPRING FOCUS ADJUST (Ref # 3) | 23014-005 | 1 |
| WASHER (Ref # 4) | 23021-004 | 1 |
| NUT (Ref # 5) | 23020-010 | 1 |
| NUT (Ref # 5) | 23020-016 | 1 |
| LENS UNIT HEAD LAMP (Ref # 6) | 23007-013 | 1 |
| SCREW LENS UNIT FITT (Ref # 7) | 23019-018 | 1 |
| NUT LENS UNIT FITTING (Ref # 8) | 23020-009 | 1 |
| PIN LENS UNIT FITTING (Ref # 9) | 23022-001 | 1 |
| BULB 12V 35/25W (Ref # 10) | 92069-037 | 1 |
| SOCKET HEAD LAMP (Ref # 11) | 23008-011 | 1 |
| SCREW OVL CNTSNK 5X10 (Ref # 12) | 222E0510 | 2 |
| SCREW PAN HEAD 3X6 (Ref # 13) | 211B0306 | 1 |
| SCREW-PAN-HEAD 3X6 (Ref # 13) | 220B0306 | 1 |
| WASHER SPRING 3MM (Ref # 14) | 461F0300 | 1 |
| NUT-HEX (Ref # 15) | 311B0300 | 2 |
| BODY-HEAD LAMP,F BLK (Ref # 16) | 23005-018-21 | 1 |
| BODY HEAD LAMP (Ref # 16) | 23005-023 | 1 |
| BULB 12V 1.5W (Ref # 17) | 92069-017 | 1 |
| LAMP ASSY HIGH BEAM (Ref # 18) | 23016-002 | 1 |
| BOLT,HEX HEAD,10X25 (Ref # 19) | 92007-045 | 1 |
| WASHER SPRING 10MM (Ref # 20) | 461F1000 | 2 |
| LAMP ASSY TAIL (Ref # 21~28) | 23025-027 | 1 |
| LAMP ASSY TAIL BLACK (Ref # 21~28) | 23025-029-10 | 1 |
| SCREW PAN HEAD 4X50 (Ref # 21) | 220E0450 | 2 |
| LENS TAIL LAMP (Ref # 22) | 23026-010 | 1 |

1969 A1SS PARTS LIST

HEADLIGHT/TAILLIGHT/METERS 2

| ITEM NAME | PART NUMBER | QUANTITY |
|-------------------------------------|--------------|----------|
| BULB,12V 32/3CP (Ref # 23) | 92069-059 | 1 |
| GASKET TAIL LAMP (Ref # 24) | 23028-008 | 1 |
| SOCKET TAIL LAMP (Ref # 25) | 23027-009 | 1 |
| BKT LICENSE PLT (Ref # 26) | 23036-002 | 1 |
| BKT LICENSE PLT BLACK (Ref # 26) | 23036-007-10 | 1 |
| BOLT HEX HEAD 5X10 (Ref # 27) | 110N0510 | 1 |
| BOLT HEX HEAD 5X10 (Ref # 27) | 110N0510A | 1 |
| WASHER SPRING 5MM (Ref # 28) | 461F0500 | 2 |
| DAMPER-TAIL LAMP SHCK (Ref # 29) | 35039-005 | 1 |
| BOLT-UPSET (Ref # 30) | 112G0630 | 1 |
| WASHER SPRING 6MM (Ref # 31) | 461F0600 | 2 |
| NUT 6MM (Ref # 32) | 311B0600 | 3 |
| NUT 6MM (Ref # 33) | 312B0600 | 1 |
| TACHOMETER ASSY (Ref # 34, 36) | 25015-002 | 1 |
| SPEEDOMETER ASSY MPH (Ref # 35,36,) | 25005-027 | 1 |
| BULB 12V 3W (Ref # 36) | 92069-018 | 1 |
| SOCKET TACHOMETER (Ref # 37) | 25011-002 | 1 |
| SOCKET SPEEDOMETER (Ref # 38) | 25011-003 | 1 |
| BRACKET SPEEDOMETER (Ref # 39) | 25008-006 | 1 |
| DAMPER RUBB SPEEDMETR (Ref # 40) | 92075-035 | 1 |
| WASHER SPRING 8MM (Ref # 41) | 461F0800 | 2 |
| BOLT HEX HEAD 8X16 (Ref # 42) | 116B0816 | 1 |
| NUT,5MM (Ref # 43) | 311B0500 | 2 |
| WASHER PL 5.5X20X1.2 (Ref # 45) | 92022-104 | 1 |
| DAMPER RUBB SPEEDMETR (Ref # 46) | 92075-034 | 1 |
| WASHER PLAIN 8MM (Ref # 47) | 411B0800 | 2 |
| CLAMP CABLE (Ref # 48) | 25022-002 | 1 |
| BRACKET SPEEDOMETER (Ref # 49) | 25008-009 | 1 |
| DAMPER RUBB SPEEDMETR (Ref # 50) | 92075-024 | 1 |

1969 A1SS PARTS LIST

HEADLIGHT/TAILLIGHT/METERS 2

| ITEM NAME | PART NUMBER | QUANTITY |
|----------------------------------|-------------|----------|
| WASHER 6.5X20X1.6T (Ref # 51) | 92022-125 | 1 |
| LAMP FRNT TURN SIGNAL (Ref # 55) | 23040-020 | 1 |
| BULB 12V 8W (Ref # 56) | 92069-043 | 1 |
| LENS TURN SIGNAL LAMP (Ref # 57) | 23048-011 | 1 |
| SCREW OVL CNTSNK 3X15 (Ref # 58) | 222B0315A | 1 |
| NUT 10MM (Ref # 60) | 315B1000 | 1 |
| BRACKET RR TRN SIG L (Ref # 61) | 23051-010 | 1 |
| BRACKET RR TRN SIG R (Ref # 62) | 23051-009 | 1 |
| RELAY TURN SIGNAL (Ref # 63) | 27002-008 | 1 |
| BOLT-UPSET,6X16 (Ref # 64) | 112G0616 | 1 |
| WASHER PLAIN 6MM (Ref # 65) | 411B0600 | 1 |
| HORN (Ref # 67) | 27003-012 | 1 |
| BOLT-SMALL-UPSET,8X18 (Ref # 68) | 115G0818 | 1 |
| SPRING BRAKE LAMP SW (Ref # 70) | 27011-009 | 1 |
| SWITCH BRAKE LAMP (Ref # 71) | 27010-006 | 1 |