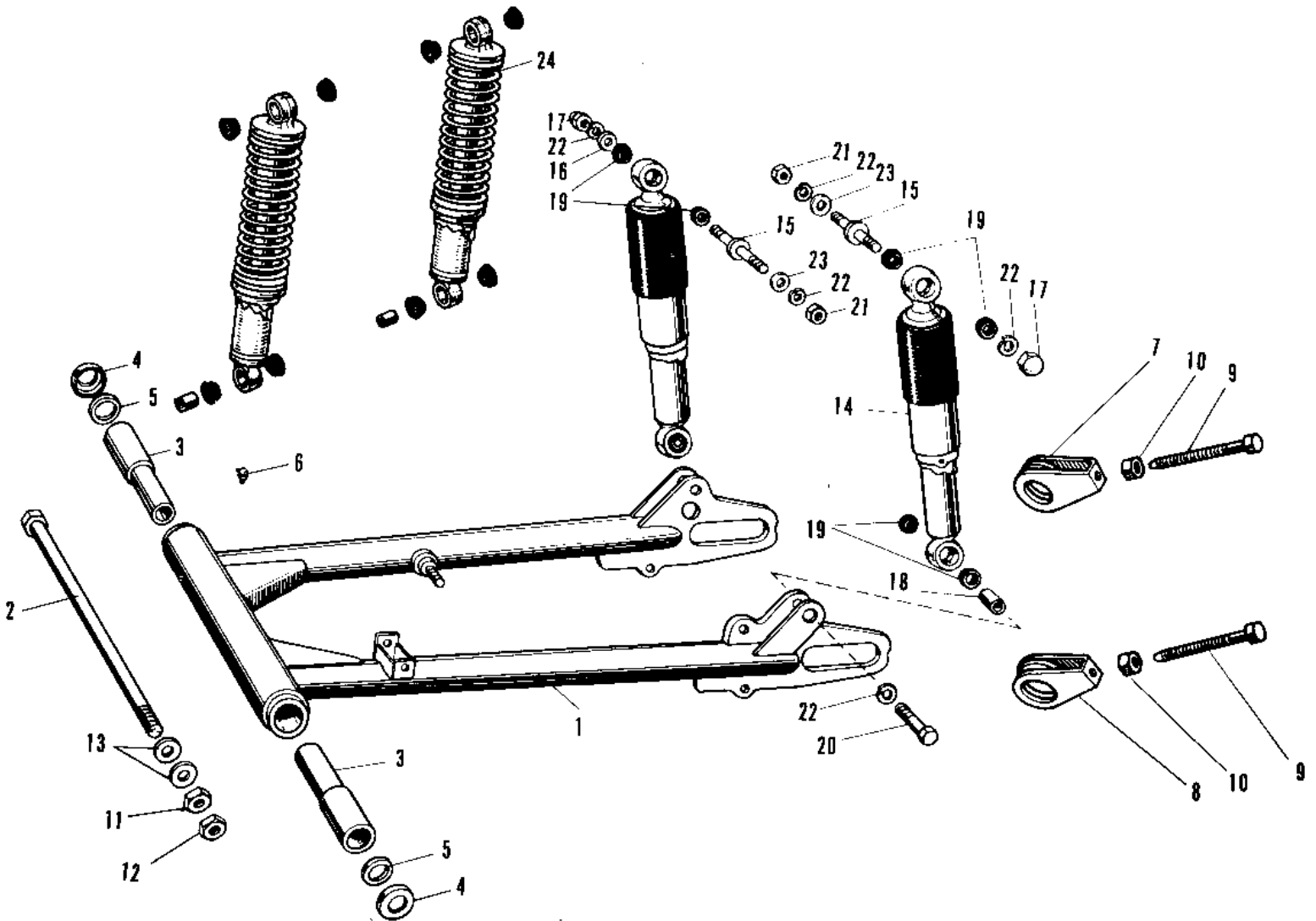


1967 Avenger PARTS DIAGRAM

SWING ARM/SHOCK ABSORBERS A1-A7SS



1967 Avenger PARTS LIST

SWING ARM/SHOCK ABSORBERS A1-A7SS

| ITEM NAME | PART NUMBER | QUANTITY |
|--------------------------------------|--------------|----------|
| ARM NET-NWING (Ref # 1) | 33002-015 | 1 |
| SHAFT SWING ARM PIVOT (Ref # 2) | 33032-012 | 1 |
| SLEEVE SWING ARM SHT (Ref # 3) | 33034-002 | 1 |
| SLEEVE SWING ARM SHT (Ref # 3) | 33034-003 | 1 |
| DUST SHIELD PIVOT SFT (Ref # 4) | 92093-004 | 1 |
| HOLDER DUST SHIELD (Ref # 5) | 33035-001 | 1 |
| GREASE NIPPLE (Ref # 6) | 92005-002 | 1 |
| ADJUSTER CHAIN R.H (Ref # 7) | 33040-022 | 1 |
| ADJUSTER CHAIN R.H (Ref # 7) | 33040-033 | 1 |
| ADJUSTER SET-CHAIN,L (Ref # 8) | 33043-001 | 1 |
| ADJUSTER CHAIN L.H (Ref # 8) | 33040-032 | 1 |
| BOLT CHAIN ADJUST (Ref # 9) | 92001-009 | 1 |
| BOLT,8X50 (Ref # 9) | 92001-1399 | 1 |
| NUT 6MM (Ref # 10) | 312B0600 | 1 |
| NUT 8MM (Ref # 10) | 312B0800 | 1 |
| NUT,14MM (Ref # 11) | 314B1400 | 1 |
| NUT 14MM (Ref # 12) | 315B1400 | 1 |
| WASHER PLAIN 14MM (Ref # 13) | 410B1400 | 1 |
| UNAVAILABLE IN PRICE BOOK (Ref # 14) | 45015-002-10 | 1 |
| UNAVAILABLE IN PRICE BOOK (Ref # 14) | 45015-002-24 | 1 |
| SHOCK ABSBR-RR,C.BLUE (Ref # 14) | 45015-002-27 | 1 |
| WASHER-PL-10.5X26X2.3 (Ref # 16) | 92022-044 | 1 |
| NUT SHOCK ABSORBER (Ref # 17) | 92020-003 | 1 |
| BUSH SHCK ABS PVT SFT (Ref # 18) | 45016-003 | 1 |
| BUSH SHCK ABS RUBBER (Ref # 19) | 45017-001 | 1 |
| BOLT HEX HEAD 10X35 (Ref # 20) | 113N1035 | 1 |
| NUT,10MM (Ref # 21) | 314B1000 | 1 |
| WASHER SPRING 10MM (Ref # 22) | 461F1000 | 1 |
| WASHER PLAIN 10MM (Ref # 23) | 411B1000 | 1 |

1967 Avenger PARTS LIST

SWING ARM/SHOCK ABSORBERS A1-A7SS

| ITEM NAME | PART NUMBER | QUANTITY |
|--------------------------------|-------------|----------|
| SHOCK ABSORBER REAR (Ref # 24) | 45014-024 | 1 |