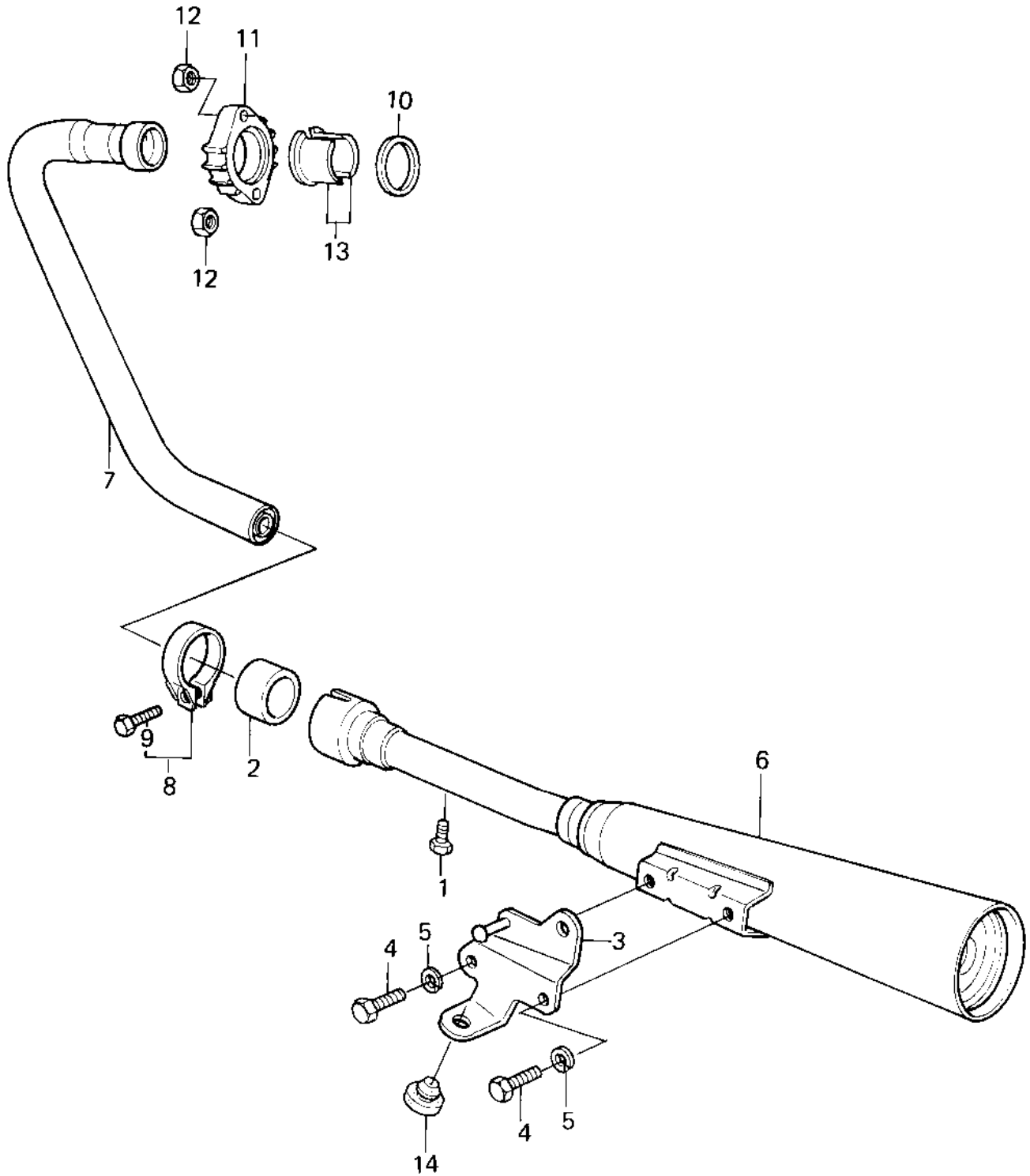


# 1980 KZ250 PARTS DIAGRAM

MUFFLER ('80 D1)



# 1980 KZ250 PARTS LIST

## MUFFLER ('80 D1)

ITEM NAME	PART NUMBER	QUANTITY
BOLT (6X10) (Ref # 1)	110R0610	1
GASKET,MANIFOLD EXHAU (Ref # 2)	11060-1068	1
BRACKET,MUFFLER (Ref # 3)	11034-1662	1
BOLT 8X12 (Ref # 4)	110N0812	2
WASHER SPRING 8MM (Ref # 5)	461F0800	2
BODY-COMP-MUFFLER (Ref # 6)	18002-1448	1
PIPE-EXHAUST (Ref # 7)	18049-1387	1
CLAMP (Ref # 8)	92037-1226	1
BOLT,8X30 (Ref # 9)	92001-1379	1
GASKET,EXHAUST PIPE H (Ref # 10)	11009-1866	1
HOLDER EXHAUST PIPE (Ref # 11)	18069-1014	1
NUT-8MM (Ref # 12)	92015-1143	2
COLLAR,EXHAUST PIPE (Ref # 13)	92027-264	2
DAMPER RUBB MAIN STAD (Ref # 14)	92075-015	1