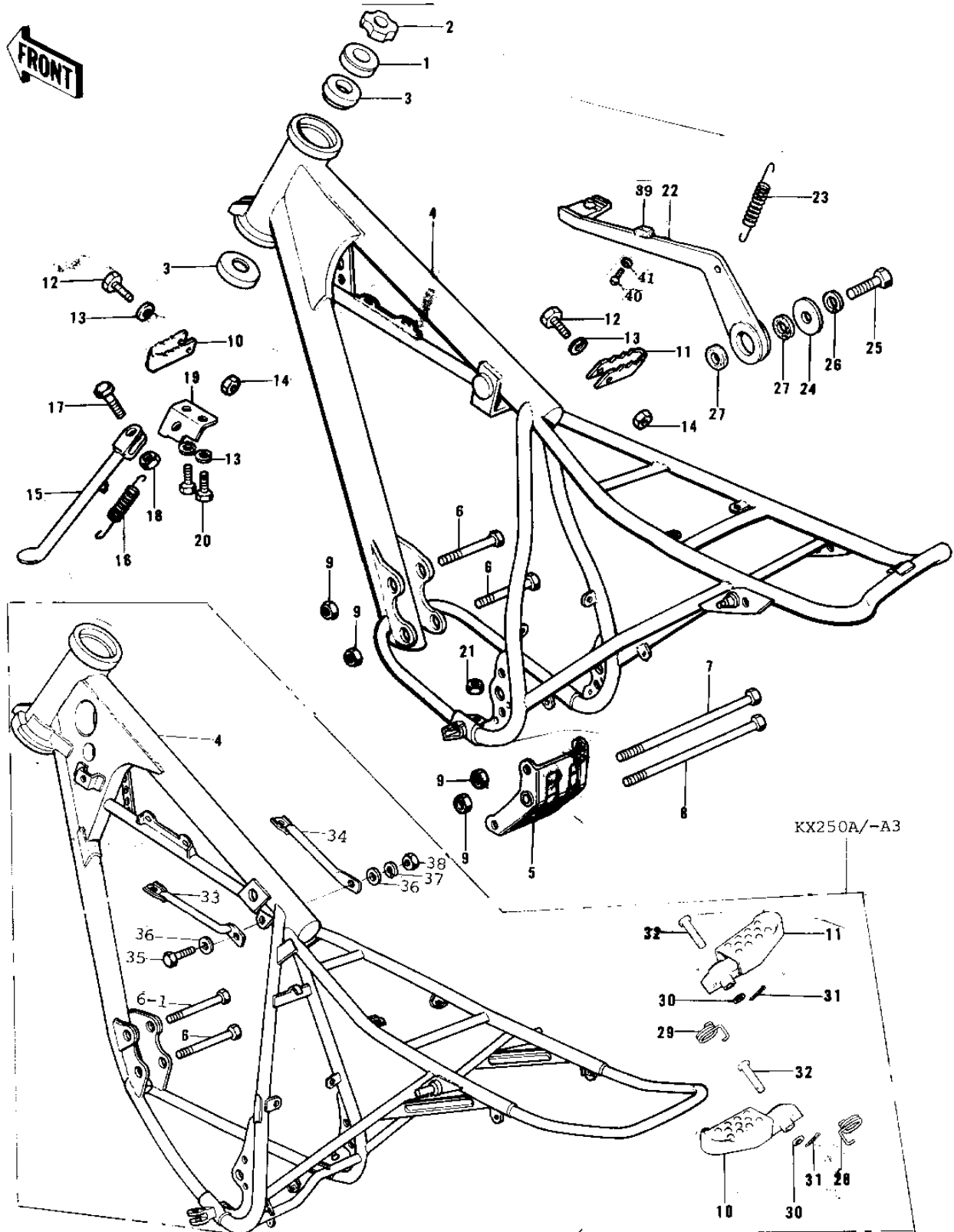


1976 KX250-A3 PARTS DIAGRAM

FRAME/FRAME FITTINGS (74-76)



1976 KX250-A3 PARTS LIST

FRAME/FRAME FITTINGS (74-76)

ITEM NAME	PART NUMBER	QUANTITY
CAP,STEERING STEM (Ref # 1)	46098-015	
NUT (Ref # 2)	92015-1546	
BEARING,STEERING STEM (Ref # 3)	92047-017	
FRAME (Ref # 4)	32002-083	
FRAME (Ref # 4)	32002-120	
BRACKET,ENGINE BASE (Ref # 5)	32117-005	
BOLT,HEX HEAD,10X65 (Ref # 6)	92001-1255	
BOLT,FLANGED,10X70 (Ref # 6-1)	92001-1618	
BOLT, FLANGED, 10X110 (Ref # 7)	92001-1602	
BOLT,FLANGED,10X115 (Ref # 8)	92001-1603	
NUT,10MM (Ref # 9)	92019-016	
BAR,L.H FOOTREST (Ref # 10)	34028-017	
BAR,FOOTREST,L.H (Ref # 10)	34028-025	
BAR,R.H FOOTREST (Ref # 11)	34028-018	
BAR,FOOTREST,R.H (Ref # 11)	34028-026	
BOLT-SMALL-UPSET (Ref # 12)	115B0832	
WASHER SPRING 8MM (Ref # 13)	461F0800	
NUT,8MM (Ref # 14)	92019-018	
STAND-SIDE (Ref # 15)	34024-045	
SPRING-SIDE STAND (Ref # 16)	34025-004	
SPRING,SIDE STAND (Ref # 16)	34025-008	
BOLT,10X28 (Ref # 17)	113G1028	
NUT 10MM (Ref # 18)	315B1000	
BRACKET,SIDE STAND (Ref # 19)	34008-009	
BRACKET,SIDE STAND (Ref # 19)	34008-009	
BOLT,8X20 (Ref # 20)	115G0820	
BOLT,8X20 (Ref # 20)	115G0820	
BOLT-SMALL-UPSET,8X22 (Ref # 20)	115B0822	
NUT 8MM (Ref # 21)	312B0800	

1976 KX250-A3 PARTS LIST

FRAME/FRAME FITTINGS (74-76)

ITEM NAME	PART NUMBER	QUANTITY
PEDAL,BRAKE (Ref # 22)	43077-005	
PEDAL,BRAKE (Ref # 22)	43077-005	
SPRING,BRAKE PEDAL (Ref # 23)	43005-026	
SPRING,BRAKE PEDAL (Ref # 23)	43005-035	
WASHER,PLAIN,6MM (Ref # 24)	92022-284	
BOLT-UPSET 6X14 (Ref # 25)	112B0614	
BOLT-UPSET 6X14 (Ref # 25)	112B0614	
WASHER SPRING 6MM (Ref # 26)	461F0600	
"O" RING,16MM (Ref # 27)	670B2016	
SPRING,L.H,FOOTREST (Ref # 28)	92081-1254	
SPRING,R.H,FOOTREST (Ref # 29)	92081-1255	
WASHER PLAIN 8MM (Ref # 30)	410B0800	
PIN,COTTER,2.5X15 (Ref # 31)	550D2515	
PIN,FOOTREST BAR FIT (Ref # 32)	92043-115	
PLATE,L.H,ENGINE (Ref # 33)	32030-057	
PLATE,RH ENGINE (Ref # 34)	32030-058	
BOLT,10X28 (Ref # 35)	113G1028	
WASHER PLAIN 10MM (Ref # 36)	411B1000	
WASHER SPRING 10MM (Ref # 37)	461F1000	
NUT,10MM (Ref # 38)	314B1000	
NUT,10MM (Ref # 38)	314B1000	
DAMPER RUBBER BRK PED (Ref # 39)	92075-267	
SCREW PAN HEAD 5X10 (Ref # 40)	220B0510	
WASHER SPRING 5MM (Ref # 41)	461F0500	