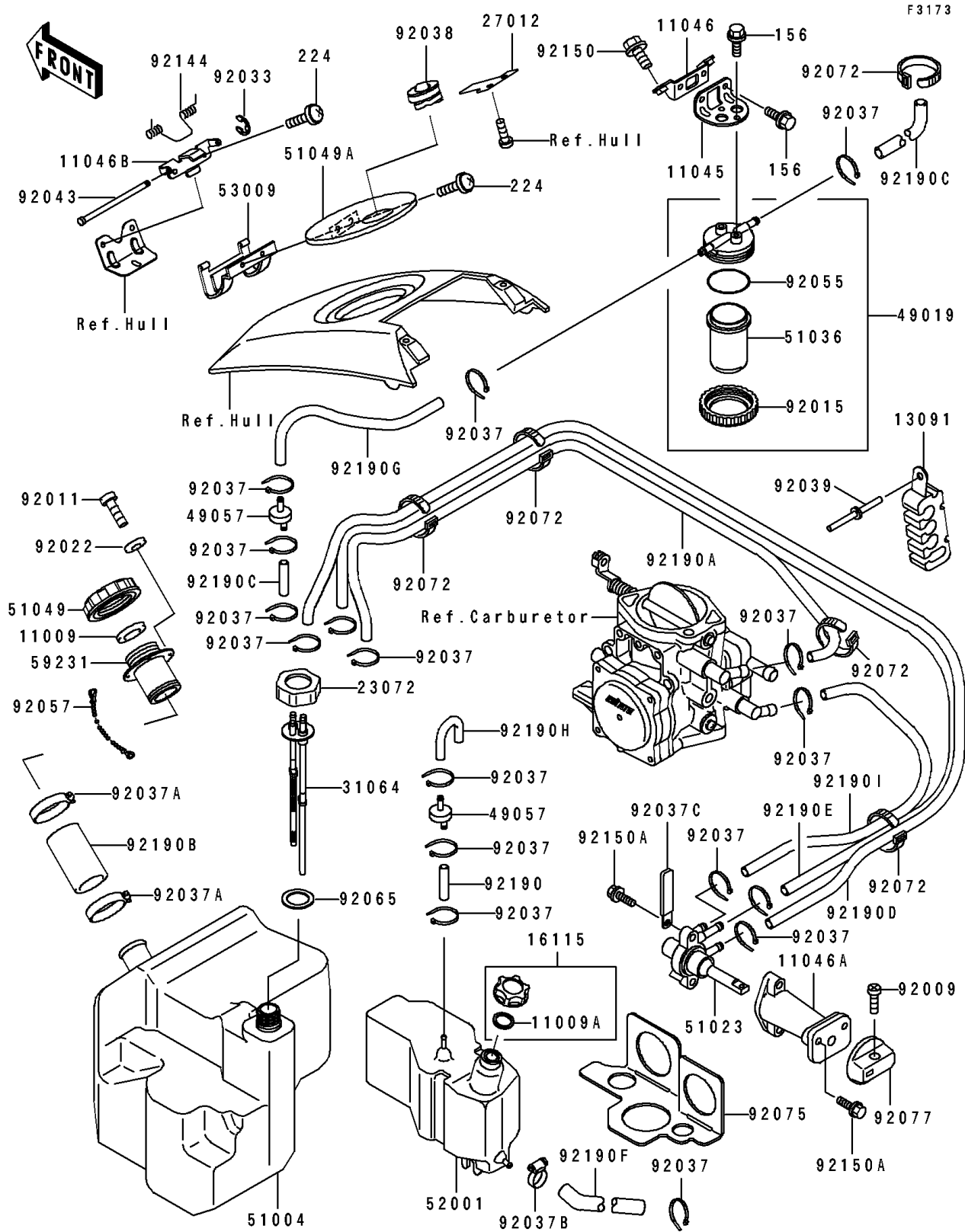


1991 650 SX PARTS DIAGRAM

Fuel Tank



1991 650 SX PARTS LIST

Fuel Tank

ITEM NAME	PART NUMBER	QUANTITY
GASKET,TANK CAP (Ref # 11009)	11009-3020	1
GASKET,OIL FILLER CAP (Ref # 11009A)	11009-3736	1
BRACKET,STRAINER (Ref # 11045)	11045-3735	1
BRACKET,STRAINER (Ref # 11046)	11046-3706	1
BRACKET,FUEL TAP (Ref # 11046A)	11046-3828	1
BRACKET,HINGE (Ref # 11046B)	11046-3837	1
HOLDER (Ref # 13091)	13091-3715	3
CAP-OIL FILLER (Ref # 16115)	16115-3704	1
RETAINER (Ref # 23072)	23072-501	1
HOOK (Ref # 27012)	27012-3721	1
PIPE-COMP,FUEL (Ref # 31064)	31064-3720	1
FILTER-FUEL (Ref # 49019)	49019-3706	1
VALVE-RELIEF (Ref # 49057)	49057-3001	2
TANK-FUEL (Ref # 51004)	51004-3705	1
TAP-ASSY,FUEL (Ref # 51023)	51023-3713	1
CUP,FUEL FILTER (Ref # 51036)	51036-3702	1
CAP-TANK (Ref # 51049)	51049-3001	1
CAP-TANK,M.M.BLUE (Ref # 51049A)	51049-3711-TA	1
TANK-OIL (Ref # 52001)	52001-3705	1
HINGE (Ref # 53009)	53009-3706	1
FILLER,FUEL TANK (Ref # 59231)	59231-3001	1
SCREW,4X8 (Ref # 92009)	92009-3729	1
SCREW (Ref # 92011)	92011-562	4
NUT,RING (Ref # 92015)	92015-3013	1
WASHER (Ref # 92022)	92022-563	4
RING-SNAP,2MM (Ref # 92033)	92033-3711	1
CLAMP (Ref # 92037)	92037-1173	17
CLAMP (Ref # 92037A)	92037-3009	2
CLAMP (Ref # 92037B)	92037-3726	1

1991 650 SX PARTS LIST

Fuel Tank

ITEM NAME	PART NUMBER	QUANTITY
CLAMP,L=100 (Ref # 92037C)	92037-3736	1
KEY (Ref # 92038)	92038-3704	1
RIVET (Ref # 92039)	92039-3714	3
PIN (Ref # 92043)	92043-3713	1
RING-O,FILTER CUP (Ref # 92055)	92055-3006	1
CHAIN,COVER,L=100 (Ref # 92057)	92057-3704	1
GASKET (Ref # 92065)	92065-504	1
BAND,L=123 (Ref # 92072)	92072-030	5
DAMPER (Ref # 92075)	92075-3740	1
KNOB (Ref # 92077)	92077-3709	1
SPRING (Ref # 92144)	92144-3710	1
BOLT,5X14 (Ref # 92150)	92150-3702	2
BOLT,5X16 (Ref # 92150A)	92150-3778	4
TUBE,5.8X10.8X55 (Ref # 92190)	92190-3765	2
TUBE,"RETURN",7X12X920 (Ref # 92190A)	92190-3855	1
TUBE,45X53X115 (Ref # 92190B)	92190-3856	1
TUBE,5.8X10.8X1100 (Ref # 92190C)	92190-3857	1
TUBE,"ON",5.8X10.8X1050 (Ref # 92190D)	92190-3858	1
TUBE,"RES",5.8X10.8X1050 (Ref # 92190E)	92190-3859	1
TUBE,TANK-PUMP (Ref # 92190F)	92190-3860	1
TUBE,FUEL AIR VENT (Ref # 92190G)	92190-3861	1
TUBE (Ref # 92190H)	92190-3866	1
TUBE,5.8X10.8X310 (Ref # 92190I)	92190-3876	1
BOLT-WP,6X12 (Ref # 156)	156R0612	4
SCREW-PAN-WP-CROS,5X12 (Ref # 224)	224R0512	4