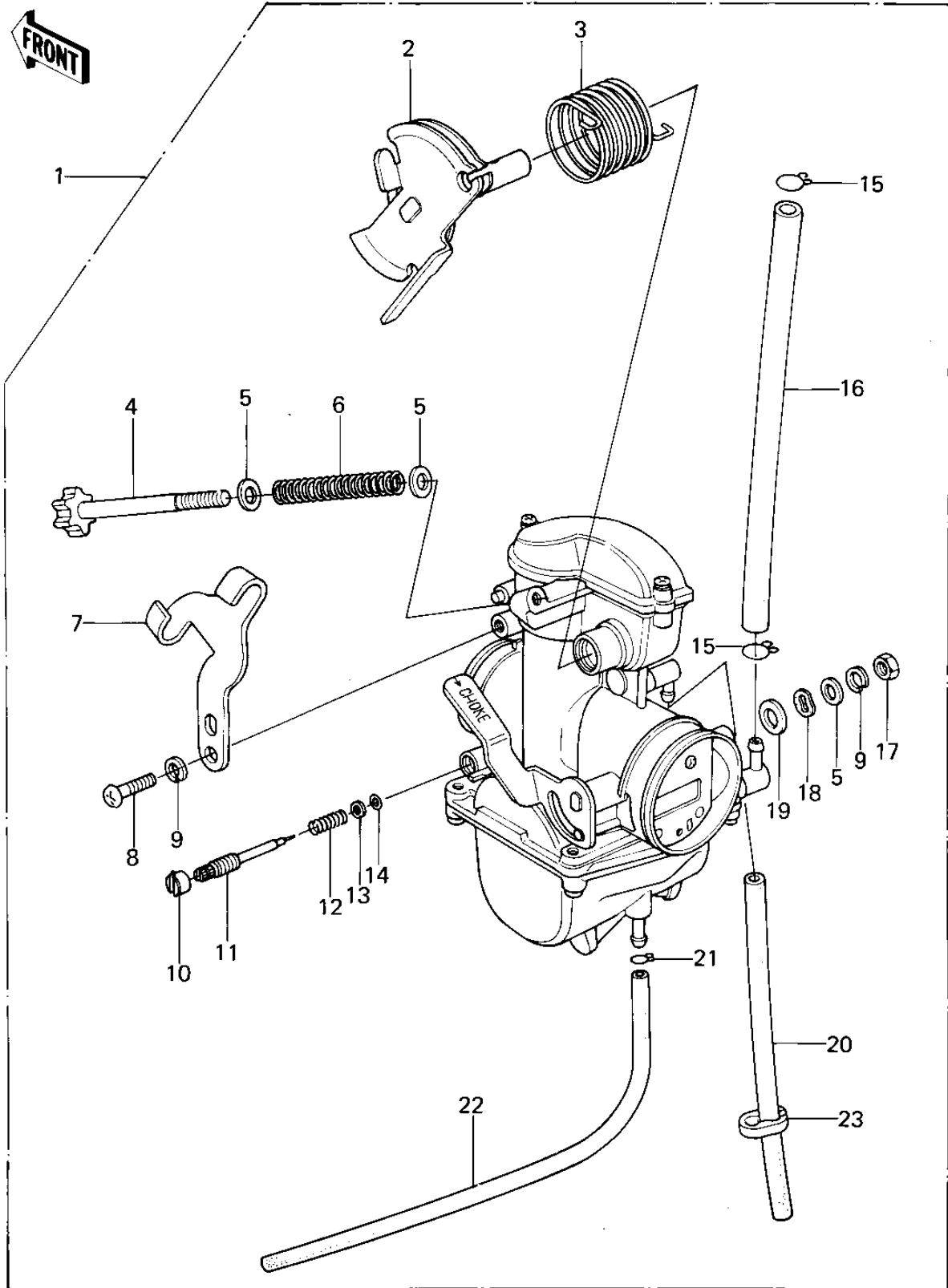


1978 KLR250 PARTS DIAGRAM

CARBURETOR ASSY ('78-'79 KL250-A1/A1A/A2)



1978 KLR250 PARTS LIST

CARBURETOR ASSY ('78-'79 KL250-A1/A1A/A2)

ITEM NAME	PART NUMBER	QUANTITY
CARBURETOR ASSY (Ref # 1)	16001-1148	2
CARBURETOR,RH,OUTSIDE (Ref # 1)	16001-1405	1
SHAFT,THROTTLE (Ref # 2)	16041-1001	1
SHAFT,THROTTLE (Ref # 2)	16041-1002	1
SPRING (Ref # 3)	92081-1056	1
SCREW,THROTTLE STOP (Ref # 4)	16021-1001	1
WASHER PLAIN 5MM (Ref # 5)	410B0500	1
SPRING,THR.STOP SCREW (Ref # 6)	92081-1005	1
PLATE,STAY (Ref # 7)	13169-1095	1
SCREW-PAN-CROS (Ref # 8)	220B0514	1
WASHER SPRING 5MM (Ref # 9)	461F0500	1
CAP,JET NEEDLE (Ref # 10)	11012-3727	1
SCREW,PILOT ADJUST (Ref # 11)	16014-1011	1
SPRING,PIROT ADJ SCRW (Ref # 12)	92081-1002	1
WASHER,PLAIN (Ref # 13)	92022-1003	1
O RING,PILOT ADJ (Ref # 14)	92055-1002	1
CLAMP,FUEL HOSE (Ref # 15)	92037-1040	1
HOSE,FUEL INLET (Ref # 16)	92059-1001	1
NUT,5MM (Ref # 17)	311B0500	1
WASHER,SPRING (Ref # 18)	92022-1055	1
WASHER PLAIN 6MM (Ref # 19)	410B0600	1
HOSE (Ref # 20)	92059-110	1
CLAMP,TUBE,OVERFLOW (Ref # 21)	92037-1142	1
HOSE,FUEL OVERFLOW (Ref # 22)	92059-1046	1
CLAMP,OVERFLOW (Ref # 23)	92037-1067	1