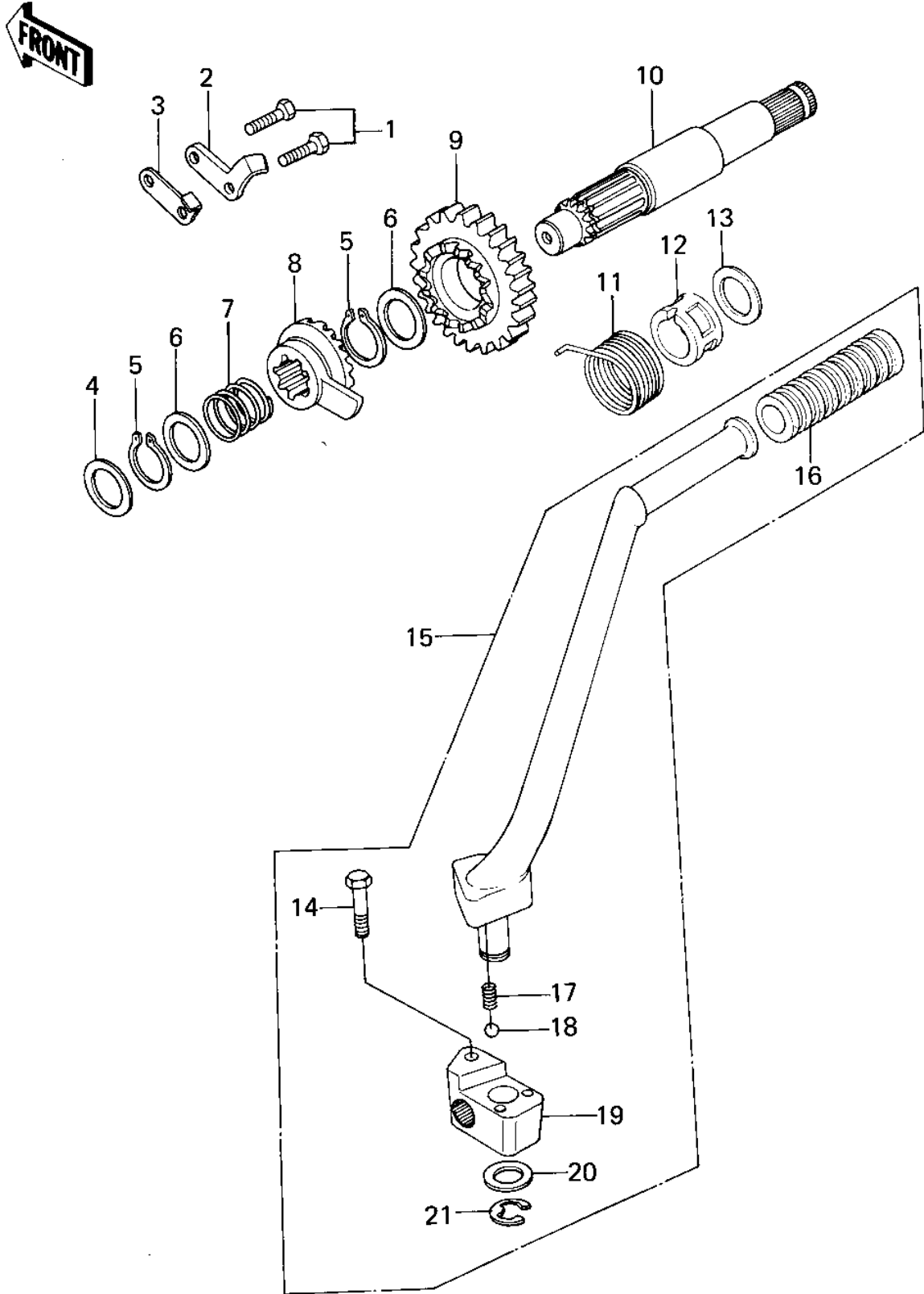


1979 KLR250 PARTS DIAGRAM

KICKSTARTER MECHANISM ('78-'79 KL250-A1/



1979 KLR250 PARTS LIST

KICKSTARTER MECHANISM ('78-'79 KL250-A1/

| ITEM NAME | PART NUMBER | QUANTITY |
|----------------------------------|-------------|----------|
| BOLT-UPSET (Ref # 1) | 112G0618 | 2 |
| GUIDE,KICK RATCHET (Ref # 2) | 13206-1004 | 1 |
| STOPPER,KICKSTARTER (Ref # 3) | 13072-017 | 1 |
| WASHER,PLAIN (Ref # 4) | 92022-269 | 1 |
| CIRCLIP 16MM (Ref # 5) | 480J1600 | 2 |
| WASHER,PLAIN (Ref # 6) | 92022-315 | 2 |
| SPRING,RATCHET (Ref # 7) | 92081-122 | 1 |
| RATCHET,KL250-D2 (Ref # 8) | 13078-1052 | 1 |
| GEAR, KICKSTARTER (Ref # 9) | 13068-034 | 1 |
| SHAFT,KICKSTARTER (Ref # 10) | 13066-044 | 1 |
| SPRING-KICKSTARTER (Ref # 11) | 92082-003 | 1 |
| GUID,KICKSTARTER SPRG (Ref # 12) | 13070-011 | 1 |
| WASHER THRUST (Ref # 13) | 92022-118 | 1 |
| BOLT HEX HEAD 8X32 (Ref # 14) | 114G0832 | 1 |
| PEDAL ASSY,KICKSTARTR (Ref # 15) | 13064-1020 | 1 |
| RUBBER KICK PEDAL (Ref # 16) | 13063-004 | 1 |
| SPRING (Ref # 17) | 92081-154 | 1 |
| BALL STEEL 1/4' (Ref # 18) | 600A0800 | 1 |
| BOSS,KICK PEDAL (Ref # 19) | 13061-031 | 1 |
| WASHER,PLAIN (Ref # 20) | 92022-1019 | 1 |
| CIR CLIP (Ref # 21) | 482K0100 | 1 |