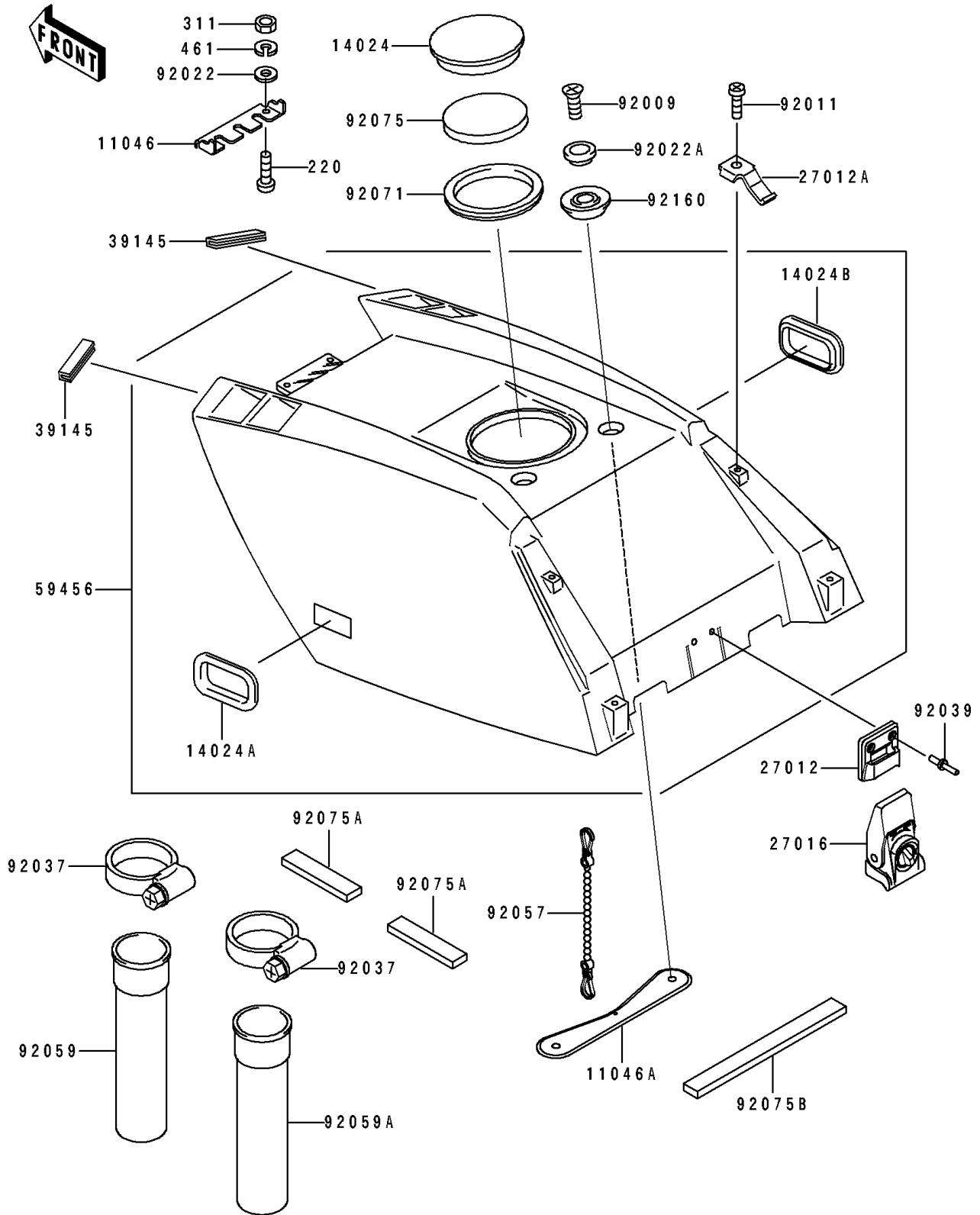


# 1993 650 SX PARTS DIAGRAM

Engine Hood

F3142



# 1993 650 SX PARTS LIST

## Engine Hood

| ITEM NAME                              | PART NUMBER   | QUANTITY |
|--|---------------|----------|
| BRACKET (Ref # 11046)                  | 11046-3703    | 1        |
| BRACKET (Ref # 11046A)                 | 11046-3748    | 1        |
| COVER (Ref # 14024)                    | 14024-3748    | 1        |
| COVER,LH,J.WHITE (Ref # 14024A)        | 14024-3771-8U | 1        |
| COVER,RH,J.WHITE (Ref # 14024B)        | 14024-3772-8U | 1        |
| HOOK (Ref # 27012)                     | 27012-3711    | 1        |
| HOOK,FOR PAD (Ref # 27012A)            | 27012-3716    | 2        |
| LOCK-ASSY (Ref # 27016)                | 27016-3703    | 1        |
| TRIM-SEAL (Ref # 39145)                | 39145-3708    | 2        |
| HOOD-COMP-ENGINE,J.WHITE (Ref # 59456) | 59456-3714-8C | 1        |
| SCREW,6X25 (Ref # 92009)               | 92009-3717    | 2        |
| SCREW,TAPPING (Ref # 92011)            | 92011-561     | 2        |
| WASHER,5X16X1.5 (Ref # 92022)          | 92022-3041    | 2        |
| WASHER (Ref # 92022A)                  | 92022-3732    | 2        |
| CLAMP (Ref # 92037)                    | 92037-3738    | 2        |
| RIVET (Ref # 92039)                    | 92039-3722    | 2        |
| CHAIN,COVER,L=100 (Ref # 92057)        | 92057-3704    | 1        |
| TUBE (Ref # 92059)                     | 92059-3803    | 1        |
| TUBE (Ref # 92059A)                    | 92059-3815    | 1        |
| GROMMET (Ref # 92071)                  | 92071-3742    | 1        |
| DAMPER (Ref # 92075)                   | 92075-3737    | 1        |
| DAMPER,DUCT,RR,LH (Ref # 92075A)       | 92075-3744    | 4        |
| DAMPER,DUCT,REAR (Ref # 92075B)        | 92075-3746    | 1        |
| DAMPER (Ref # 92160)                   | 92160-3709    | 2        |
| SCREW-PAN-CROS,5X20 (Ref # 220)        | 220R0520      | 2        |
| NUT-HEX,5MM (Ref # 311)                | 311R0500      | 2        |
| WASHER-SPRING,5MM (Ref # 461)          | 461S0500      | 2        |