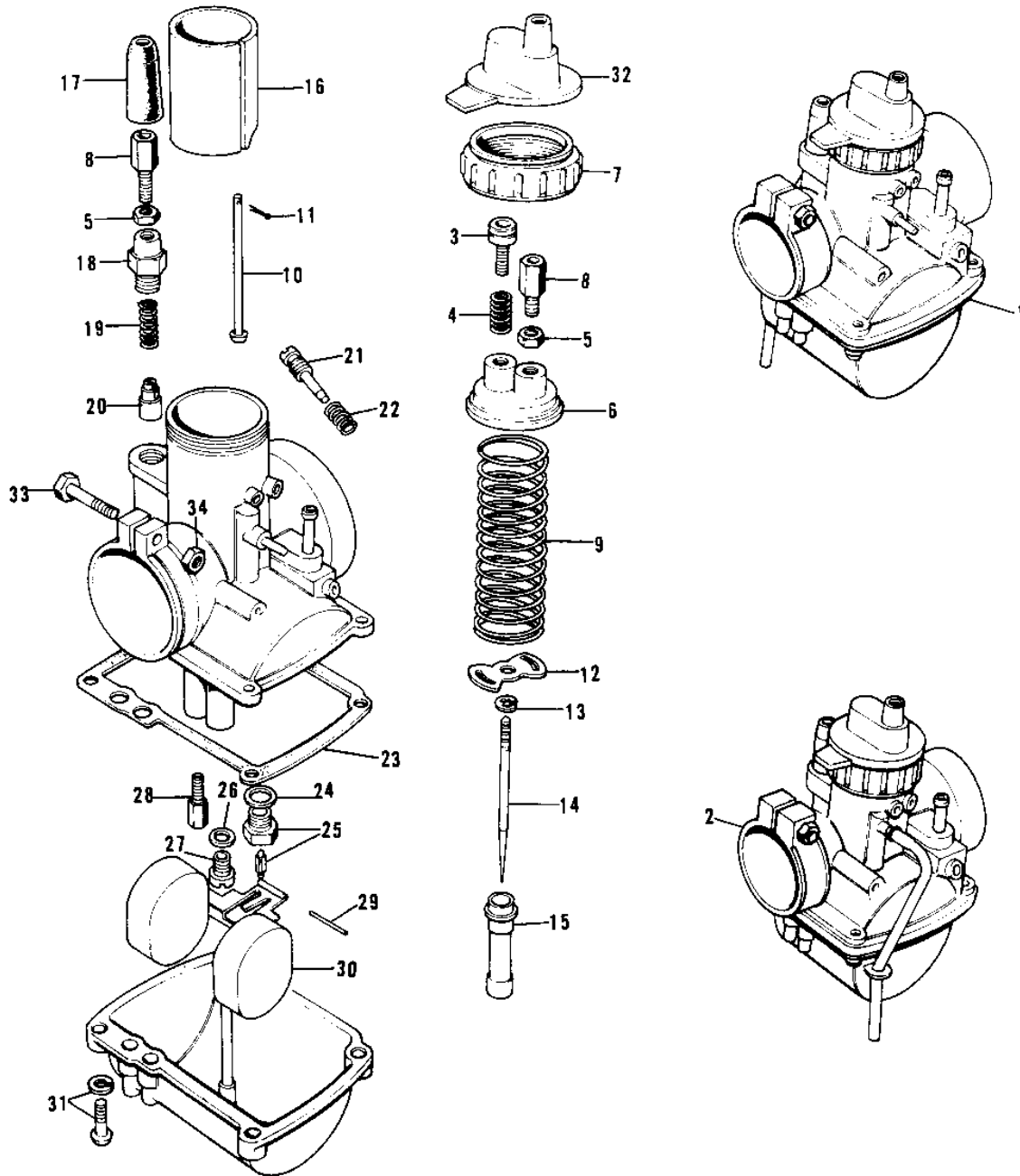


1974 Mach I PARTS DIAGRAM

CARBURETORS



1974 Mach I PARTS LIST

CARBURETORS

| ITEM NAME | PART NUMBER | QUANTITY |
|----------------------------------|-------------|----------|
| CARBURETOR ASSY,L.H (Ref # 1) | 16001-177 | |
| CARBURETOR ASSY,L.H (Ref # 1) | 16001-235 | |
| CARBURETOR ASY,RH&CNT (Ref # 2) | 16001-178 | |
| CARBURETOR ASY,R.H&CN (Ref # 2) | 16001-236 | |
| SCREW,THROTTLE ADJSTR (Ref # 3) | 16021-016 | |
| SPRING THR STOP SCREW (Ref # 4) | 16022-005 | |
| NUT CABLE ADJUST LOCK (Ref # 5) | 16003-004 | |
| TOP MIXING CHAMBER (Ref # 6) | 16005-005 | |
| CAP,MIXING CHAMBER (Ref # 7) | 16004-019 | |
| CABLE ADJUSTER (Ref # 8) | 16002-002 | |
| SPRING,THROTTLE VALVE (Ref # 9) | 16006-019 | |
| ROD,THROTTLE VLV STP (Ref # 10) | 16024-012 | |
| PIN COTTER 1.2X10 (Ref # 11) | 550D1210 | |
| SPRING SEAT THRTL VLV (Ref # 12) | 16007-002 | |
| CIRCLIP (Ref # 13) | 16008-010 | |
| JET NEEDLE 4EJ9 (Ref # 14) | 16009-057 | |
| NEEDLE JET,O-2 (Ref # 15) | 16017-066 | |
| VALVE,THROTTLE CA.2.5 (Ref # 16) | 16025-054 | |
| CAP CABLE ADJUST RUBB (Ref # 17) | 16036-005 | |
| CAP STARTER PLUNGER (Ref # 18) | 16012-004 | |
| SPRING-PLUNGER (Ref # 19) | 16013-003 | |
| PLUNGER-ENRICHNER (Ref # 20) | 16016-002 | |
| SCREW (Ref # 21) | 16014-006 | |
| SPRING-THR STOP SCREW (Ref # 22) | 16022-007 | |
| GASKET FLOAT CHAMBER (Ref # 23) | 16019-012 | |
| WASHER VALVE SEAT (Ref # 24) | 16029-002 | |
| FLOAT VALVE ASSY (Ref # 25) | 16030-001 | |
| WASHER MAIN JET (Ref # 26) | 16034-001 | |
| MAIN JET NO 75R (Ref # 27) | 92063-109 | |

1974 Mach I PARTS LIST

CARBURETORS

| ITEM NAME | PART NUMBER | QUANTITY |
|--------------------------------|-------------|----------|
| MAIN JET,#70R (Ref # 27) | 92063-1012 | |
| MAIN JET NO 72.5R (Ref # 27) | 92063-108 | |
| MAIN JET,#77.5R (Ref # 27) | 92063-1032 | |
| MAIN JET, #A80 (Ref # 27) | 92063-1030 | |
| JET-PILOT NO 20 (Ref # 28) | 92064-021 | |
| FLOAT PIN (Ref # 29) | 16032-003 | |
| FLOAT (Ref # 30) | 16031-015 | |
| SCREW-FLOAT CHAMBER (Ref # 31) | 16033-012 | |
| SCREW-FLOAT CHAMBER (Ref # 32) | 16033-012 | |
| BOOT,CARBURETOR (Ref # 32) | 49006-1021 | |
| SCREW CLAMP (Ref # 33) | 16010-004 | |
| NUT 6MM (Ref # 34) | 311B0600 | |