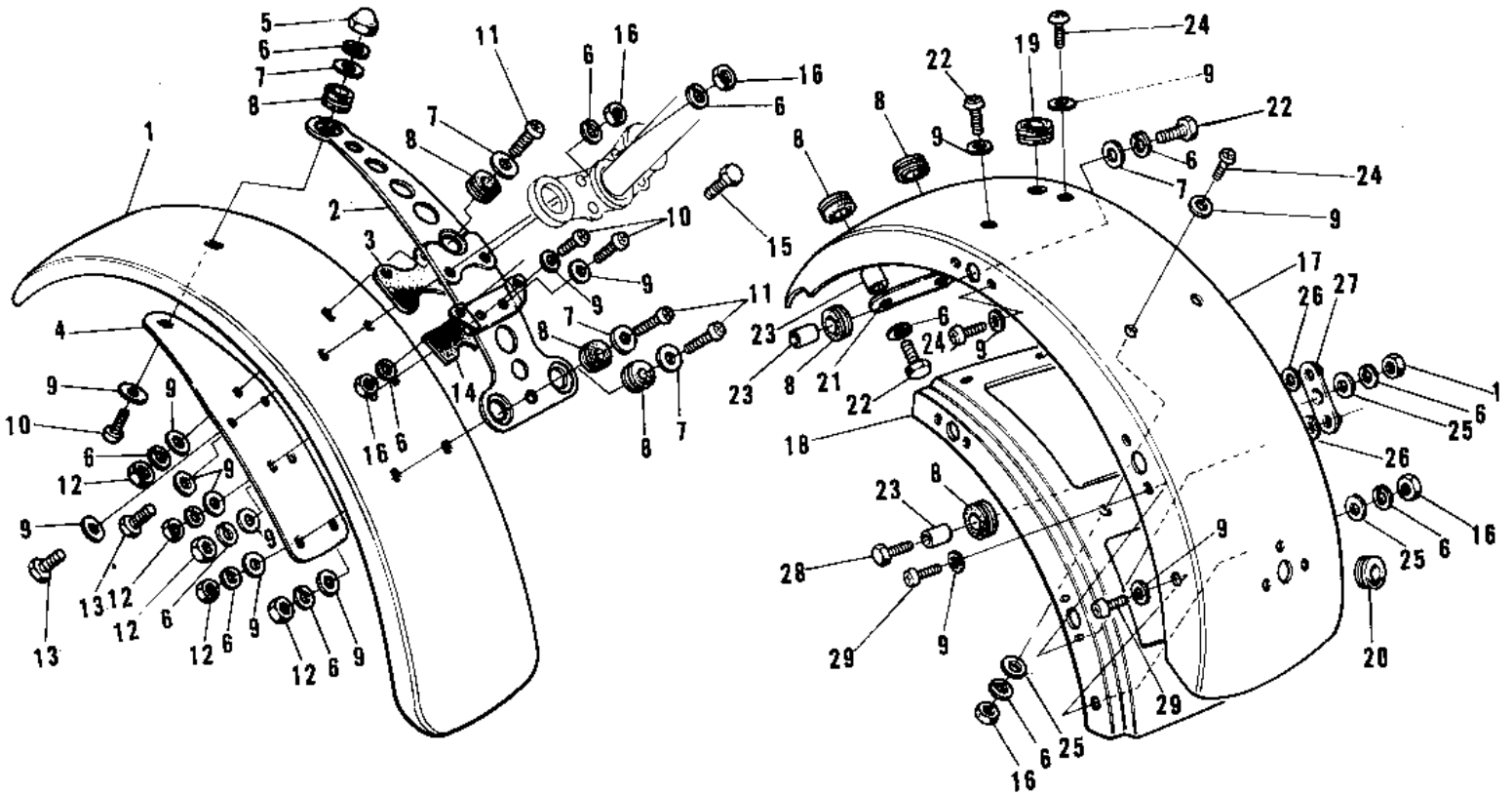


1972 F8-A PARTS DIAGRAM

FENDERS (F8-A)



1972 F8-A PARTS LIST

FENDERS (F8-A)

ITEM NAME	PART NUMBER	QUANTITY
FENDER-FR,B.ORANGE (Ref # 1)	35004-048-72	1
BRACKET-FRONT FENDER (Ref # 2)	35012-011	1
DAMPER RUBBER-F.FENDR (Ref # 3)	35007-002	1
PLATE-FRNT FENDER FIT (Ref # 4)	35013-009	1
NUT,6MM (Ref # 5)	92015-009	1
WASHER SPRING 6MM (Ref # 6)	461F0600	1
WASHER 6.5X20X1.6T (Ref # 7)	92022-125	1
DAMPER RUBBER (Ref # 8)	92075-051	1
WASHER PLAIN (Ref # 9)	92022-024	1
SCREW PAN HEAD 6X20 (Ref # 10)	220B0620	1
SCREW PAN HEAD 6X20 (Ref # 11)	220E0620	1
NUT 6MM (Ref # 12)	312B0600	1
BOLT-HEX HEAD,6X42 (Ref # 13)	92003-063	1
DAMPER RUBBER-FR FNDR (Ref # 14)	35007-003	1
BOLT-UPSET (Ref # 15)	112G0625	2
NUT 6MM (Ref # 16)	311B0600	1
FENDER-RR,B.ORANGE (Ref # 17)	35022-046-72	1
BRACE-REAR FENDER (Ref # 18)	35034-010	1
GROMMET HARNESS 10MM (Ref # 19)	92071-010	1
GROMMET HARNESS 10MM (Ref # 20)	92071-019	1
BRACE-RR FENDER,FRONT (Ref # 21)	35034-013	1
BOLT-UPSET,6X20 (Ref # 22)	112G0620	2
COLLAR (Ref # 23)	92027-103	1
SCREW PAN HEAD 6X14 (Ref # 24)	220B0614	1
WASHER PLAIN 6MM (Ref # 25)	411B0600	1
DAMPER RUBBER (Ref # 26)	92075-097	1
WASHER-PLAIN (Ref # 27)	92022-200	1
BOLT HEX HEAD 6X18 (Ref # 28)	110N0618	1
SCREW PAN HEAD 6X14 (Ref # 29)	220E0614	1