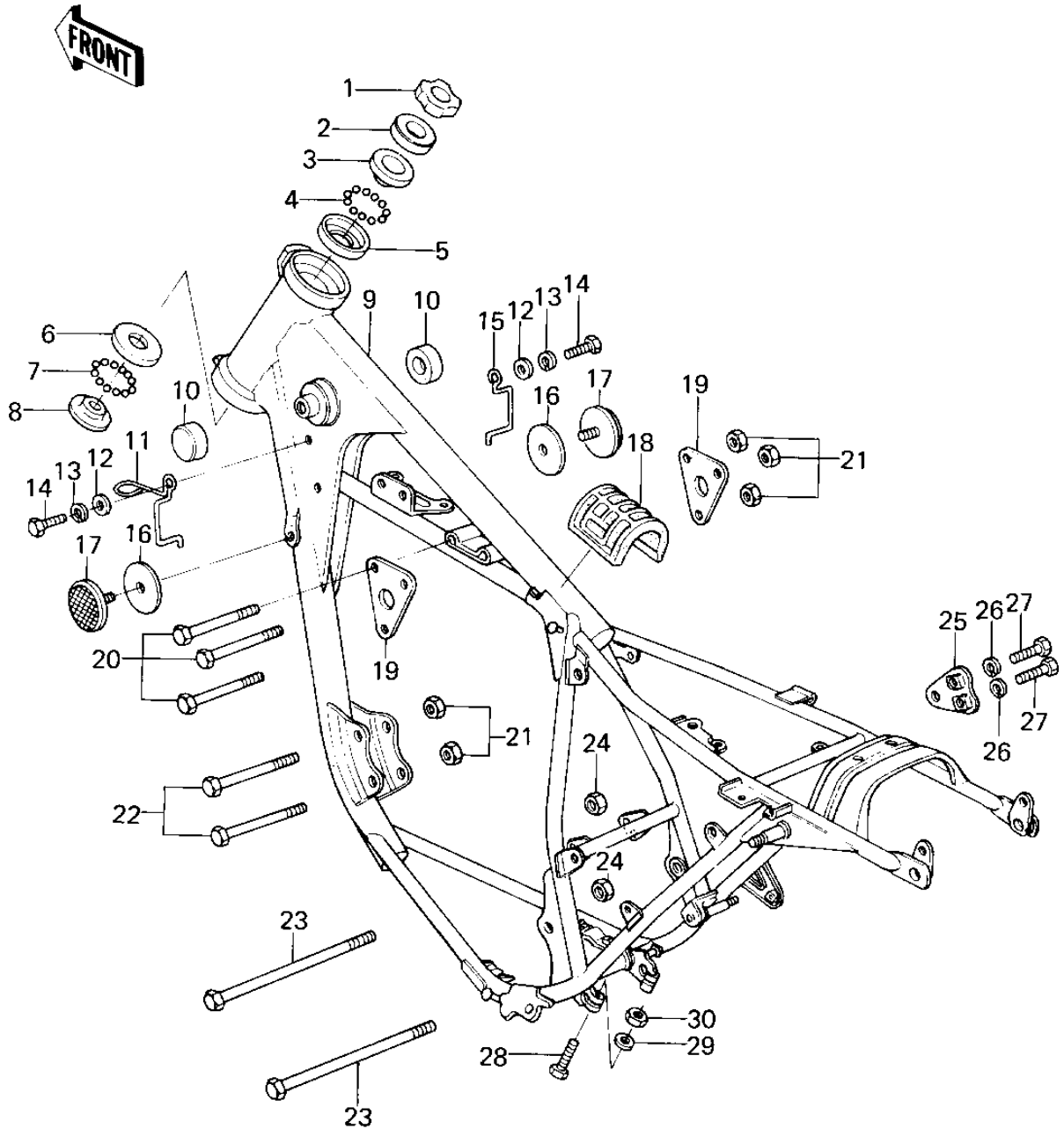


## 1978 KZ200-A1 PARTS DIAGRAM

FRAME/FRAME FITTINGS



## 1978 KZ200-A1 PARTS LIST

### FRAME/FRAME FITTINGS

ITEM NAME	PART NUMBER	QUANTITY
NUT,STEERING STEM (Ref # 1)	92090-022	1
CAP,STEERING STEM (Ref # 2)	46098-012	1
CONE,STRG STM BRG,UP (Ref # 3)	92047-014	1
BALL STEEL 3/16' (Ref # 4)	600A0600	1
RACE,STRG STM BEARING (Ref # 5)	92048-009	1
RACE STEERING BEARING (Ref # 6)	92048-005	1
BALL STEEL 1/4' (Ref # 7)	600A0800	1
CONE STERNG BERG LOW (Ref # 8)	92047-010	1
FRAME (Ref # 9)	32002-165	1
DAMPER RUBBER-FL TANK (Ref # 10)	92075-101	1
CLAMP (Ref # 11)	92037-202	1
WASHER PLAIN 6MM (Ref # 12)	411B0600	1
WASHER SPRING 6MM (Ref # 13)	461F0600	1
BOLT-UPSET,6X12 (Ref # 14)	112G0612	1
CLAMP (Ref # 15)	92037-203	1
DAMPER RUBBER,REFLECT (Ref # 16)	92094-011	1
REFLECTOR,REFLEX (Ref # 17)	28012-016	1
DAMPER RUBBER (Ref # 18)	92075-284	1
PLATE,ENGINE HEAD (Ref # 19)	32030-069	1
BOLT,FLANGED,8X60 (Ref # 20)	92001-1581	1
NUT,LOCK,8MM (Ref # 21)	92017-013	1
BOLT,HEX HEAD,8X65 (Ref # 22)	110B0865	1
BOLT, FLANGED, 10X110 (Ref # 23)	92001-1602	1
NUT,LOCK,10MM (Ref # 24)	92019-021	1
BRACKET,ENGINE (Ref # 25)	32029-1008	1
WASHER SPRING 8MM (Ref # 26)	461F0800	1
BOLT-SMALL-UPSET,8X16 (Ref # 27)	115G0816	1
BOLT 6X35 (Ref # 28)	110R0635	1
WASHER PLAIN 6MM (Ref # 29)	410B0600	1

## 1978 KZ200-A1 PARTS LIST

FRAME/FRAME FITTINGS

ITEM NAME	PART NUMBER	QUANTITY
NUT,LOCK 6MM (Ref # 30)	92017-014	1