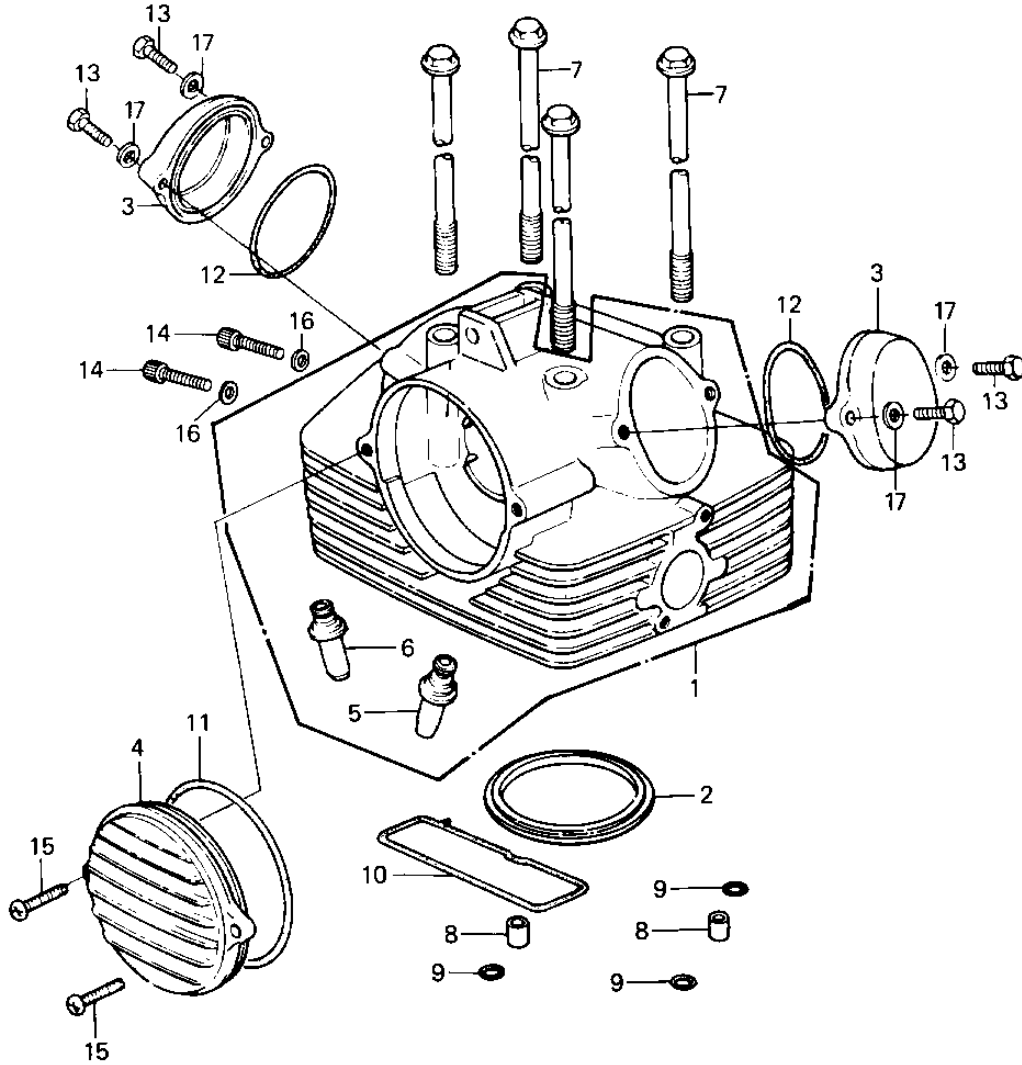


1983 Duckster PARTS DIAGRAM

CYLINDER HEAD/COVERS



1983 Duckster PARTS LIST

CYLINDER HEAD/COVERS

ITEM NAME	PART NUMBER	QUANTITY
CYLINDER HEAD (Ref # 1)	11002-5023	1
GASKET,CYLINDER HEAD (Ref # 2)	11004-1004	1
CAP,ROCKER,FLAT BLACK (Ref # 3)	11012-1078	2
COVER,CAM,FLAT BLACK (Ref # 4)	14025-1103	1
GUIDE,INLET VALVE (Ref # 5)	12013-003	1
GUIDE,EXHAUST VALVE (Ref # 6)	49002-1010	1
BOLT,8X233 (Ref # 7)	92003-220	4
PIN,DOWEL,10X8.2X14 (Ref # 8)	92043-1037	2
RING-O,10MM (Ref # 9)	92055-1149	3
"O" RING (Ref # 10)	92055-105	1
"O" RING,99M/M (Ref # 11)	92055-107	1
"O" RING,53.5MM (Ref # 12)	92055-112	2
BOLT-UPSET (Ref # 13)	112G0625	4
BOLT,SOCKET,8X30 (Ref # 14)	120P0830	2
SCREW PAN HEAD 6X25 (Ref # 15)	220B0625	2
WASHER PLAIN 8MM (Ref # 16)	410B0800	2
WASHER PLAIN 6MM (Ref # 17)	411B0600	4