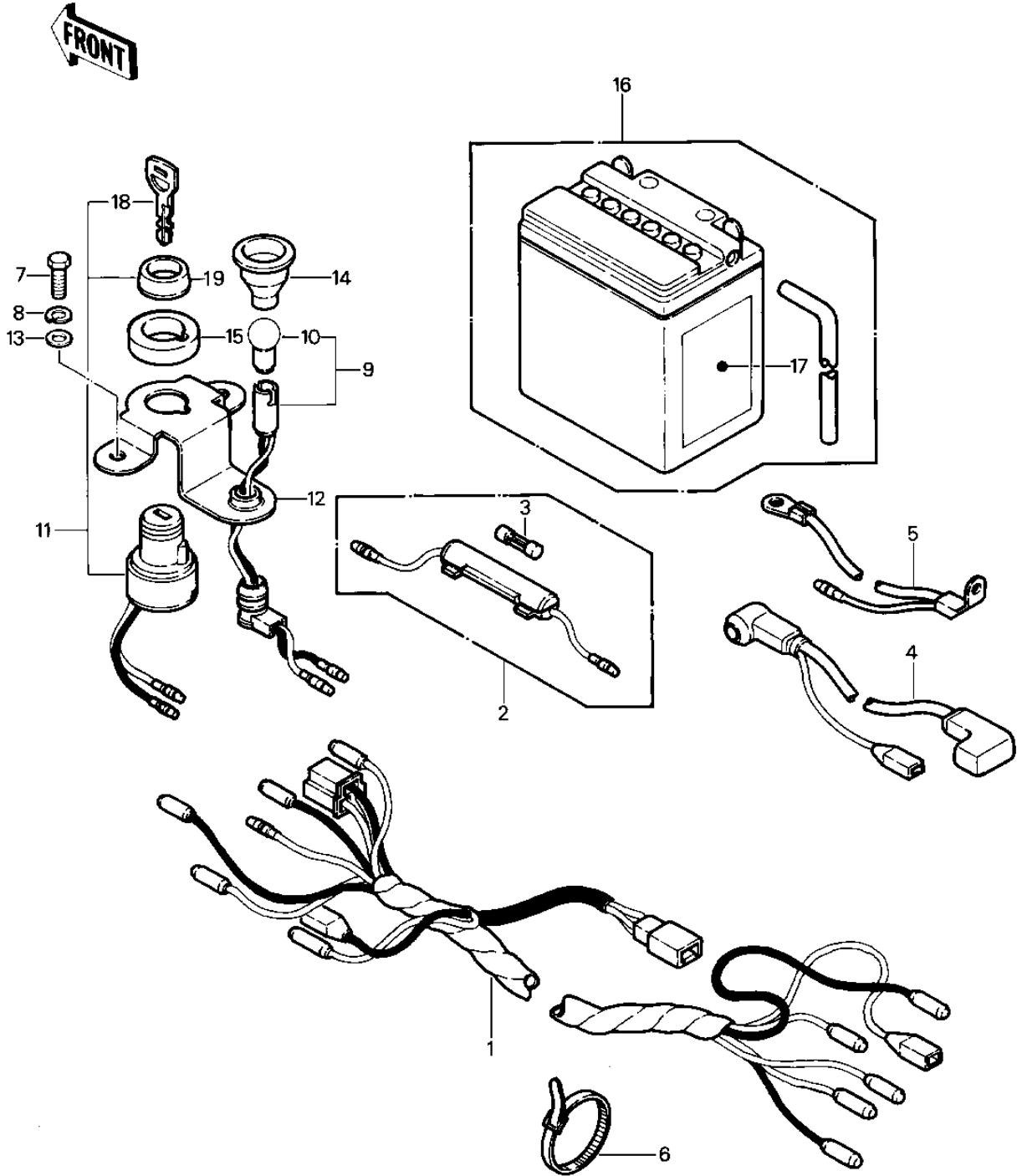


1982 KLT200 PARTS DIAGRAM

CHASSIS ELECTRICAL EQUIPMENT ('81-'82 KL



1982 KLT200 PARTS LIST

CHASSIS ELECTRICAL EQUIPMENT ('81-'82 KL

| ITEM NAME | PART NUMBER | QUANTITY |
|----------------------------------|-------------|----------|
| HARNESS,MAIN (Ref # 1) | 26001-4011 | 1 |
| FUSE ASSY (Ref # 2) | 26004-013 | 1 |
| FUSE-20A (Ref # 3) | 26006-005 | 1 |
| WIRE,MAGNETIC SWITCH (Ref # 4) | 26010-051 | 1 |
| WIRE,BATTERY GROUND (Ref # 5) | 26010-052 | 1 |
| BAND (Ref # 6) | 92072-3505 | 4 |
| BOLT-UPSET 6X14 (Ref # 7) | 112B0614 | 2 |
| WASHER SPRING 6MM (Ref # 8) | 461F0600 | 2 |
| LAMP-ASSY,IGNITION (Ref # 9) | 23016-1025 | 1 |
| BULB 12V 3W (Ref # 10) | 92069-018 | 1 |
| SWITCH-ASSY-IGNITION (Ref # 11) | 27005-1117 | 1 |
| BRKT,SWITCH (Ref # 12) | 32059-4001 | 1 |
| WASHER,6.5X16X2 (Ref # 13) | 92022-1565 | 2 |
| TUBE (Ref # 14) | 92059-1559 | 1 |
| DAMPER IGNITION SWITH (Ref # 15) | 92075-4016 | 1 |
| YUA BAT 12N10-3B (Ref # 16) | 26012-050 | 1 |
| LABEL-WARNING,BATTERY (Ref # 17) | 56040-1036 | 1 |
| KEY-LOCK,BLANK (Ref # 18) | 27008-1103 | OP |
| NUT,IGNITION SW LOCK (Ref # 19) | 27007-004 | 1 |