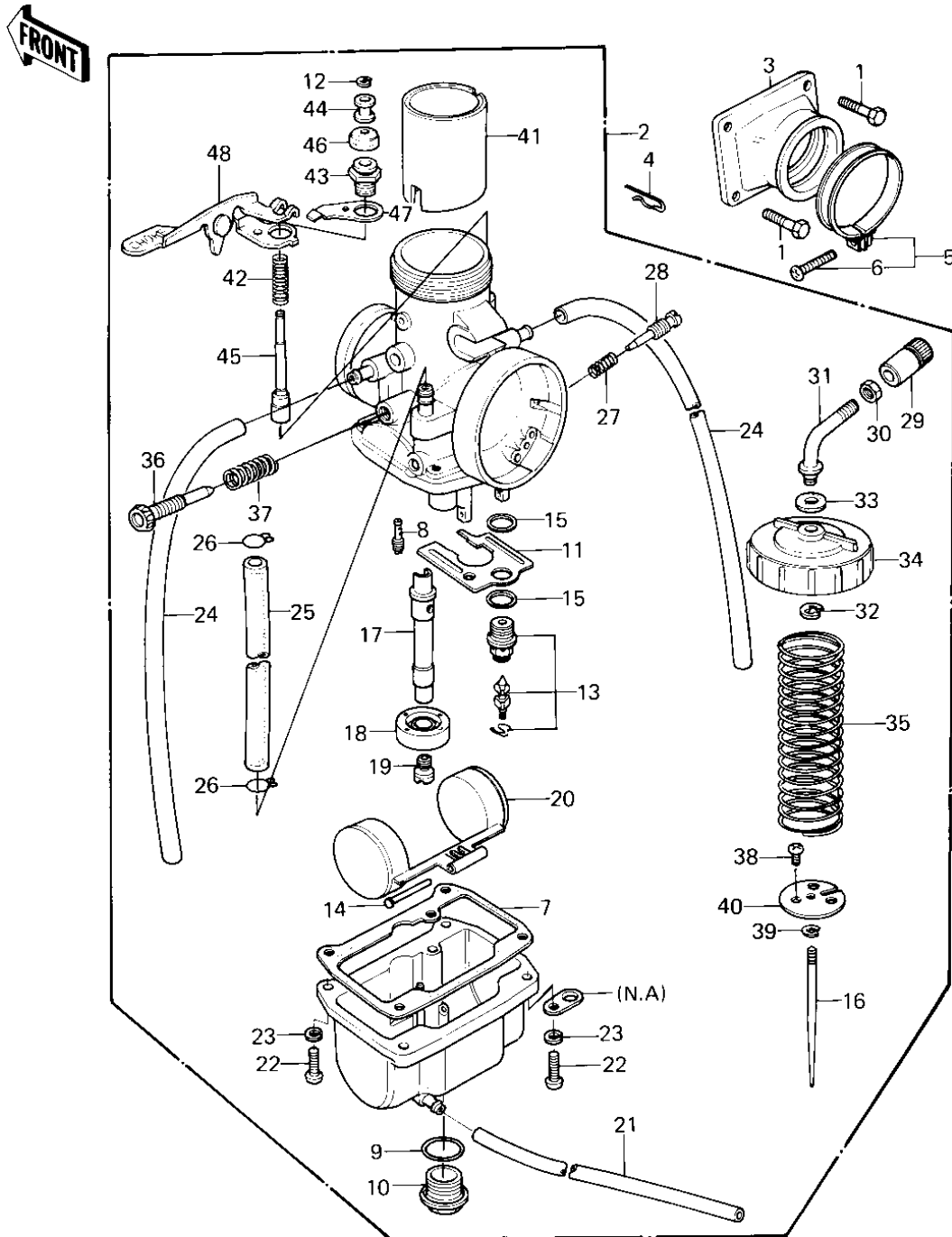


1980 KDX175 PARTS DIAGRAM CARBURETOR ('80 A1)



1980 KDX175 PARTS LIST

CARBURETOR ('80 A1)

| ITEM NAME | PART NUMBER | QUANTITY |
|---------------------------------|-------------|----------|
| BOLT-UPSET (Ref # 1) | 112G0625 | 1 |
| CARBURETOR ASSY (Ref # 2) | 16001-1250 | 1 |
| HOLDER,CARBURETOR (Ref # 3) | 16065-1007 | 1 |
| CIRCLIP (Ref # 4) | 92036-018 | 1 |
| CLAMP-INLET PIPE (Ref # 5) | 92037-061 | 1 |
| SCREW,PAN HEAD (Ref # 6) | 92011-037 | 1 |
| GASKET,FLOAT CHAMBER (Ref # 7) | 11009-1079 | 1 |
| JET-PILOT NO 40 (Ref # 8) | 92064-024 | 1 |
| GASKET-COVER (Ref # 9) | 16038-009 | 1 |
| COVER,MAIN JET (Ref # 10) | 16049-006 | 1 |
| PLATE,FLOAT CHAMBER (Ref # 11) | 11009-1080 | 1 |
| CIRCLIP (Ref # 12) | 16076-003 | 1 |
| FLOAT VALVE ASSY (Ref # 13) | 16030-022 | 1 |
| PIN,FLOAT (Ref # 14) | 16032-008 | 1 |
| GASKET,FLOAT VALVE (Ref # 15) | 11009-1076 | 1 |
| JET NEEDLE,6DH7 (Ref # 16) | 16009-1063 | 1 |
| NEEDLE JET,Q-4 (Ref # 17) | 16017-1060 | 1 |
| HOLDER,NEEDLE JET (Ref # 18) | 16065-1017 | 1 |
| MAIN JET,#A137.5 (Ref # 19) | 92063-1087 | 1 |
| JET-MAIN NO 132.5R (Ref # 19) | 92063-103 | 1 |
| MAIN JET NO 135R (Ref # 19) | 92063-104 | 1 |
| MAIN JET,#140A (Ref # 19) | 92063-116 | 1 |
| JET-MAIN NO 142.5R (Ref # 19) | 92063-117 | 1 |
| FLOAT ASSY (Ref # 20) | 16031-025 | 1 |
| HOSE,OVERFLOW (Ref # 21) | 92059-1025 | 1 |
| SCREW, PAN HEAD 5X16 (Ref # 22) | 220B0516A | 1 |
| WASHER SPRING 5MM (Ref # 23) | 461F0500 | 1 |
| TUBE,3.5X6.5X290,BRT (Ref # 24) | 92059-1017 | 1 |
| HOSE,6.5X11.5X240 (Ref # 25) | 92059-1084 | 1 |

1980 KDX175 PARTS LIST

CARBURETOR ('80 A1)

| ITEM NAME | PART NUMBER | QUANTITY |
|---------------------------------|-------------|----------|
| CLAMP,CARB CONECT HO (Ref # 26) | 92037-056 | 1 |
| SPRING-THR STOP SCRE (Ref # 27) | 16022-007 | 1 |
| SCREW (Ref # 28) | 16014-006 | 1 |
| ADJUSTER,CABLE (Ref # 29) | 16002-1006 | 1 |
| NUT CABLE ADJUST LOC (Ref # 30) | 16003-004 | 1 |
| GUIDE,CABLE (Ref # 31) | 13070-1010 | 1 |
| CIRCLIP,CABLE GUIDE (Ref # 32) | 16008-011 | 1 |
| GASKET,CABLE GUIDE (Ref # 33) | 11009-1191 | 1 |
| TOP,MIXING CHAMBER (Ref # 34) | 16004-1003 | 1 |
| SPRING-THROTTLE VALV (Ref # 35) | 16006-016 | 1 |
| SCREW,THROTTLE ADJUS (Ref # 36) | 16021-1028 | 1 |
| SPRING,THRTL STP SCR (Ref # 37) | 92081-1200 | 1 |
| SCREW,4X5 (Ref # 38) | 92009-1037 | 1 |
| CIRCLIP (Ref # 39) | 16008-010 | 1 |
| SEAT,THROTTLE VALVE (Ref # 40) | 16007-1007 | 1 |
| VALVE,THROTTLE,CA2.0 (Ref # 41) | 16025-1047 | 1 |
| SPRING,STARTER PLUG (Ref # 42) | 16013-008 | 1 |
| CAP,PLUNGER (Ref # 43) | 16012-016 | 1 |
| COLLAR (Ref # 44) | 16073-014 | 1 |
| PLUNGER ASSY,STARTER (Ref # 45) | 16016-1014 | 1 |
| CAP,STARTER PLUNGER (Ref # 46) | 16039-015 | 1 |
| SPRING,STATER LEVER (Ref # 47) | 16013-009 | 1 |
| LEVER,STARTER (Ref # 48) | 13168-1066 | 1 |